

RNAV (RNP) Z RWY 28L

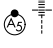
JOHN GLENN COLUMBUS INTL (CMH)

APP CRS	Rwy Ldg	10114
281°	TDZE	815
	Apt Elev	815

RNP AR APCH.

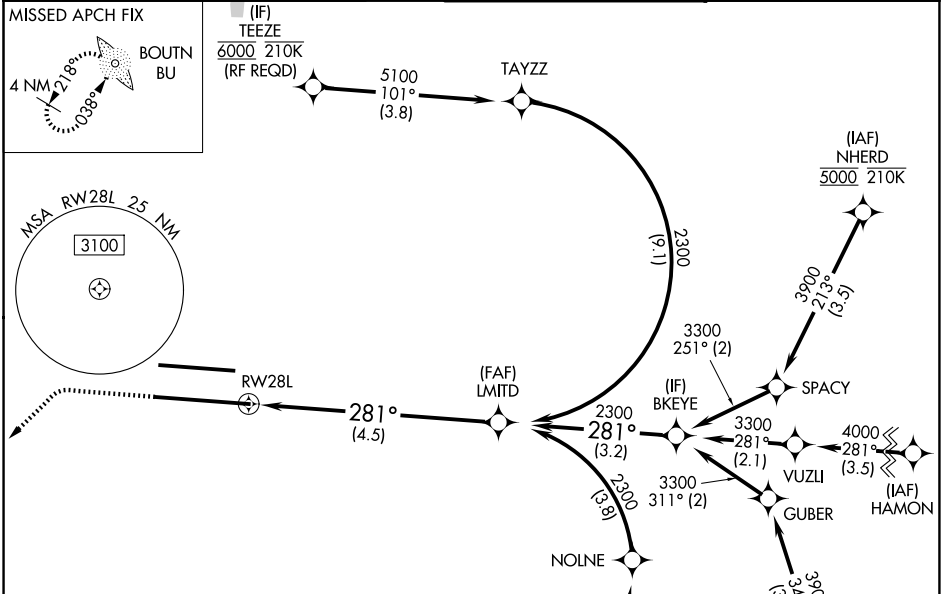
▽ For uncompensated Baro-VNAV systems, procedure NA below -19°C or above 54°C. For inop ALS, increase RNP 0.30 all Cats visibility to 1½ SM. Simultaneous approach authorized.

MALSRS

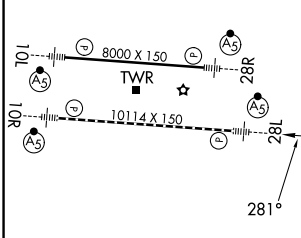


MISSED APPROACH:
Climb to 1400 then climbing left turn to 3000 direct BOUTN LOM and hold.

D-ATIS 124.6	COLUMBUS APP CON 125.95 371.975	COLUMBUS TOWER 132.7 257.8	GND CON 121.9 348.6
------------------------	---	--------------------------------------	-------------------------------



ELEV 815	D	TDZE 815
----------	----------	----------

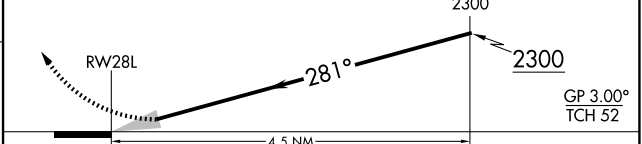


(IF) JESCE
6000 210K (RF REQD)

1400 3000 BU

VGSI and RNAV glidepath not coincident (VGSI Angle 3.00/ TCH 68).

LMITD See planview for multiple IF locations.



CATEGORY	A	B	C	D
RNP 0.17 DA		1147/26	332 (400-½)	
RNP 0.30 DA		1314/50	499 (500-1)	

TDZL/RCLS Rwy 10R-28L
HIRL Rwy 10R-28L and 10L-28R

COLUMBUS, OHIO
Amdt 2A 24MAR22

40°00'N-82°54'W

JOHN GLENN COLUMBUS INTL (CMH)
RNAV (RNP) Z RWY 28L

AUTHORIZATION REQUIRED

EC-2, 11 JUN 2026 to 09 JUL 2026

EC-2, 11 JUN 2026 to 09 JUL 2026