


WAAS CH <b>40299</b> <b>W10B</b>	APP CRS <b>101°</b>	Rwy Ldg TDZE Apt Elev	<b>8000</b> <b>815</b> <b>815</b>
--	------------------------	-----------------------------	---

# RNAV (GPS) Y RWY 10L

JOHN GLENN COLUMBUS INTL (CMH)

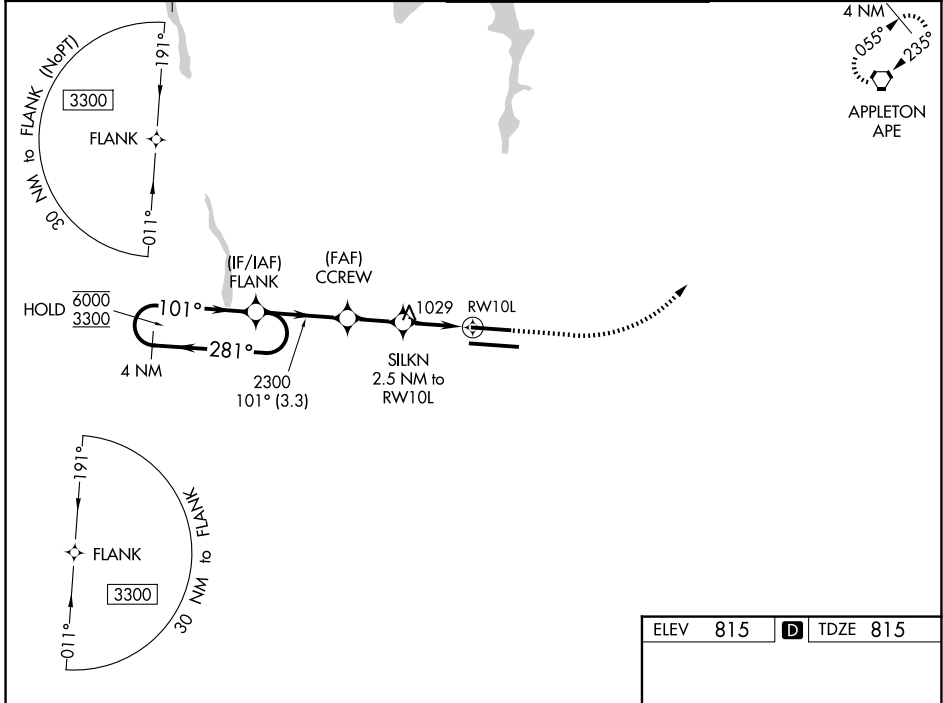
**RNP APCH.**

▼ For uncompensated Baro-VNAV systems, LNAV/VNAV NA below -19°C or above 54°C.  
 ▲ LNAV procedure NA during simultaneous operations. Use of FD or AP providing RNAV track guidance required during simultaneous operations. Simultaneous approach authorized. For inop ALS, increase LNAV Cat C/D visibility to 1½ SM.  
 # RVR 1800 authorized with use of FD or AP or HUD to DA.

MALSR 

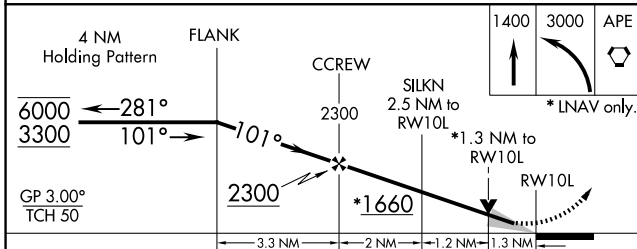
MISSED APPROACH:  
Climb to 1400 then climbing left turn to 3000 direct APE VORTAC and hold.

D-ATIS <b>124.6</b>	COLUMBUS APP CON <b>125.95 371.975</b>	COLUMBUS TOWER <b>132.7 257.8</b>	GND CON <b>121.9 348.6</b>
------------------------	---	--------------------------------------	-------------------------------



EC-2, 11 JUN 2026 to 09 JUL 2026

EC-2, 11 JUN 2026 to 09 JUL 2026



ELEV 815	<b>D</b> TDZE 815
----------	-------------------

Detailed diagram of the RWY 10L approach path. Key features include:

- TWR (8000 X 1.50)
- ALS (101.14 X 1.50)
- Altitudes: 1400, 3000, APE
- Angles: 101°, 101°, 281°
- Distances: 1.3 NM to RWY 10L

CATEGORY	A	B	C	D
LPV DA #		1015/24	200 (200-½)	
LNAV/VNAV DA		1197/35	382 (400-⅝)	
LNAV MDA	1280/24	465 (500-½)	1280/50	465 (500-1)
CIRCLING	1340-1	525 (600-1)	1520-2 705 (800-2)	1520-2¼ 705 (800-2¼)

TDZL/RCLS Rwy 10R-28L  
HIRL Rwy 10R-28L and 10L-28R