

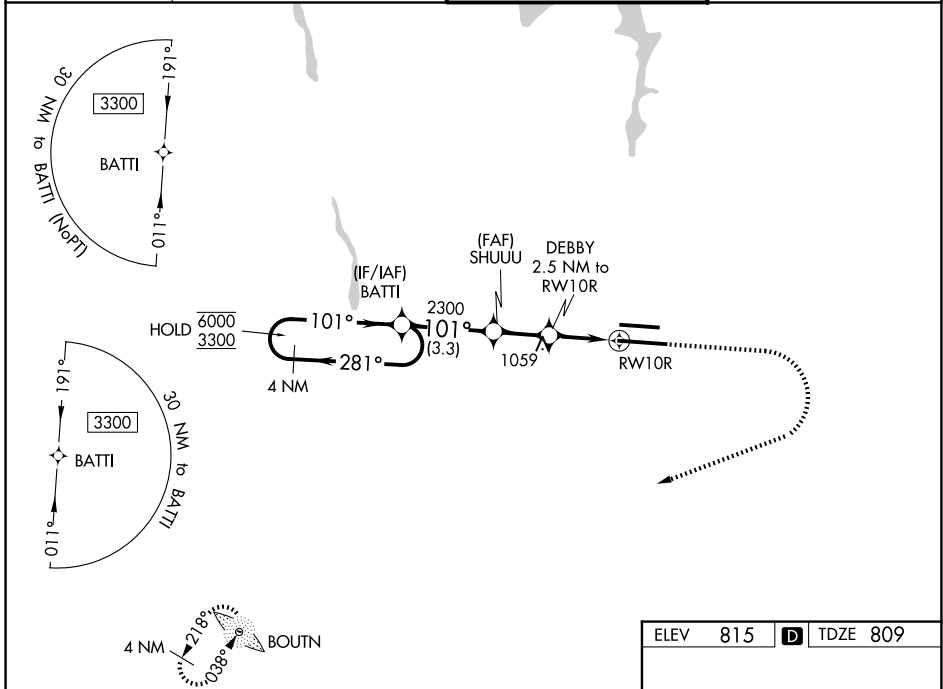
WAAS CH 99603 W10A	APP CRS 101°	Rwy Ldg TDZE 809 Apt Elev 815	10114
--	------------------------	---	--------------

RNAV (GPS) Y RWY 10R

JOHN GLENN COLUMBUS INTL (CMH)

RNP APCH.	MALSR	MISSED APPROACH: Climb to 1400 then climbing right turn to 3000 direct BU LOM and hold.
<p>▼ For uncompensated Baro-VNAV systems, LNAV/VNAV NA below -19°C or above 54°C. LNAV procedure NA during simultaneous operations. Use of FD or AP providing RNAV track guidance required during simultaneous operations. For inop ALS, increase LNAV Cat C/D visibility to 1½ SM. Simultaneous approach authorized.</p>		

D-ATIS 124.6	COLUMBUS APP CON 125.95 371.975	COLUMBUS TOWER 132.7 257.8	GND CON 121.9 348.6
------------------------	---	--------------------------------------	-------------------------------



EC-2, 11 JUN 2026 to 09 JUL 2026

EC-2, 11 JUN 2026 to 09 JUL 2026

4 NM Holding Pattern	VGSI and RNAV glidepath not coincident (VGSI Angle 3.00/TCH 70).	1400	3000	BU	
6000 ← 281°	3300 → 101°	2300	DEBBY 2.5 NM to RWY 10R	*1.4 NM to RWY 10R	
GP 3.00°	TCH 54	2300	*1660	RWY 10R	
		3.3 NM	2 NM	1.1 NM	1.4 NM
CATEGORY	A	B	C	D	
LPV DA		1009/18	200 (200-½)		
LNAV/VNAV DA		1194/35	385 (400-¾)		
LNAV MDA	1320/24	511 (600-½)	1320/55	511 (600-1)	
CIRCLING	1340-1	525 (600-1)	1520-2 705 (800-2)	1520-2¼ 705 (800-2¼)	
				TDZL/RCLS Rwy 10R-28L HIRL Rwy 10R-28L and 10L-28R	