

WAAS CH 86619 W28B	APP CRS 281°	Rwy Ldg TDZE Apt Elev	8000 813 815
--	------------------------	-----------------------------	---

RNAV (GPS) Y RWY 28R

JOHN GLENN COLUMBUS INTL (CMH)

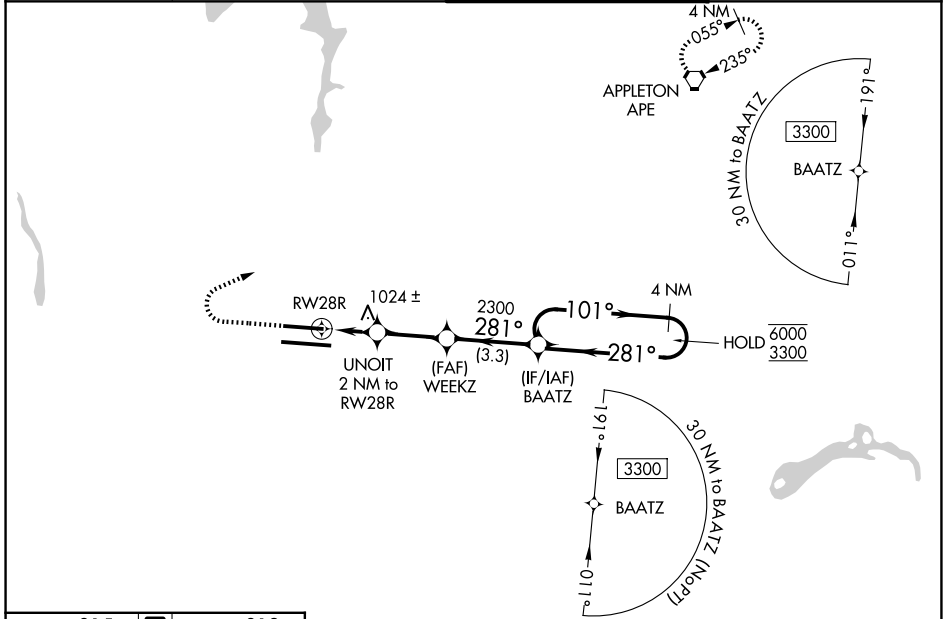
RNP APCH - GPS.

Simultaneous approach authorized. For uncompensated Baro-VNAV systems, LNAV/VNAV NA below -19°C or above 54°C. LNAV procedure NA during simultaneous operations. Use of FD or AP providing RNAV track guidance required during simultaneous operations. For inop ALS, increase LNAV/VNAV all Cats visibility to RVR 4500; increase LNAV Cat C/D visibility to 1 3/8 SM. *RVR 1800 authorized with use of FD or HUD to DA.

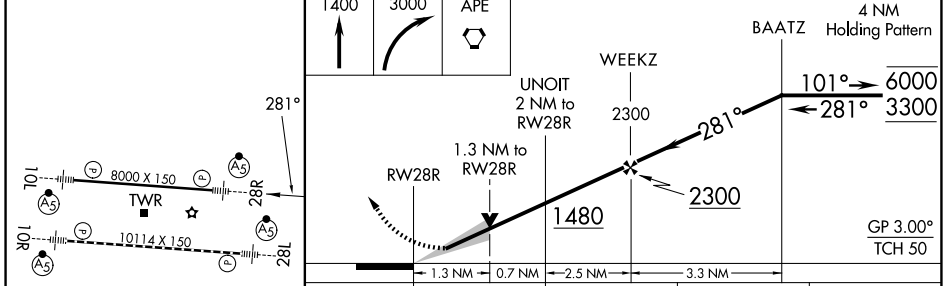
MALSR

MISSED APPROACH: Climb to 1400 then climbing right turn to 3000 direct APE VORTAC and hold.

D-ATIS 124.6	COLUMBUS APP CON 125.95 371.975	COLUMBUS TOWER 132.7 257.8	GND CON 121.9 348.6
------------------------	---	--------------------------------------	-------------------------------



ELEV 815	D	TDZE 813
----------	----------	----------



CATEGORY	A	B	C	D
LPV DA*	1013/24 200 (200-1/2)			
LNAV/VNAV DA	1118/24 305 (400-1/2)			
LNAV MDA	1280/24	467 (500-1/2)	1280/50	467 (500-1)
CIRCLING	1340-1	525 (600-1)	1520-2 705 (800-2)	1520-2 1/4 705 (800-2 1/4)

TDZL/RCLS Rwy 10R-28L
HIRL Rwy 10R-28L and 10L-28R

EC-2, 11 JUN 2026 to 09 JUL 2026

EC-2, 11 JUN 2026 to 09 JUL 2026