

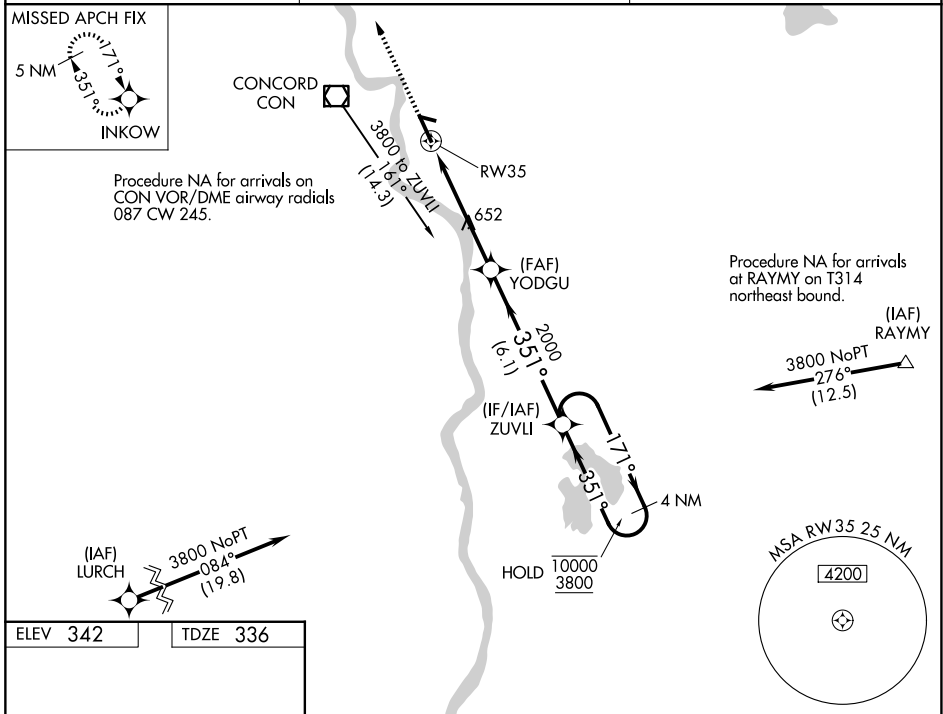
WAAS CH <b>90112</b> <b>W35A</b>	APP CRS <b>351°</b>	Rwy Ldg TDZE <b>336</b> Apt Elev <b>342</b>
--	------------------------	---

# RNAV (GPS) RWY 35

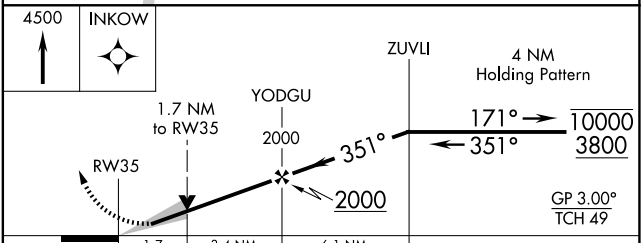
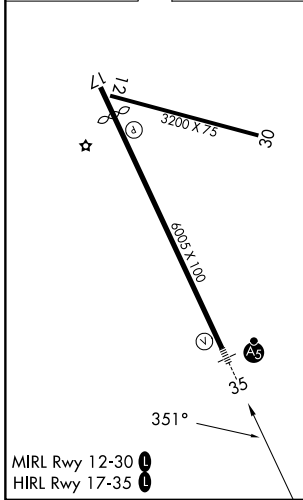
CONCORD MUNI (CON)

RNP APCH - GPS.	MALSR	MISSED APPROACH: Climb to 4500 direct INKOW and hold, continue climb-in-hold to 4500.
<p>⚠ Circling Rwy 12, 17, 30 NA at night. For uncompensated Baro-VNAV systems, LNAV/VNAV NA below -20°C or above 54°C. For inop ALS, increase LNAV/VNAV visibility to 1½ SM, LNAV Cats C and D visibility to 1½ SM.</p>		

ASOS <b>132.325</b>	BOSTON APP CON <b>127.35 269.075</b>	UNICOM <b>122.7 (CTAF) ①</b>
------------------------	---	---------------------------------



ELEV 342	TDZE 336
----------	----------



CATEGORY	A	B	C	D
LPV DA	586-1½ 250 (300-1½)			
LNAV/VNAV DA	967-1¾ 631 (700-1¾)			
LNAV MDA	940-1½ 604 (600-1½)	940-1¾ 604 (600-1¾)		
CIRCLING	940-1 598 (600-1)	1080-1 738 (800-1)	1500-3 1158 (1200-3)	

NE-1, 11 JUN 2026 to 09 JUL 2026

NE-1, 11 JUN 2026 to 09 JUL 2026