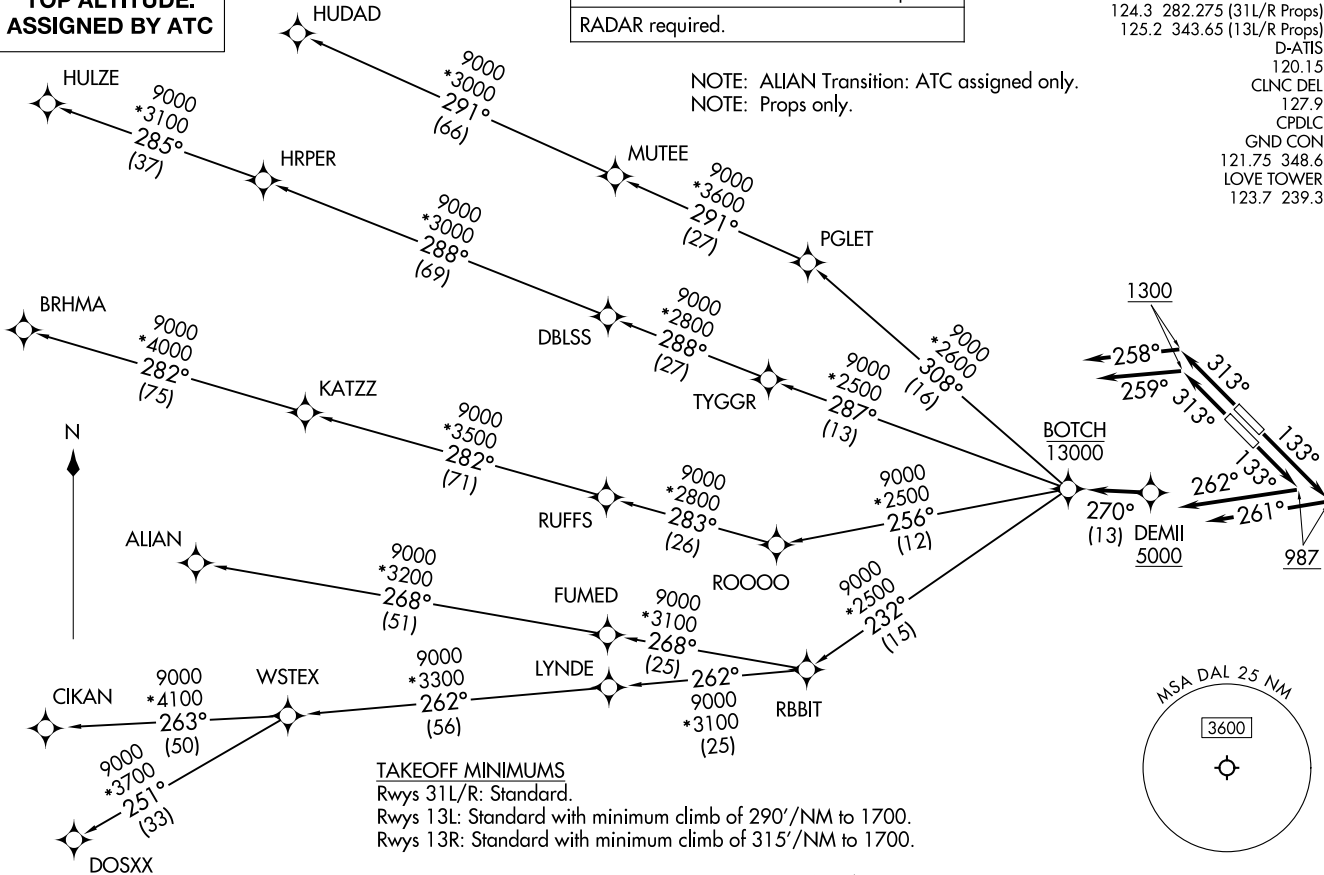


RNAV 1 - DME/DME/IRU or GPS required.
RADAR required.

LONE STAR DEP CON
124.3 282.275 (31L/R Props)
125.2 343.65 (13L/R Props)
D-ATIS
120.15
CLNC DEL
127.9
CPDLC
GND CON
121.75 348.6
LOVE TOWER
123.7 239.3

NOTE: ALIAN Transition: ATC assigned only.
NOTE: Props only.

TOP ALTITUDE:
ASSIGNED BY ATC



(CONTINUED ON FOLLOWING PAGE)

BOTCH TWO DEPARTURE (RNAV)
BOTCH2.BOTCH 14MAY26

DALLAS, TEXAS
DALLAS LOVE FLD (DAL)

BOTCH TWO DEPARTURE (RNAV)
BOTCH2.BOTCH 26134

DALLAS LOVE FLD (DAL)
DALLAS, TEXAS

AL-106 (FAA)

NOTE: Chart not to scale.

BOTCH TWO DEPARTURE (RNAV)



DEPARTURE ROUTE DESCRIPTION

TAKEOFF RUNWAY 13L: Climb on heading 133° to 987, then on heading 261° or as assigned by ATC, for vectors to cross DEMII at or above 5000, thence. . .

TAKEOFF RUNWAY 13R: Climb on heading 133° to 987, then on heading 262° or as assigned by ATC, for vectors to cross DEMII at or above 5000, thence. . .

TAKEOFF RUNWAY 31L: Climb on heading 313° to 1300, then on heading 259° or as assigned by ATC, for vectors to cross DEMII at or above 5000, thence. . .

TAKEOFF RUNWAY 31R: Climb on heading 313° to 1300, then on heading 258° or as assigned by ATC, for vectors to cross DEMII at or above 5000, thence. . .

. . .on track 270° to cross BOTCH at or below 13000, then on (transition). Maintain ATC assigned altitude, expect filed altitude 10 minutes after departure.

ALIAN TRANSITION (BOTCH2.ALIAN)

BRHMA TRANSITION (BOTCH2.BRHMA)

CIKAN TRANSITION (BOTCH2.CIKAN)

DOSXX TRANSITION (BOTCH2.DOSXX)

HUDAD TRANSITION (BOTCH2.HUDAD)

HULZE TRANSITION (BOTCH2.HULZE)

WSTEX TRANSITION (BOTCH2.WSTEX)

SC-2, 11 JUN 2026 to 09 JUL 2026

SC-2, 11 JUN 2026 to 09 JUL 2026