

# ESNYE SEVEN DEPARTURE (RNAV)

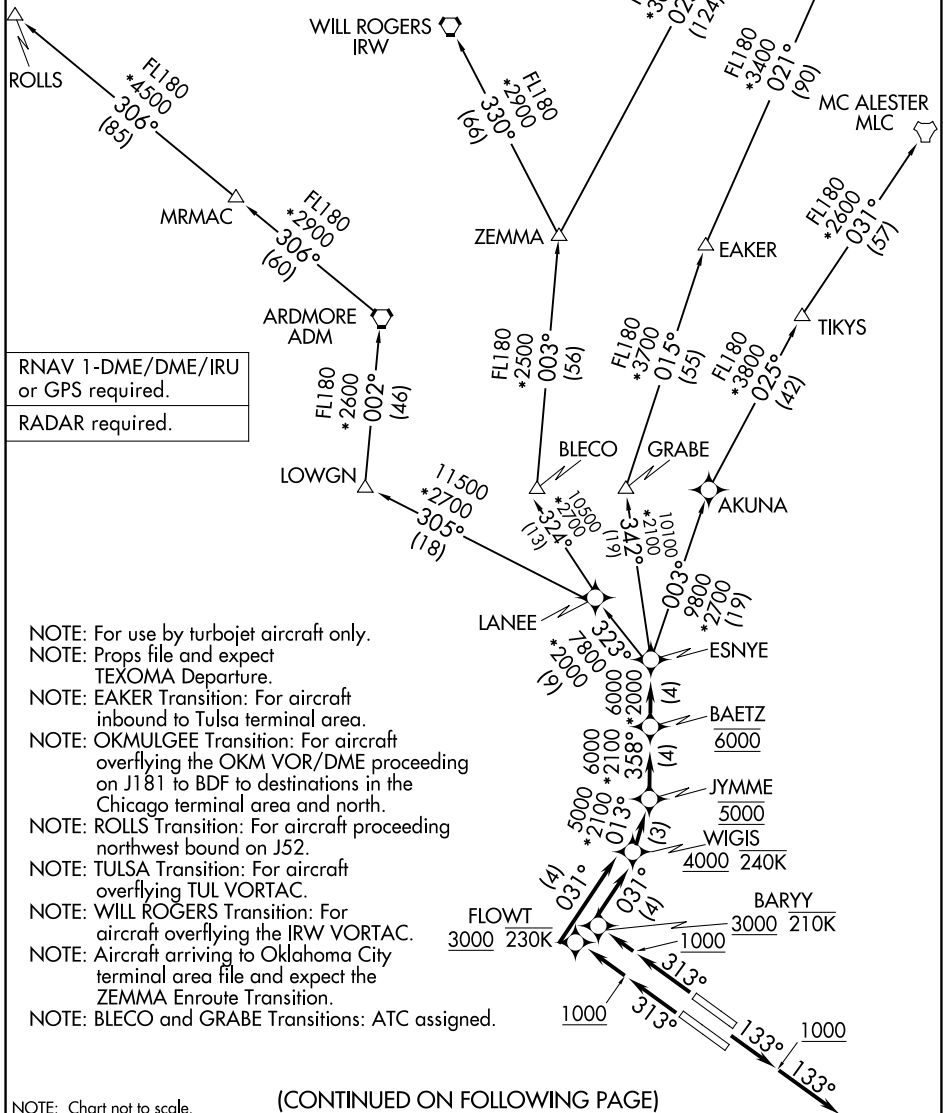
DALLAS, TEXAS

LONE STAR DEP CON  
 118.55 290.35  
 D-ATIS  
 120.15  
 CLNC DEL  
 127.9  
 CPDLC  
 GND CON  
 121.75 348.6  
 LOVE TOWER  
 123.7 239.3

**TOP ALTITUDE:  
 6000**

### TAKEOFF MINIMUMS

Rwys 13L/R: Standard with minimum climb  
 of 500' per NM to 1200.  
 Rwys 31L/R: Standard with minimum climb  
 of 500' per NM to 1000.



- NOTE: For use by turbojet aircraft only.
- NOTE: Props file and expect TEXOMA Departure.
- NOTE: EAKER Transition: For aircraft inbound to Tulsa terminal area.
- NOTE: OKMULGEE Transition: For aircraft overflying the OKM VOR/DME proceeding on J181 to BDF to destinations in the Chicago terminal area and north.
- NOTE: ROLLS Transition: For aircraft proceeding northwest bound on J52.
- NOTE: TULSA Transition: For aircraft overflying TUL VORTAC.
- NOTE: WILL ROGERS Transition: For aircraft overflying the IRW VORTAC.
- NOTE: Aircraft arriving to Oklahoma City terminal area file and expect the ZEMMA Enroute Transition.
- NOTE: BLECO and GRABE Transitions: ATC assigned.

(CONTINUED ON FOLLOWING PAGE)

NOTE: Chart not to scale.

# ESNYE SEVEN DEPARTURE (RNAV)

DALLAS, TEXAS

SC-2, 11 JUN 2026 to 09 JUL 2026

SC-2, 11 JUN 2026 to 09 JUL 2026

# ESNYE SEVEN DEPARTURE (RNAV)



## DEPARTURE ROUTE DESCRIPTION

TAKEOFF RUNWAYS 13L/R: Climb on heading 133° to 1000, then on heading 133° or as assigned by ATC, maintain 3000, thence. . . .

. . . .expect RADAR vectors to cross WIGIS at or above 4000, then on track 013° to cross JYMME at 5000, then on track 358° to cross BAETZ at 6000, then on track 358° to ESNYE, then on (transition). Expect filed altitude 10 minutes after departure.

TAKEOFF RUNWAY 31L: Climb on heading 313° to 1000, then direct FLOWT at or above 3000 at or below 230K then on track 031° to cross WIGIS at or above 4000 and at or below 240K, thence. . . .

TAKEOFF RUNWAY 31R: Climb on heading 313° to 1000, then direct BARYY at or above 3000 at or below 210K, then on track 031° to cross WIGIS at or above 4000 and at or below 240K, thence. . . .

. . . . thence on track 013° to cross JYMME at 5000, then on track 358° to cross BAETZ at 6000, then on track 358° to ESNYE, then on (transition). Maintain 6000. Expect filed altitude 10 minutes after departure.

ARDMORE TRANSITION (ESNYE7.ADM)

BLECO TRANSITION (ESNYE7.BLECO)

EAKER TRANSITION (ESNYE7.EAKER)

GRABE TRANSITION (ESNYE7.GRABE)

MC ALESTER TRANSITION (ESNYE7.MLC)

OKMULGEE TRANSITION (ESNYE7.OKM)

ROLLS TRANSITION (ESNYE7.ROLLS)

TIKYS TRANSITION (ESNYE7.TIKYS)

TULSA TRANSITION (ESNYE7.TUL)

WILL ROGERS TRANSITION (ESNYE7.IRW)

ZEMMA TRANSITION (ESNYE7.ZEMMA)

SC-2, 11 JUN 2026 to 09 JUL 2026

SC-2, 11 JUN 2026 to 09 JUL 2026