

KINGDOM FIVE DEPARTURE
(KING5.TTT) 17 APR 25

DALLAS, TEXAS
DALLAS LOVE FLD (DAL)

RADAR and DME required.

TOP ALTITUDE:
RWYS 13L/R: 8000
RWYS 31L/R:
ASSIGNED BY ATC

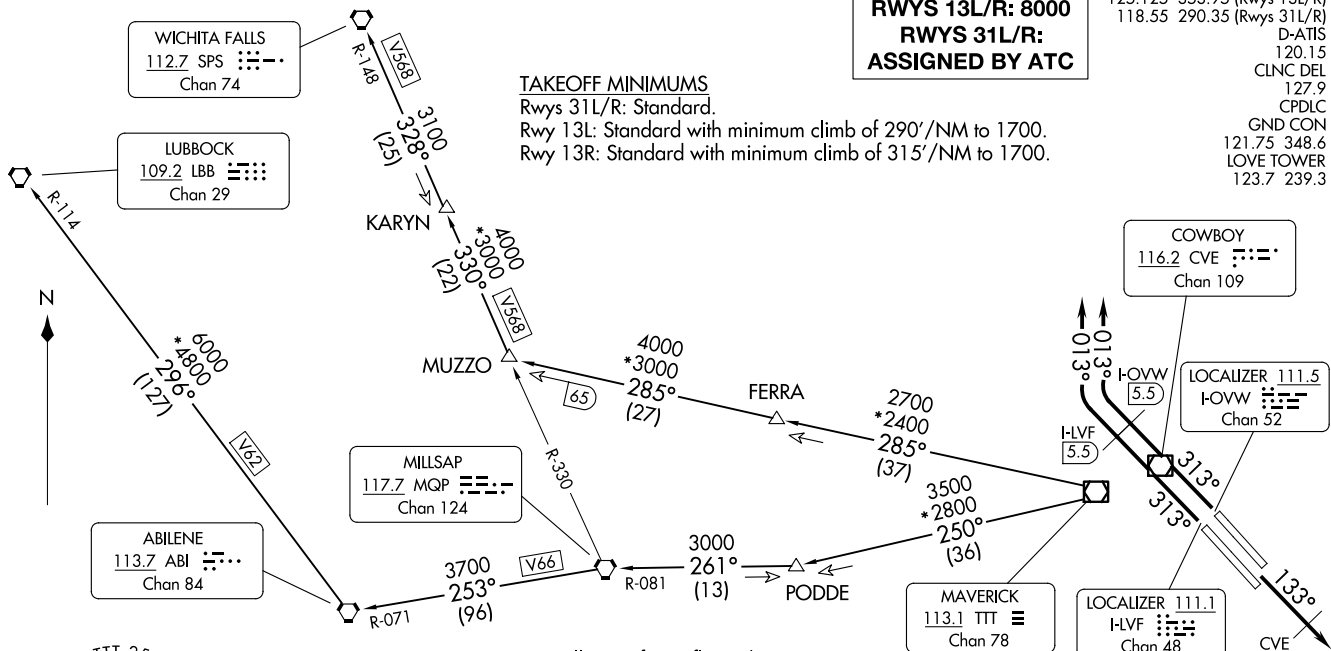
LONE STAR DEP CON
125.125 353.95 (Rwys 13L/R)
118.55 290.35 (Rwys 31L/R)
D-ATIS
120.15
CLNC DEL
127.9
CPDLC
GND CON
121.75 348.6
LOVE TOWER
123.7 239.3

TAKEOFF MINIMUMS

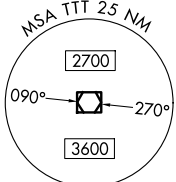
Rwys 31L/R: Standard.

Rwy 13L: Standard with minimum climb of 290'/NM to 1700.

Rwy 13R: Standard with minimum climb of 315'/NM to 1700.



- NOTE: LUBBOCK Transition: For all aircraft overflying the MQP VORTAC westbound or direct.
- NOTE: MILLSAP Transition: For all aircraft overflying the MQP VORTAC westbound or direct.
- NOTE: PODDE Transition: ATC assigned.
- NOTE: WICHITA FALLS Transition: For all aircraft landing within the Wichita Falls terminal area or overflying the SPS VORTAC.
- NOTE: For all aircraft requesting 17000 and below.
- NOTE: Props departing DAL must contact Clearance Delivery for departure instructions.



NOTE: Chart not to scale.

(CONTINUED ON FOLLOWING PAGE)

(KING5.TTT) 26134
KINGDOM FIVE DEPARTURE

AL-106 (FAA)

DALLAS LOVE FLD (DAL)
DALLAS, TEXAS

KINGDOM FIVE DEPARTURE



DEPARTURE ROUTE DESCRIPTION

TAKEOFF RUNWAYS 13L/R: Climb on heading 133°, cross CVE 13 DME at or below 6000, then maintain 8000 for RADAR vectors to appropriate route and expect filed altitude 10 minutes after departure.

TAKEOFF RUNWAYS 31L/R: Climb on heading 313° until the I-LVF 5.5 DME or I-OVW 5.5 DME, then right turn heading 013° for RADAR vectors to appropriate route, maintain ATC assigned altitude and expect filed altitude 10 minutes after departure.

LUBBOCK TRANSITION (KING5.LBB): From over TTT VOR/DME on TTT R-250 to PODDE, then on MQP R-081 to MQP VORTAC, then on MQP R-253 and ABI R-071 to ABI VORTAC, then on ABI R-296 and LBB R-114 to LBB VORTAC.

MILLSAP TRANSITION (KING5.MQP): From over TTT VOR/DME on TTT R-250 to PODDE, then on MQP R-081 to MQP VORTAC.

PODDE TRANSITION (KING5.PODDE): From over TTT VOR/DME on TTT R-250 to PODDE.

WICHITA FALLS TRANSITION (KING5.SPS): From over TTT VOR/DME on TTT R-285 to MUZZO, then on MQP R-330 and SPS R-148 to KARYN, then on SPS R-148 to SPS VORTAC.

SC-2, 11 JUN 2026 to 09 JUL 2026

SC-2, 11 JUN 2026 to 09 JUL 2026