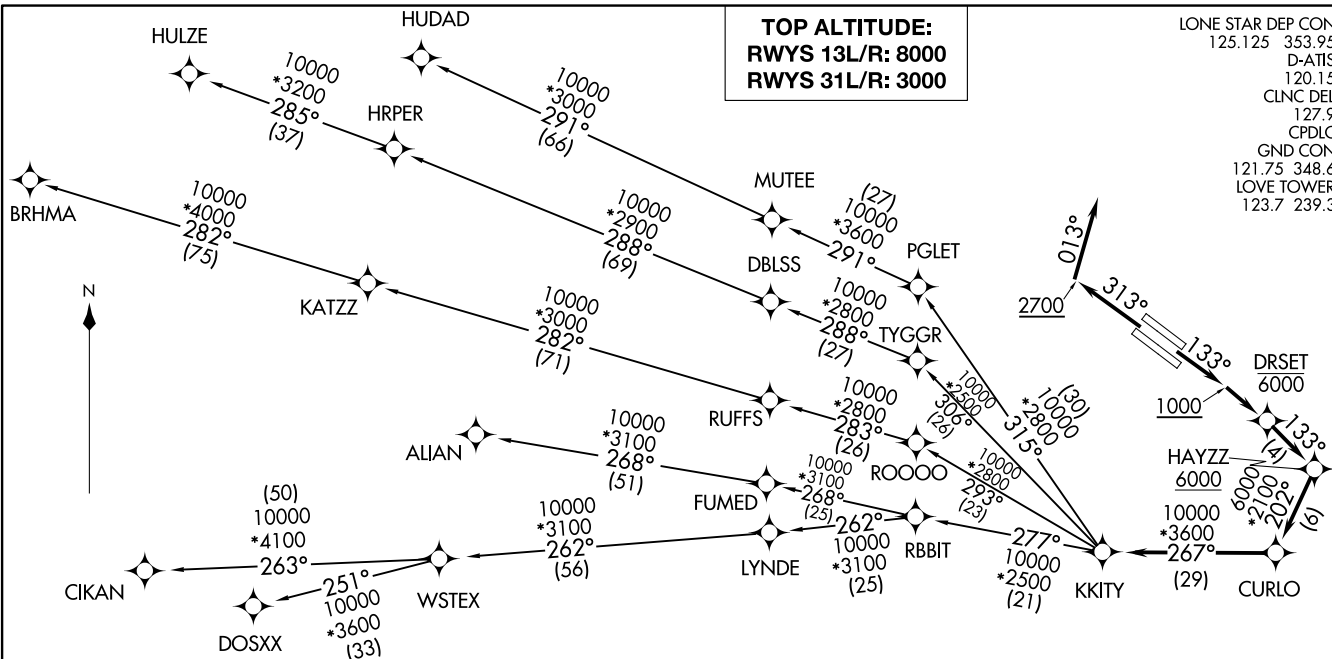


KKITY FIVE DEPARTURE (RNAV)
(KKITY5.KKITY) 05DEC19

DALLAS, TEXAS
DALLAS LOVE FLD (DAL)



LONE STAR DEP CON
125.125 353.95
D-ATIS
120.115
CLNC DEL
127.9
CPDLC
GND CON
121.75 348.6
LOVE TOWER
123.7 239.3

(KKITY5.KKITY) 24305
KKITY FIVE DEPARTURE (RNAV)

AL-106 (FAA)

DALLAS LOVE FLD (DAL)
DALLAS, TEXAS

- NOTE: RADAR required.
NOTE: DME/DME/IRU or GPS required.
NOTE: RNAV 1.
NOTE: For use by turbojet aircraft only.
NOTE: RNAV-capable props: File and expect the SWABR RNAV SID.
NOTE: ALIAN Transition: ATC assigned only.
NOTE: BRHMA Transition: For aircraft inbound to Lubbock terminal area.
NOTE: Use WORTH DEPARTURE during the period 2100-0600 local time in lieu of the KKITY DEPARTURE.
NOTE: WSTEX Transition: For aircraft inbound to Abilene and San Angelo terminal area airports only.

TAKEOFF MINIMUMS
Rwys 13L/R: Standard with minimum climb of 500' per NM to 1200.
Rwys 31L/R: Standard with minimum climb of 500' per NM to 1000.

(NARRATIVE ON FOLLOWING PAGE)

NOTE: Chart not to scale.

KKITY FIVE DEPARTURE (RNAV)



DEPARTURE ROUTE DESCRIPTION

TAKEOFF RUNWAYS 13L/R: Climb on heading 133° to 1000, thence. . . .

. . . .direct to cross DRSET at or below 6000, then on track 133° to cross HAYZZ at or above 6000, then on track 202° to CURLO, then on track 267° to KKITY, then on (transition). Maintain 8000. Expect filed altitude 10 minutes after departure.

TAKEOFF RUNWAYS 31L/R: Climb on heading 313° to 2700, then heading 013° or as assigned by ATC, maintain 3000. Thence. . . .

. . . .expect RADAR vectors to cross HAYZZ at or above 6000, then on track 202° to CURLO, then on track 267° to KKITY, then on (transition). Expect filed altitude 10 minutes after departure.

ALIAN TRANSITION (KKITY5.ALIAN)

BRHMA TRANSITION (KKITY5.BRHMA)

CIKAN TRANSITION (KKITY5.CIKAN)

DOSXX TRANSITION (KKITY5.DOSXX)

HULZE TRANSITION (KITTY5.HULZE)

HUDAD TRANSITION (KKITY5.HUDAD)

WSTEX TRANSITION (KKITY5.WSTEX)

SC-2, 11 JUN 2026 to 09 JUL 2026

SC-2, 11 JUN 2026 to 09 JUL 2026