

KRUMM ONE DEPARTURE

LONE STAR DEP CON
118.55 290.35
D-ATIS
120.15
CLNC DEL
127.9
CPDLC
GND CON
121.75 348.6
LOVE TOWER
123.7 239.3

**TOP ALTITUDE:
5000**

DME and RADAR required.

NOTE: This DP is to be used only upon assignment by Love Tower normally between 2100-0600 LCL time.

NOTE: WILL ROGERS Transition: For all aircraft inbound to the Oklahoma City area or overflying IRW VORTAC.

NOTE: TULSA Transition: For all aircraft overflying TUL VORTAC.

NOTE: OKMULGEE Transition: For all aircraft overflying OKM VOR/DME proceeding on J181 BDF VORTAC proceeding to destinations in the Chicago Terminal area and north.

TULSA
114.4 TUL Chan 91

OKMULGEE
114.9 OKM Chan 96

WILL ROGERS
114.1 IRW Chan 88

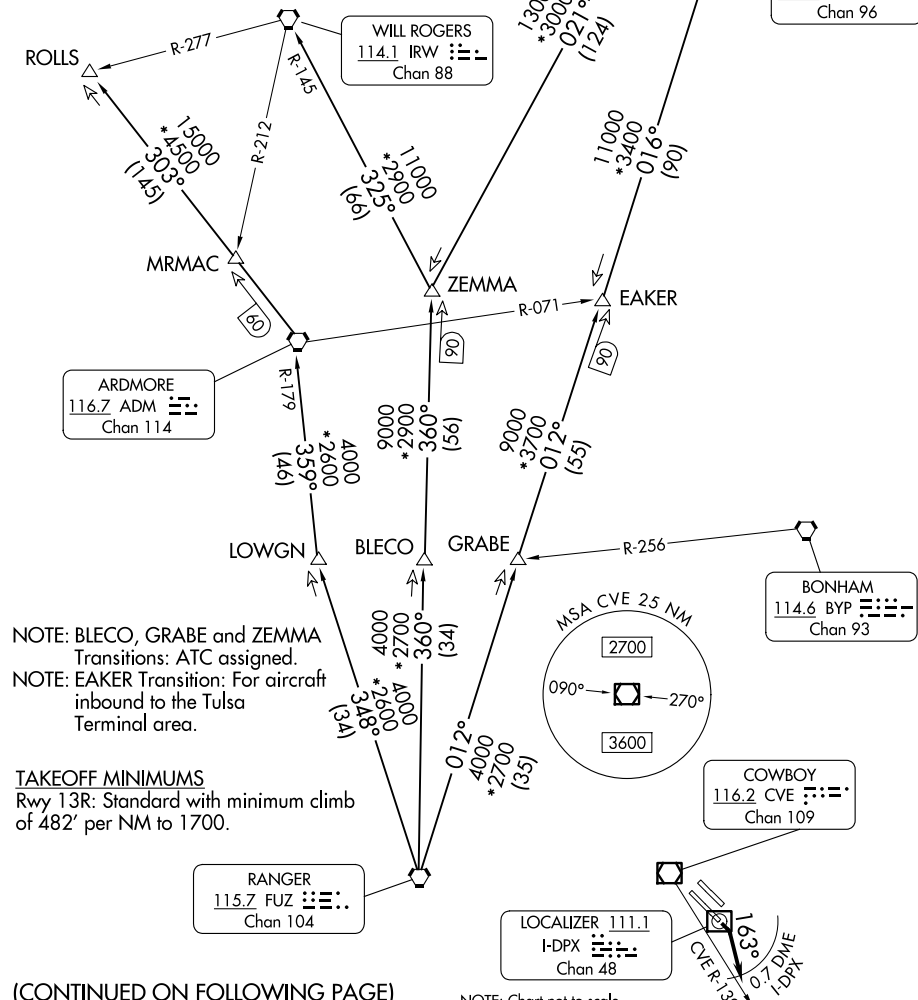
ARDMORE
116.7 ADM Chan 114

BONHAM
114.6 BYP Chan 93

COWBOY
116.2 CVE Chan 109

RANGER
115.7 FUZ Chan 104

LOCALIZER 111.1
I-DPX Chan 48



TAKEOFF MINIMUMS
Rwy 13R: Standard with minimum climb of 482' per NM to 1700.

NOTE: BLECO, GRABE and ZEMMA Transitions: ATC assigned.
NOTE: EAKER Transition: For aircraft inbound to the Tulsa Terminal area.

(CONTINUED ON FOLLOWING PAGE)

NOTE: Chart not to scale.

SC-2, 11 JUN 2026 to 09 JUL 2026

SC-2, 11 JUN 2026 to 09 JUL 2026

KRUMM ONE DEPARTURE

KRUMM ONE DEPARTURE



DEPARTURE ROUTE DESCRIPTION

TAKEOFF RUNWAY 13R: Turn right on heading 163° not later than 0.7 DME outbound on the I-DPX localizer southeast course, to intercept and climb on the CVE R-139 for vectors to appropriate route, unless otherwise advised maintain 5000 and expect filed altitude 10 minutes after departure.

ARDMORE TRANSITION (KRUMM1.ADM): From over FUZ VORTAC on FUZ R-348 to LOWGN, then on ADM R-179 to ADM VORTAC.

BLECO TRANSITION (KRUMM1.BLECO): From over FUZ VORTAC on FUZ R-360 to BLECO.

EAKER TRANSITION (KRUMM1.EAKER): From over FUZ VORTAC on FUZ R-012 to EAKER.

GRABE TRANSITION (KRUMM1.GRABE): From over FUZ VORTAC on FUZ R-012 to GRABE.

OKMULGEE TRANSITION (KRUMM1.OKM): From over FUZ VORTAC on FUZ R-012 to EAKER, then on OKM R-196 to OKM VOR/DME.

ROLLS TRANSITION (KRUMM1.ROLLS): From over FUZ VORTAC on FUZ R-348 to LOWGN, then on ADM R-179 to ADM VORTAC, then on ADM R-303 to ROLLS.

TULSA TRANSITION (KRUMM1.TUL): From over FUZ VORTAC on FUZ R-360 to ZEMMA, then on TUL R-201 to TUL VORTAC.

WILL ROGERS TRANSITION (KRUMM1.IRW): From over FUZ VORTAC on FUZ R-360 to ZEMMA, then on IRW R-145 to IRW VORTAC.

ZEMMA TRANSITION (KRUMM1.ZEMMA): From over FUZ VORTAC on FUZ R-360 to ZEMMA.

SC-2, 11 JUN 2026 to 09 JUL 2026

SC-2, 11 JUN 2026 to 09 JUL 2026