

LNDRE FIVE DEPARTURE (RNAV)
(LNDRES, LNDRE) 09DECT 9

DALLAS LOVE FLD (DAL)
DALLAS, TEXAS

LONE STAR DEP CON
118.55 290.35
D-ATIS
120.15
CLNC DEL
127.9
CPDLC
GND CON
121.75 348.6
LOVE TOWER
123.7 239.3

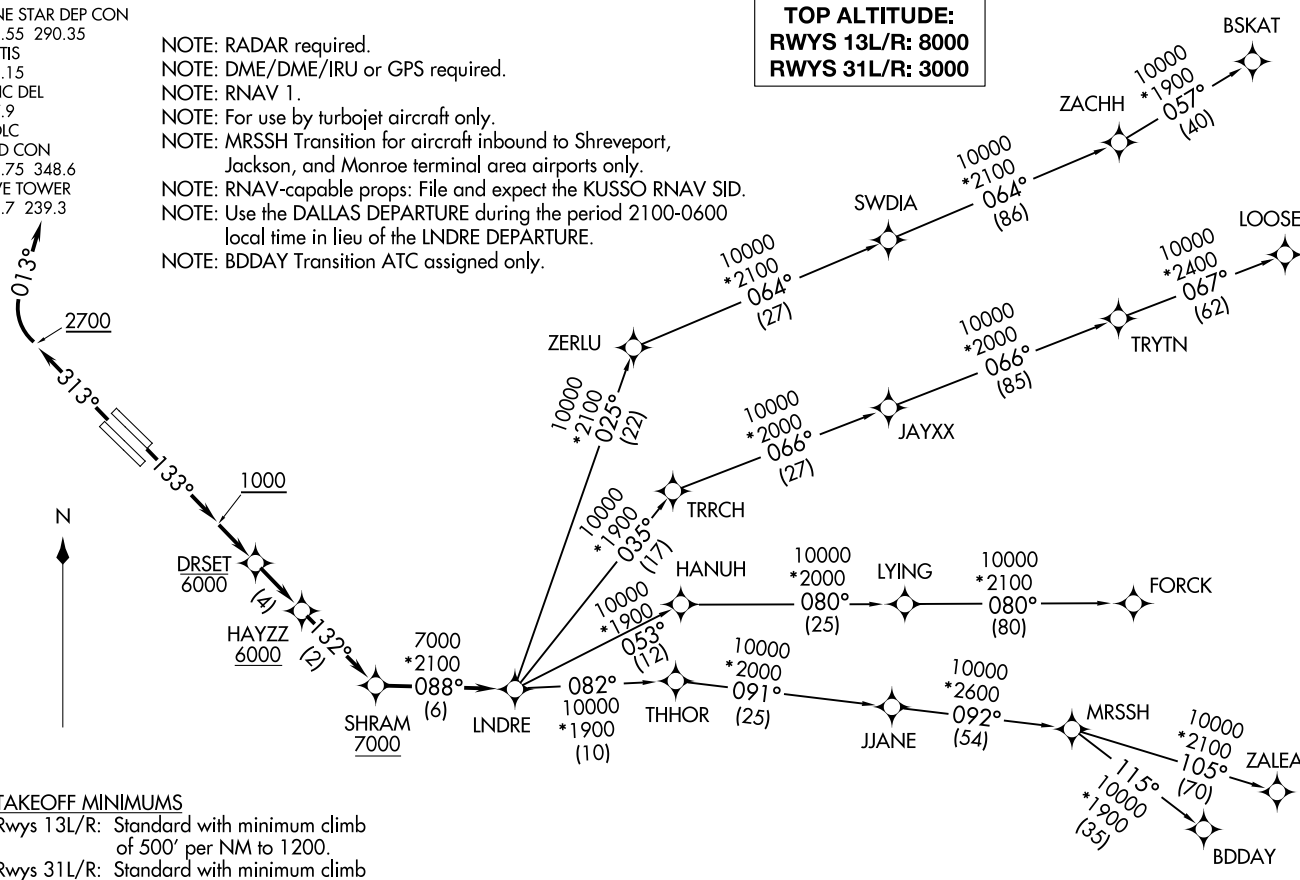
NOTE: RADAR required.
NOTE: DME/DME/IRU or GPS required.
NOTE: RNAV 1.
NOTE: For use by turbojet aircraft only.
NOTE: MRSSH Transition for aircraft inbound to Shreveport, Jackson, and Monroe terminal area airports only.
NOTE: RNAV-capable props: File and expect the KUSSO RNAV SID.
NOTE: Use the DALLAS DEPARTURE during the period 2100-0600 local time in lieu of the LNDRE DEPARTURE.
NOTE: BDDAY Transition ATC assigned only.

**TOP ALTITUDE:
RWYS 13L/R: 8000
RWYS 31L/R: 3000**

(LNDRES, LNDRE) 24305
LNDRE FIVE DEPARTURE (RNAV)

AL-106 (FAA)

DALLAS LOVE FLD (DAL)
DALLAS, TEXAS



TAKEOFF MINIMUMS

Rwys 13L/R: Standard with minimum climb of 500' per NM to 1200.
Rwys 31L/R: Standard with minimum climb of 500' per NM to 1000.

(CONTINUED ON FOLLOWING PAGE)

NOTE: Chart not to scale.

LNDRE FIVE DEPARTURE (RNAV)



DEPARTURE ROUTE DESCRIPTION

TAKEOFF RUNWAYS 13L/R: Climb on heading 133° to 1000, thence. . . .

. . . .direct to cross DRSET at or below 6000, then on track 133° to cross HAYZZ at or above 6000, then on track 132° to cross SHRAM at or above 7000, then on track 088° to LNDRE, then on (transition). Maintain 8000. Expect filed altitude 10 minutes after departure.

TAKEOFF RUNWAYS 31L/R: Climb on heading 313° to 2700, thence. . . .

. . . .right turn heading 013° or as assigned by ATC, maintain 3000, expect RADAR vectors to cross SHRAM at or above 7000, then on track 088° to LNDRE, then on (transition). Expect filed altitude 10 minutes after departure.

BDDAY TRANSITION (LNDRE5.BDDAY)

BSKAT TRANSITION (LNDRE5.BSKAT)

FORCK TRANSITION (LNDRE5.FORCK)

LOOSE TRANSITION (LNDRE5.LOOSE)

MRSSH TRANSITION (LNDRE5.MRSSH)

ZALEA TRANSITION (LNDRE5.ZALEA)

SC-2, 11 JUN 2026 to 09 JUL 2026

SC-2, 11 JUN 2026 to 09 JUL 2026