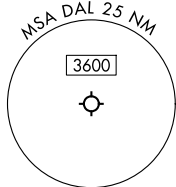


SWTSR SEVEN DEPARTURE (RNAV)

LONE STAR DEP CON
 118.55 290.35
 D-ATIS
 120.15
 CLNC DEL
 127.9
 CPDLC
 GND CON
 121.75 348.6
 LOVE TOWER
 123.7 239.3

RNAV 1 - DME/DME/IRU or GPS required.
 RADAR required.

**TOP ALTITUDE:
 8000**



SC-2, 11 JUN 2026 to 09 JUL 2026

SC-2, 11 JUN 2026 to 09 JUL 2026

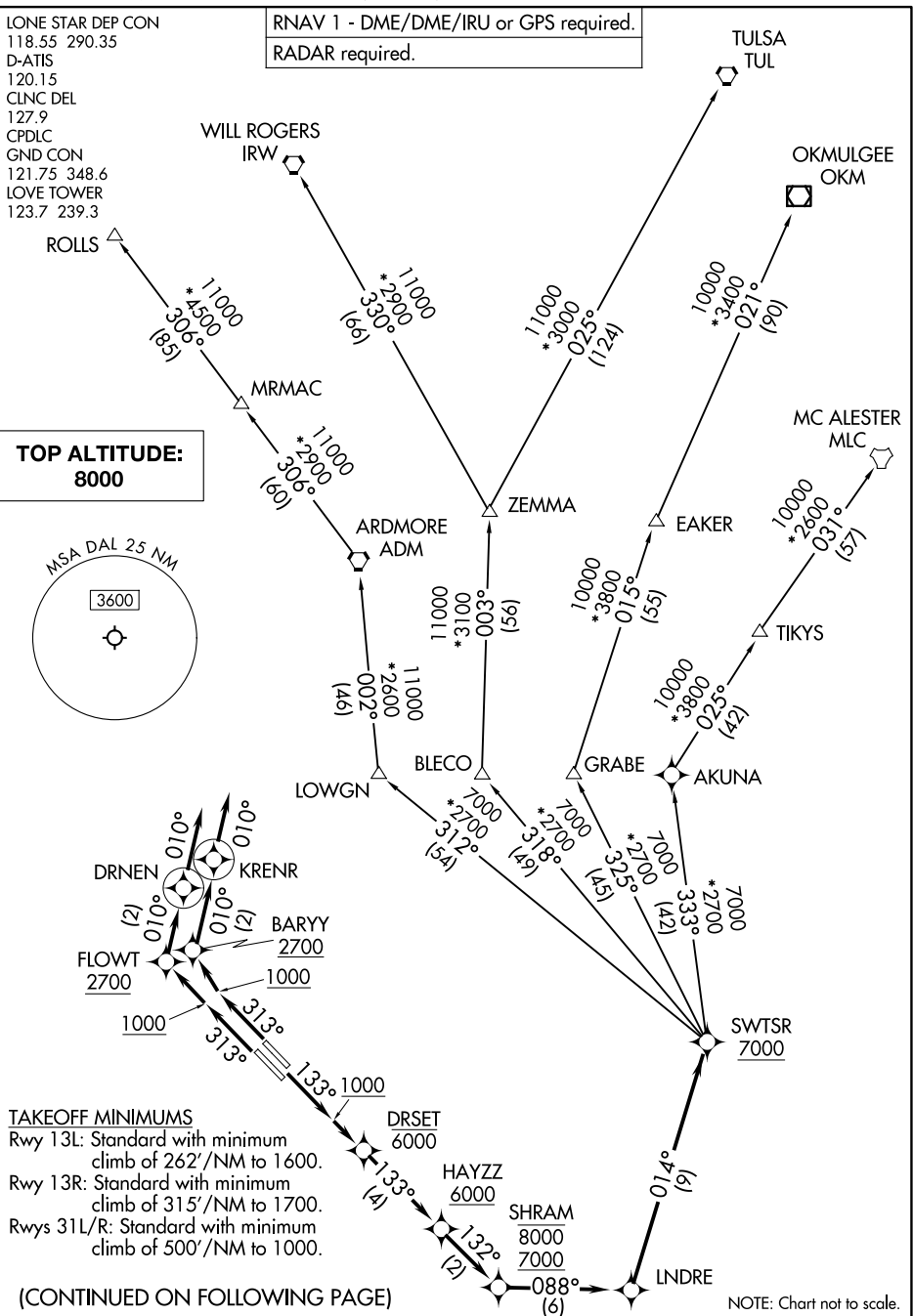
TAKEOFF MINIMUMS

- Rwy 13L: Standard with minimum climb of 262'/NM to 1600.
- Rwy 13R: Standard with minimum climb of 315'/NM to 1700.
- Rwys 31L/R: Standard with minimum climb of 500'/NM to 1000.

(CONTINUED ON FOLLOWING PAGE)

NOTE: Chart not to scale.

SWTSR SEVEN DEPARTURE (RNAV)



SWTSR SEVEN DEPARTURE (RNAV)

DALLAS, TEXAS



DEPARTURE ROUTE DESCRIPTION

TAKEOFF RUNWAYS 13L/R: Climb on heading 133° to 1000, thence. . . .

. . . .direct to cross DRSET at or below 6000, then on track 133° to cross HAYZZ at or above 6000, then on track 132° to cross SHRAM between 7000 and 8000, then on track 088° to LNDRE, then on track 014° to SWTSR, then on (transition). Maintain 8000. Expect filed altitude 10 minutes after departure.

TAKEOFF RUNWAY 31L: Climb on heading 313° to 1000, then direct to cross FLOWT at or above 2700, then on track 010° to DRNEN, then on track 010°, thence. . . .

TAKEOFF RUNWAY 31R: Climb on heading 313° to 1000, then direct to cross BARYY at or above 2700, then on track 010° to KRENR, then on track 010°, thence. . . .

. . . .for vectors to cross SHRAM between 7000 and 8000, then on track 088° to LNDRE, then on track 014° to SWTSR, then on (transition). Maintain 8000. Expect filed altitude 10 minutes after departure.

ARDMORE TRANSITION (SWTSR7.ADM)

BLECO TRANSITION (SWTSR7.BLECO)

EAKER TRANSITION (SWTSR7.EAKER)

GRABE TRANSITION (SWTSR7.GRABE)

MC ALESTER TRANSITION (SWTSR7.MLC)

OKMULGEE TRANSITION (SWTSR7.OKM)

ROLLS TRANSITION (SWTSR7.ROLLS)

TIKYS TRANSITION (SWTSR7.TIKYS)

TULSA TRANSITION (SWTSR7.TUL)

WILL ROGERS TRANSITION (SWTSR7.IRW)

ZEMMA TRANSITION (SWTSR7.ZEMMA)

NOTE: For use by turbojet aircraft only.

NOTE: Props file and expect TEXOMA DEPARTURE.

NOTE: EAKER Transition for aircraft inbound to Tulsa terminal area.

NOTE: Aircraft inbound Oklahoma City terminal area file and expect the ZEMMA Transition.

NOTE: OKMULGEE Transition for aircraft overflying the OKM VOR/DME proceeding on J181 to BDF to destinations in the Chicago terminal area and north.

NOTE: ROLLS Transition for aircraft proceeding northwest bound on J52.

NOTE: TULSA Transition for aircraft overflying TUL VORTAC.

NOTE: WILL ROGERS Transition for aircraft overflying the IRW VORTAC.

NOTE: Use the TEXOMA DEPARTURE during the period 2100-0600 local time in lieu of the SWTSR DEPARTURE.

NOTE: Do not file BLECO Transition: to be assigned by ATC.

NOTE: Do not file GRABE Transition: to be assigned by ATC.

SWTSR SEVEN DEPARTURE (RNAV)

(SWTSR7.SWTSR) 25JAN24

DALLAS, TEXAS

DALLAS LOVE FLD (DAL)

SC-2, 11 JUN 2026 to 09 JUL 2026

SC-2, 11 JUN 2026 to 09 JUL 2026