

TEXOMA FIVE DEPARTURE

LONE STAR DEP CON
118.55 290.35
D-ATIS
120.15
CLNC DEL
127.9
CPDLC
GND CON
121.75 348.6
LOVE TOWER
123.7 239.3

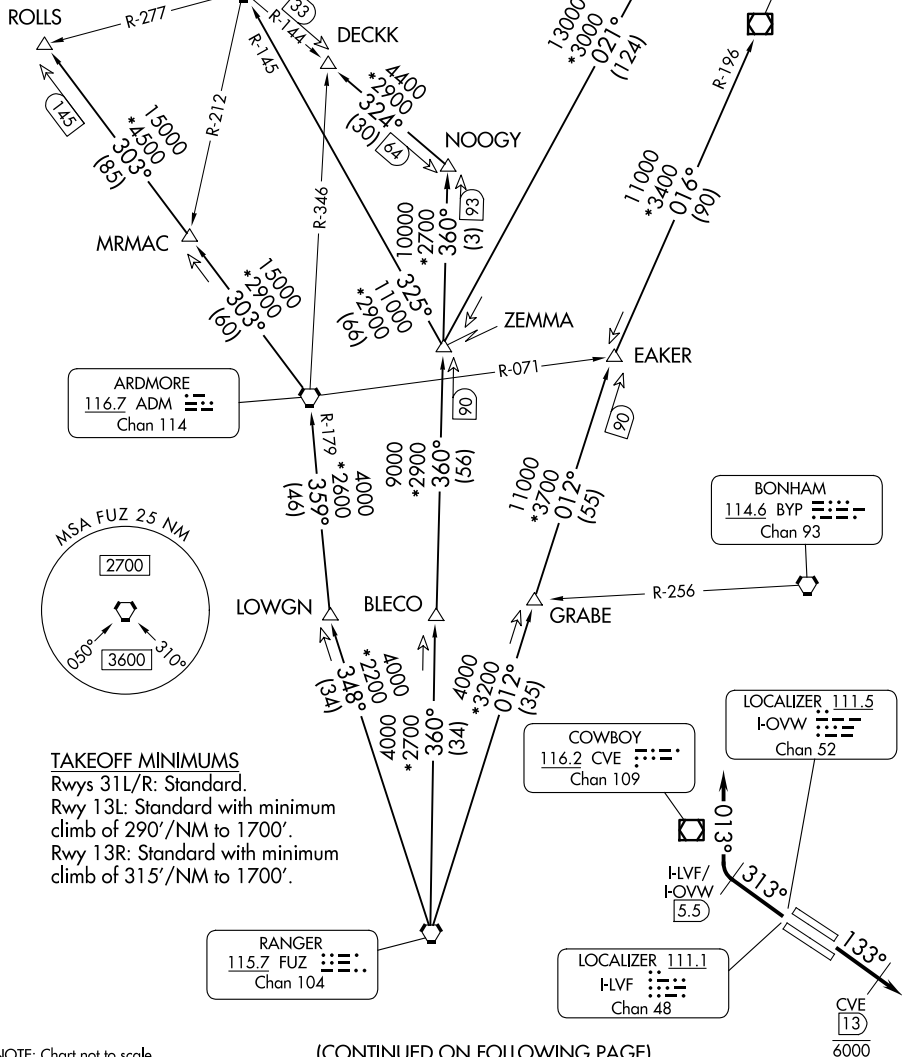
**TOP ALTITUDE:
RWYS 13L/R: 8000
RWYS 31L/R:
ASSIGNED BY ATC**

RADAR and DME required.

TULSA
114.4 TUL :...:
Chan 91

WILL ROGERS
114.1 IRW :...:
Chan 88

OKMULGEE
114.9 OKM :...:
Chan 96



SC-2, 11 JUN 2026 to 09 JUL 2026

SC-2, 11 JUN 2026 to 09 JUL 2026

TAKEOFF MINIMUMS
Rwys 31L/R: Standard.
Rwy 13L: Standard with minimum
climb of 290'/NM to 1700'.
Rwy 13R: Standard with minimum
climb of 315'/NM to 1700'.

RANGER
115.7 FUZ :...:
Chan 104

COWBOY
116.2 CVE :...:
Chan 109

LOCALIZER 111.5
I-0VW :...:
Chan 52

HLV/
I-0VW
[5.5]

LOCALIZER 111.1
HLV :...:
Chan 48

CVE
13
6000

NOTE: Chart not to scale.

(CONTINUED ON FOLLOWING PAGE)

TEXOMA FIVE DEPARTURE

TEXOMA FIVE DEPARTURE

DALLAS, TEXAS



DEPARTURE ROUTE DESCRIPTION

JETS: TAKEOFF RUNWAYS 13L/R: Climb on heading 133°, cross CVE 13 DME at or below 6000, then maintain 8000 for RADAR vectors to appropriate route and expect filed altitude 10 minutes after departure.

JETS: TAKEOFF RUNWAYS 31L/R: Climb on heading 313° until the I-LVF 5.5 DME or I-OVV 5.5 DME, then right turn heading 013° for RADAR vectors to appropriate route, maintain ATC assigned altitude and expect filed altitude 10 minutes after departure.

ARDMORE TRANSITION (TEX5.ADM): From over FUZ VORTAC on FUZ R-348 to LOWGN, then on ADM R-179 to ADM VORTAC.

BLECO TRANSITION (TEX5.BLECO): From over FUZ VORTAC on FUZ R-360 to BLECO.

DECKK TRANSITION (TEX5.DECKK): From over FUZ VORTAC on FUZ R-360 to NOOGY, then on IRW R-144 to DECKK.

EAKER TRANSITION (TEX5.EAKER): From over FUZ VORTAC on FUZ R-012 to EAKER.

GRABE TRANSITION (TEX5.GRABE): From over FUZ VORTAC on FUZ R-012 to GRABE.

OKMULGEE TRANSITION (TEX5.OKM): From over FUZ VORTAC on FUZ R-012 to EAKER, then on OKM R-196 to OKM VOR/DME.

ROLLS TRANSITION (TEX5.ROLLS): From over FUZ VORTAC on FUZ R-348 to LOWGN, then on ADM R-179 to ADM VORTAC, then on ADM R-303 to ROLLS.

TULSA TRANSITION (TEX5.TUL): From over FUZ VORTAC on FUZ R-360 to ZEMMA, then on TUL R-201 to TUL VORTAC.

WILL ROGERS TRANSITION (TEX5.IRW): From over FUZ VORTAC on FUZ R-360 to ZEMMA, then on IRW R-145 to IRW VORTAC.

ZEMMA TRANSITION (TEX5.ZEMMA): From over FUZ VORTAC on FUZ R-360 to ZEMMA.

NOTE: BLECO Transition: ATC assigned.

NOTE: DECKK Transition: For all aircraft inbound to the Oklahoma City area.

NOTE: EAKER Transition: For aircraft inbound to the Tulsa terminal area.

NOTE: GRABE Transition: ATC assigned.

NOTE: OKMULGEE Transition: For all aircraft overflying OKM VOR/DME proceeding on J181 to BDF to destinations in the Chicago terminal area and north.

NOTE: TULSA Transition: For all aircraft overflying TUL VORTAC.

NOTE: WILL ROGERS Transition: For all aircraft overflying IRW VORTAC.

SC-2, 11 JUN 2026 to 09 JUL 2026

SC-2, 11 JUN 2026 to 09 JUL 2026