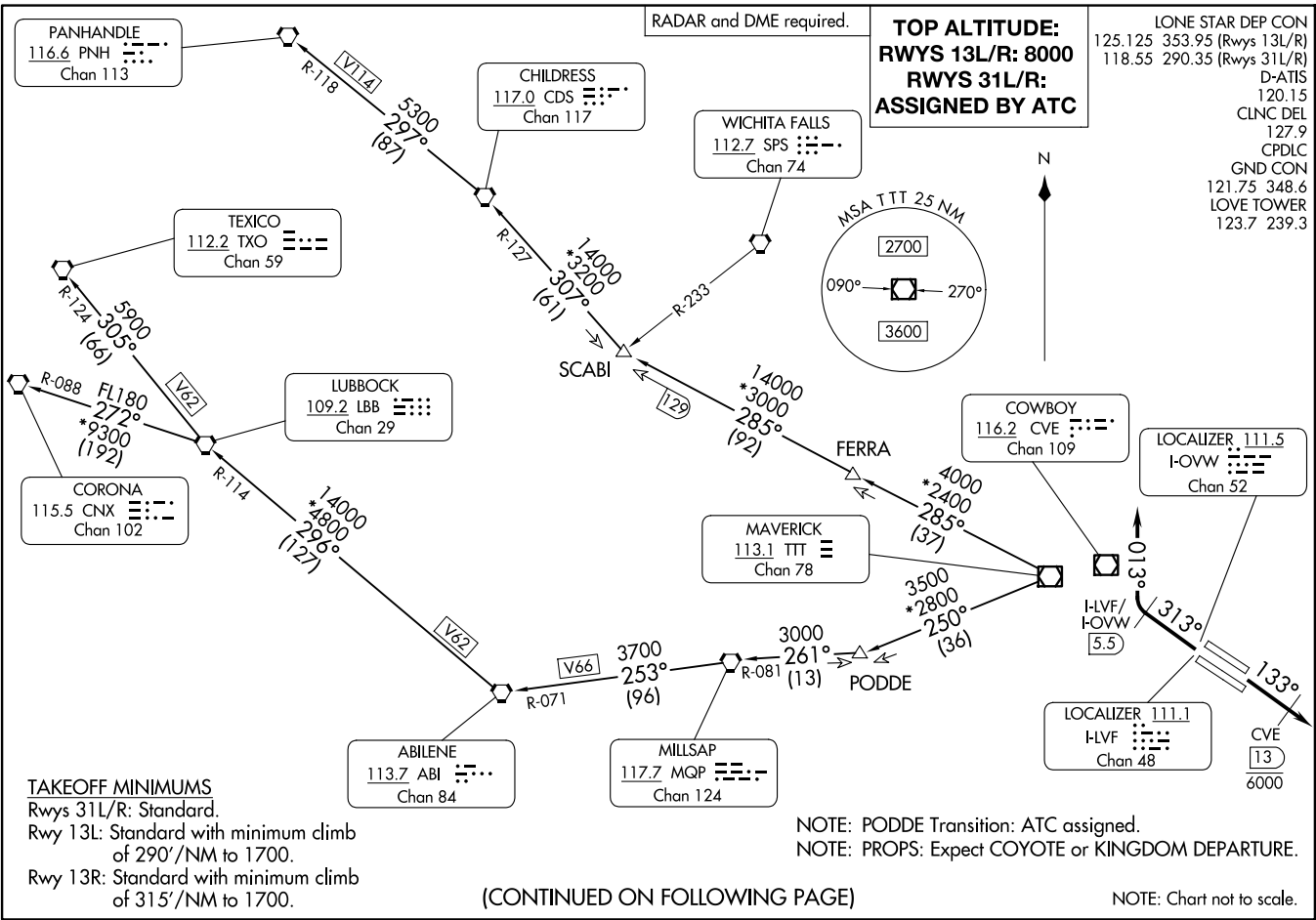


WORTH ONE DEPARTURE
(WORTH1.TTT) 25JAN24

DALLAS, TEXAS
DALLAS LOVE FLD (DAL)



(WORTH1.TTT) 24305
WORTH ONE DEPARTURE

AL-106 (FAA)

DALLAS LOVE FLD (DAL)
DALLAS, TEXAS

(CONTINUED ON FOLLOWING PAGE)

WORTH ONE DEPARTURE



DEPARTURE ROUTE DESCRIPTION

TAKEOFF RUNWAYS 13L/R: Climb on heading 133°, cross CVE 13 DME at or below 6000, then maintain 8000 for RADAR vectors to appropriate route and expect filed altitude 10 minutes after departure.

TAKEOFF RUNWAYS 31L/R: Climb on heading 313° until the I-LVF 5.5 DME or I-OVW 5.5 DME, then right turn heading 013° for RADAR vectors appropriate route, maintain ATC assigned altitude and expect filed altitude 10 minutes after departure.

ABILENE TRANSITION (WORTH1.ABI): From over TTT VOR/DME on TTT R-250 to PODDE, then on MQP R-081 to MQP VORTAC, then on MQP R-253 and ABI R-071 to ABI VORTAC.

CHILDRESS TRANSITION (WORTH1.CDS): From over TTT VOR/DME on TTT R-285 to SCABI, then on CDS R-127 to CDS VORTAC.

CORONA TRANSITION (WORTH1.CNX): From over TTT VOR/DME on TTT R-250 to PODDE, then on MQP R-081 to MQP VORTAC, then on MQP R-253 and ABI R-071 to ABI VORTAC, then on ABI R-296 and LBB R-114 to LBB VORTAC, then on LBB R-272 and CNX R-088 to CNX VORTAC.

LUBBOCK TRANSITION (WORTH1.LBB): From over TTT VOR/DME on TTT R-250 to PODDE, then on MQP R-081 to MQP VORTAC, then on MQP R-253 and ABI R-071 to ABI VORTAC, then on ABI R-296 and LBB R-114 to LBB VORTAC.

PANHANDLE TRANSITION (WORTH1.PNH): From over TTT VOR/DME on TTT R-285 to SCABI, then on CDS R-127 to CDS VORTAC, then on CDS R-297 and PNH R-118 to PNH VORTAC.

PODDE TRANSITION (WORTH1.PODDE): From over TTT VOR/DME on TTT R-250 to PODDE.

TEXICO TRANSITION (WORTH1.TXO): From over TTT VOR/DME on TTT R-250 to PODDE, then on MQP R-081 to MQP VORTAC, then on MQP R-253 and ABI R-071 to ABI VORTAC, then on ABI R-296 and LBB R-114 to LBB VORTAC, then on LBB R-305 and TXO R-124 to TXO VORTAC.

SC-2, 11 JUN 2026 to 09 JUL 2026

SC-2, 11 JUN 2026 to 09 JUL 2026

WORTH ONE DEPARTURE