

(ROYES7.ROYES) 24193


# ROYES SEVEN DEPARTURE

AL-110

DAYTONA BEACH INTL (DAB)  
DAYTONA BEACH, FLORIDA

ATIS  
132.875  
CLNC DEL  
119.3  
GND CON  
121.9 348.6  
DAYTONA TOWER  
120.7 257.8  
DAYTONA DEP CON  
118.85 353.825

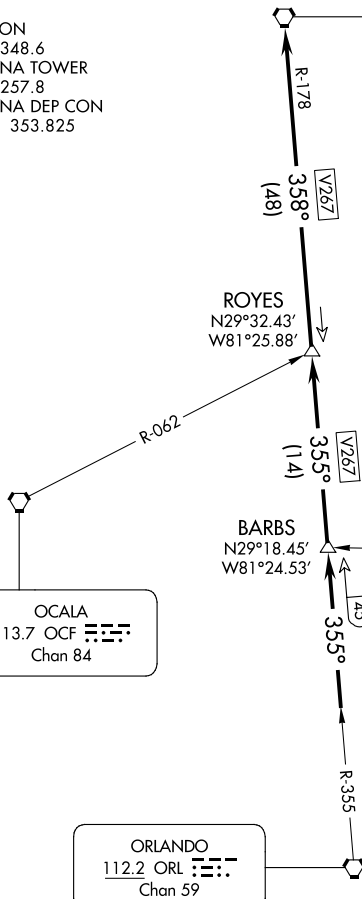
**TOP ALTITUDE:  
4000**


CRAIG  
114.5 CRG   
Chan 92

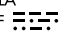
### TAKEOFF MINIMUMS

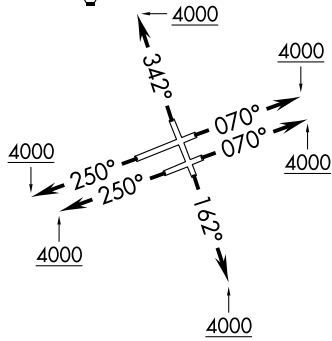
Rwys 7L, 7R, 16, 25L, 25R, 34: Standard.

NOTE: RADAR required.



ORMOND BEACH  
112.6 OMN   
Chan 73

OCALA  
113.7 OCF   
Chan 84



NOTE: Chart not to scale.

### DEPARTURE ROUTE DESCRIPTION

- TAKEOFF RUNWAY 7L: Climb heading 070° to 4000 or as assigned by ATC, thence . . .
- TAKEOFF RUNWAY 7R: Climb heading 070° to 4000 or as assigned by ATC, thence . . .
- TAKEOFF RUNWAY 16: Climb heading 162° to 4000 or as assigned by ATC, thence . . .
- TAKEOFF RUNWAY 25L: Climb heading 250° to 4000 or as assigned by ATC, thence . . .
- TAKEOFF RUNWAY 25R: Climb heading 250° to 4000 or as assigned by ATC, thence . . .
- TAKEOFF RUNWAY 34: Climb heading 342° to 4000 or as assigned by ATC, thence . . .

. . . Expect vectors to intercept CRG R-178 to CRG VORTAC, then via assigned route.  
Expect clearance to filed altitude/flight level ten (10) minutes after departure.

# ROYES SEVEN DEPARTURE

(ROYES7.ROYES) 25JUN15

DAYTONA BEACH, FLORIDA  
DAYTONA BEACH INTL (DAB)

SE-3, 11 JUN 2026 to 09 JUL 2026

SE-3, 11 JUN 2026 to 09 JUL 2026