

WAAS CH 61124 W35A	APP CRS 349°	Rwy Ldg TDZE Apt Elev	6065 4755 4760
--	------------------------	-----------------------------	---

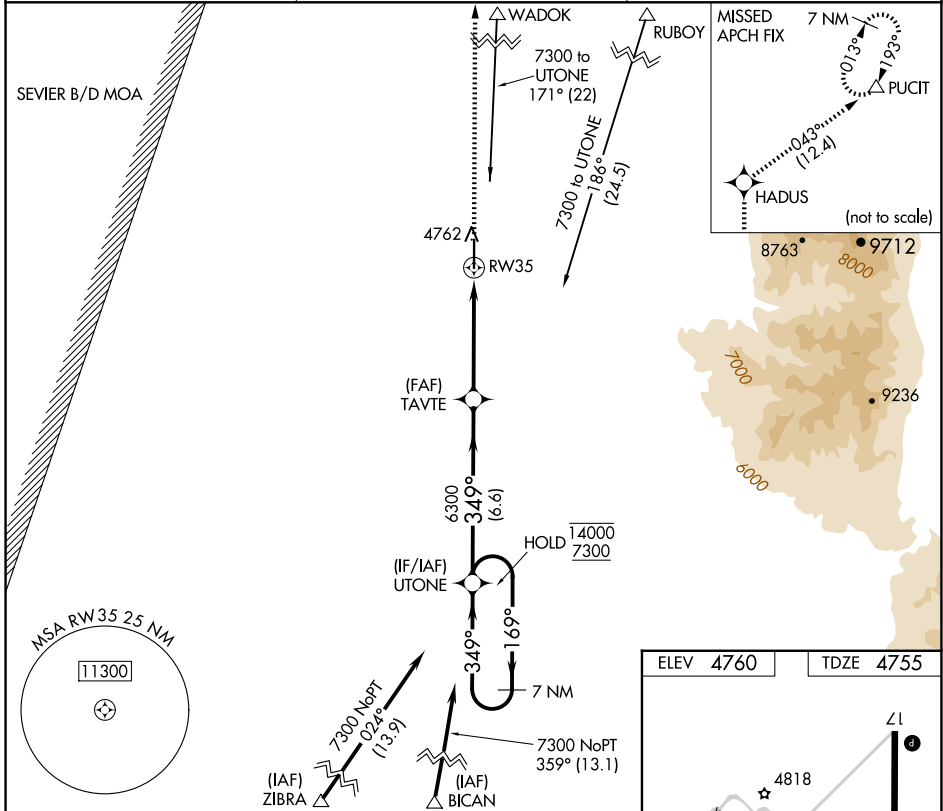
RNAV (GPS) RWY 35

DELTA MUNI (DTA)

RNP APCH-GPS. MISSED APPROACH: Climb to 10300 direct HADUS and on track 043° to PUCIT and hold.

▼ For uncompensated Baro-VNAV systems, LNAV/VNAV NA below -24°C or above 54°C.

AWOS-3 127.75	SALT LAKE CENTER 127.825 239.025	UNICOM 122.8 (CTAF) 0
-------------------------	--	---------------------------------



SW-4, 11 JUN 2026 to 09 JUL 2026

SW-4, 11 JUN 2026 to 09 JUL 2026

7 NM Holding Pattern		UTONE	TAVTE	10300 HADUS	PUCIT
14000 ← 169°		7300 → 349°	6300	0.9 NM to RW35	tr 043°
GP 3.00° TCH 42		6.6 NM	3.8 NM	0.9	
CATEGORY	A	B	C	D	
LPV DA		4955-1	200 (200-1)		
LNAV/VNAV DA		5005-1	250 (300-1)		
LNAV MDA		5080-1	325 (400-1)		

