

# DES MOINES TWO DEPARTURE

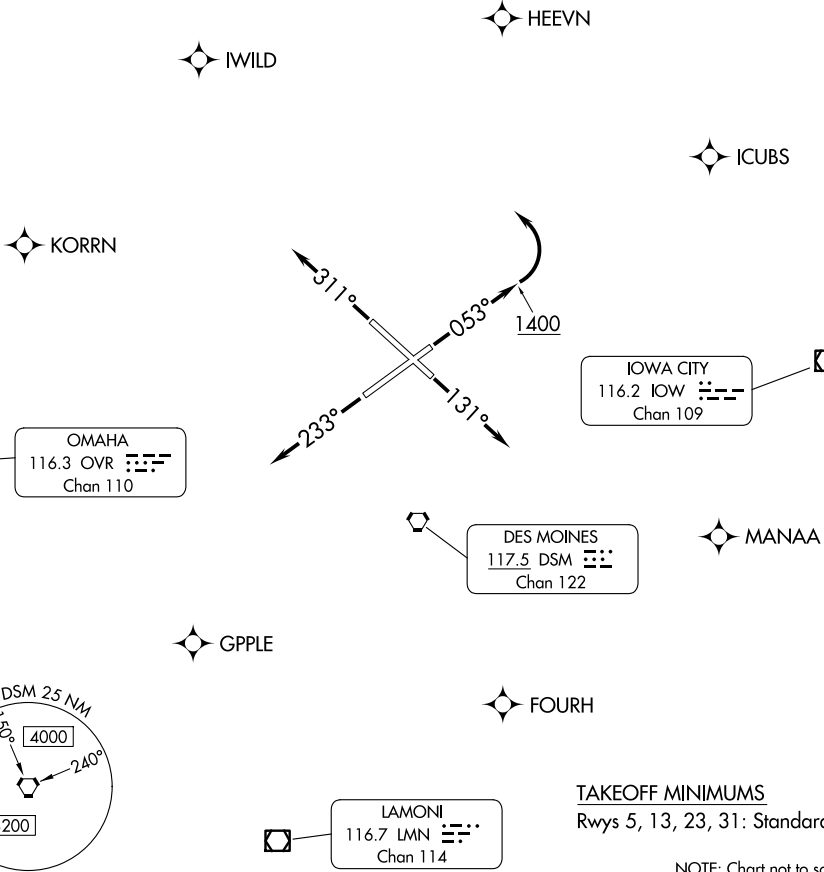
AL-117 (FAA)

DES MOINES INTL (DSM)  
DES MOINES, IOWA

**TOP ALTITUDE:  
5000**

For waypoints: RNAV 1 - GPS.  
RADAR required.

DES MOINES DEP CON  
123.9 307.15  
CLNC DEL  
134.15 317.55



**TAKEOFF MINIMUMS**  
Rwys 5, 13, 23, 31: Standard.

NOTE: Chart not to scale.

## DEPARTURE ROUTE DESCRIPTION

**TAKEOFF RUNWAY 5:** Climb on heading 053° to 1400 before turning left for RADAR vectors to assigned route/fix, thence . . . .

**TAKEOFF RUNWAY 13:** Climb on heading 131° for RADAR vectors to assigned route/fix, thence . . . .

**TAKEOFF RUNWAY 23:** Climb on heading 233° for RADAR vectors to assigned route/fix, thence . . . .

**TAKEOFF RUNWAY 31:** Climb on heading 311° for RADAR vectors to assigned route/fix, thence . . . .

. . . . maintain 5000. Expect clearance to filed altitude 10 minutes after departure.

# DES MOINES TWO DEPARTURE

NC-3, 11 JUN 2026 to 09 JUL 2026

NC-3, 11 JUN 2026 to 09 JUL 2026