

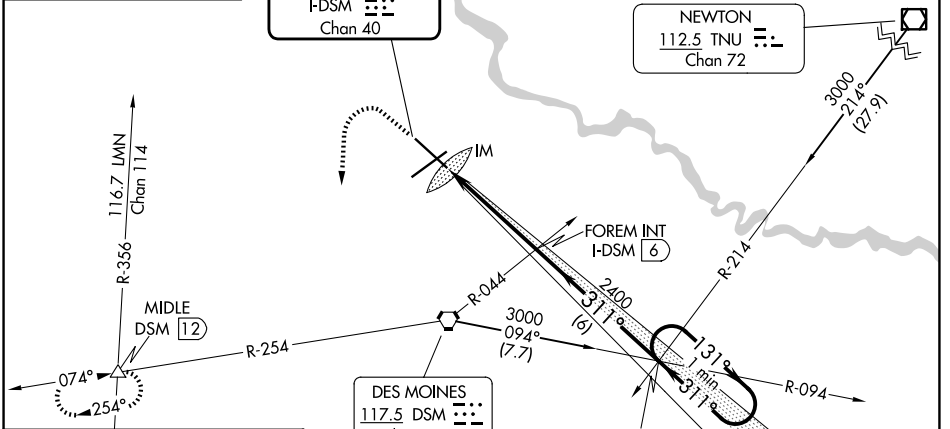
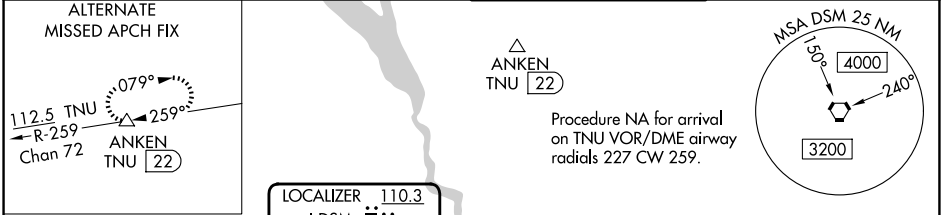
LOC/DME I-DSM 110.3 Chan 40	APP CRS 311°	Rwy Ldg TDZE Apt Elev 9001 958 958
--	------------------------	--

ILS RWY 31 (CAT II & III)

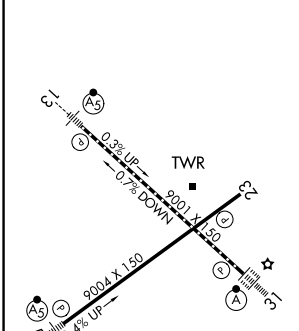
DES MOINES INTL (DSM)

ATIS 119.55		DES MOINES APP CON 123.9 307.15	DES MOINES TOWER 118.3 257.8	GND CON 121.9 348.6
--------------------	--	--	-------------------------------------	----------------------------

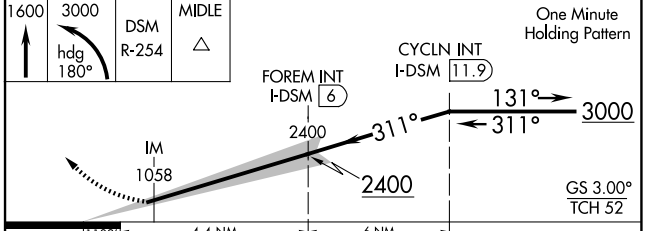
ALSF-2 	MISSED APPROACH: Climb to 1600 then climbing left turn to 3000 on heading 180° and on DSM VORTAC R-254 to MIDDLE INT/12 DME and hold.
-------------------	--



ELEV 958	D	TDZE 958
----------	----------	----------



Procedure NA for arrival on DSM VORTAC airway radials 042 CW 141.



CATEGORY	A	B	C	D
S-ILS 31	CAT II RA 101/12		100 DA 1058	
S-ILS 31	CAT III RVR 06			

CATEGORY II & III ILS - SPECIAL AIRCREW & AIRCRAFT CERTIFICATION REQUIRED

REIL Rwy 5 and 23
TDZ/CL Rwy 31
HIRL Rwy 13-31 and 5-23

NC-3, 11 JUN 2026 to 09 JUL 2026

NC-3, 11 JUN 2026 to 09 JUL 2026