

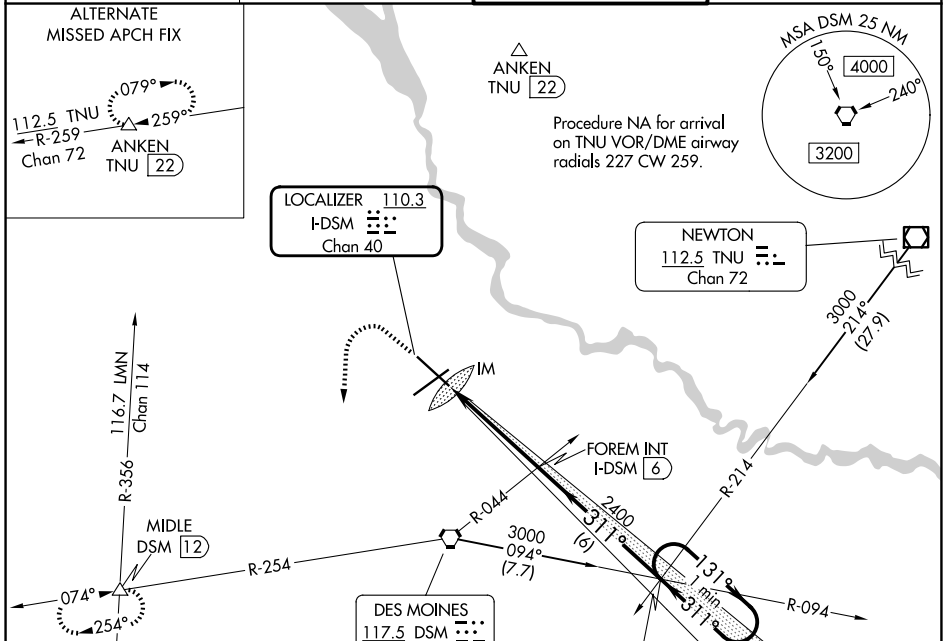
LOC/DME I-DSM 110.3 Chan 40	APP CRS 311°	Rwy Ldg TDZE Apt Elev	9001 958 958
---	------------------------	-----------------------------	---

ILS or LOC RWY 31

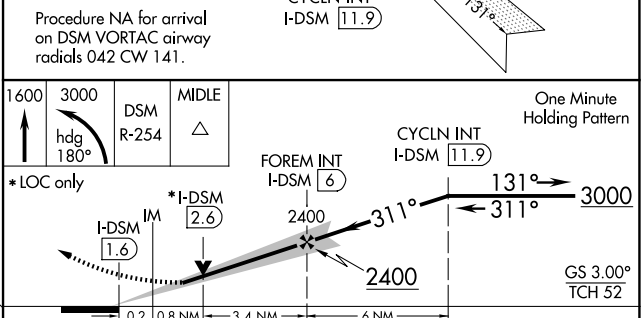
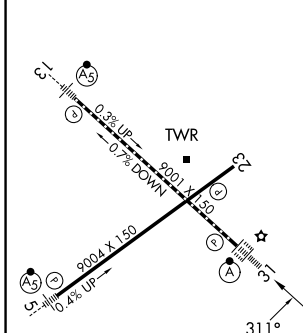
DES MOINES INTL (DSM)

<p>For inop ALS, increase S-ILS 31 Cat E visibility to RVR 4000 and S-LOC 31 Cat E visibility to RVR 6000.</p>	<p>ALSF-2</p>	<p>MISSED APPROACH: Climb to 1600 then climbing left turn to 3000 on heading 180° and on DSM VORTAC R-254 to MIDDLE INT/12 DME and hold.</p>
--	---------------	--

<p>ATIS 119.55</p>	<p>DES MOINES APP CON 123.9 307.15</p>	<p>DES MOINES TOWER 118.3 257.8</p>	<p>GND CON 121.9 348.6</p>
-------------------------------	---	--	---------------------------------------



ELEV 958	D	TDZE 958
----------	----------	----------



REIL Rwy 5 and 23 TDZ/CL Rwy 31 HIRL Rwy 13-31 and 5-23 FAF to MAP 4.4 NM					
Knots	60	90	120	150	180
Min:Sec	4:24	2:56	2:12	1:46	1:28
CATEGORY	A	B	C	D	E
S-ILS 31	1158/18 200 (200-½)				
S-LOC 31	1340/24	382 (400-½)	1340/35 382 (400-¾)		
CIRCLING	1420-1	462 (500-1)	1600-1½	1760-2½	1760-2¾ 642 (700-1½) 802 (900-2½) 802 (900-2¾)

NC-3, 11 JUN 2026 to 09 JUL 2026

NC-3, 11 JUN 2026 to 09 JUL 2026