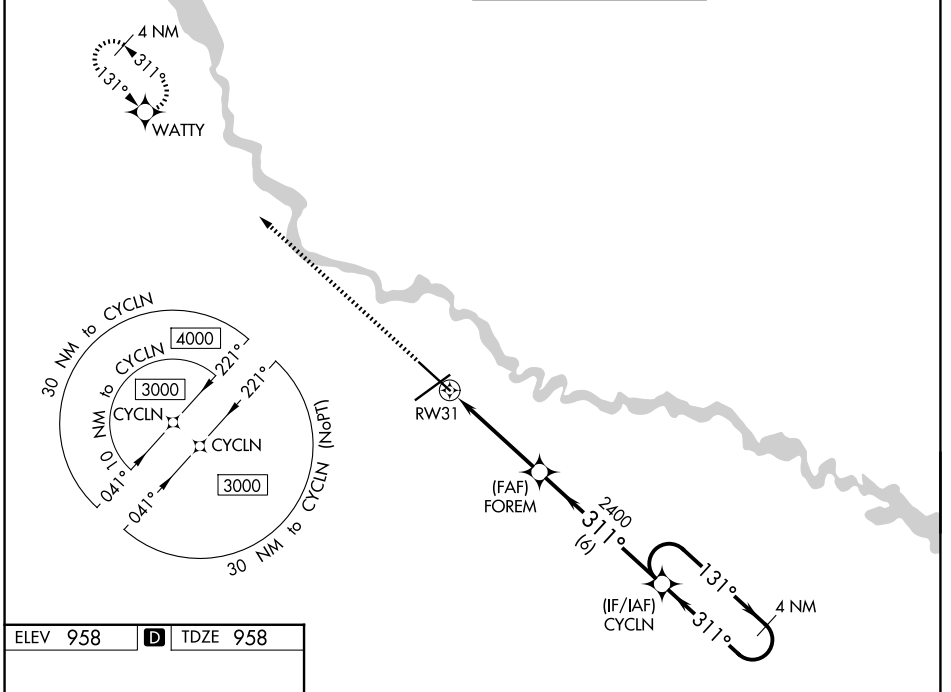


WAAS CH <b>78002</b> <b>W31A</b>	APP CRS <b>311°</b>	Rwy Ldg TDZE Apt Elev	<b>9001</b> <b>958</b> <b>958</b>
--	------------------------	-----------------------------	---

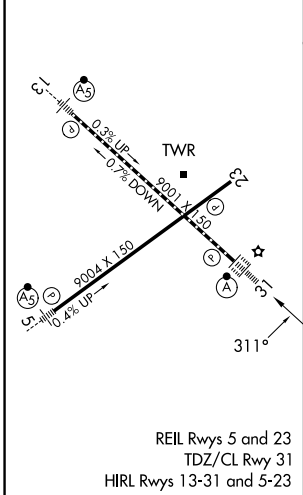
# RNAV (GPS) RWY 31

DES MOINES INTL (DSM)

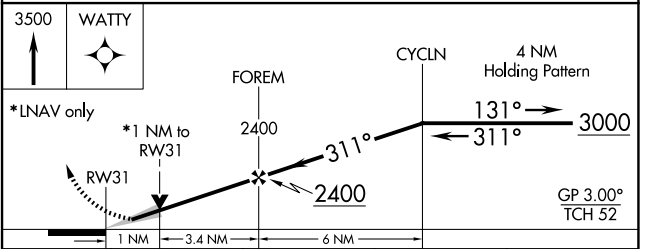
RNP APCH - GPS.		ALSF-2	MISSED APPROACH: Climb to 3500 direct WATTY and hold.
<p><b>▼</b> For uncompensated Baro-VNAV systems, LNAV/VNAV NA below -20° or above 54°. For inop ALS, increase LNAV Cats C/D visibility to RVR 5500. Baro-VNAV and VDP NA when using Ankeny Rgnl altimeter setting.</p>			
ATIS <b>119.55</b>	DES MOINES APP CON <b>123.9 307.15</b>	DES MOINES TOWER <b>118.3 257.8</b>	GND CON <b>121.9 348.6</b>



ELEV 958 **D** TDZE 958



REIL Rwy 5 and 23  
TDZ/CL Rwy 31  
HIRL Rwy 13-31 and 5-23



CATEGORY	A	B	C	D
LPV DA		1158/18	200 (200-½)	
LNAV/ VNAV DA		1354/35	396 (400-⅙)	
LNAV MDA	1320/24	362 (400-½)	1320/35	362 (400-⅙)
CIRCLING	1420-1	462 (500-1)	1600-1¾ 642 (700-1¾)	1760-2½ 802 (900-2½)

NC-3, 11 JUN 2026 to 09 JUL 2026

NC-3, 11 JUN 2026 to 09 JUL 2026