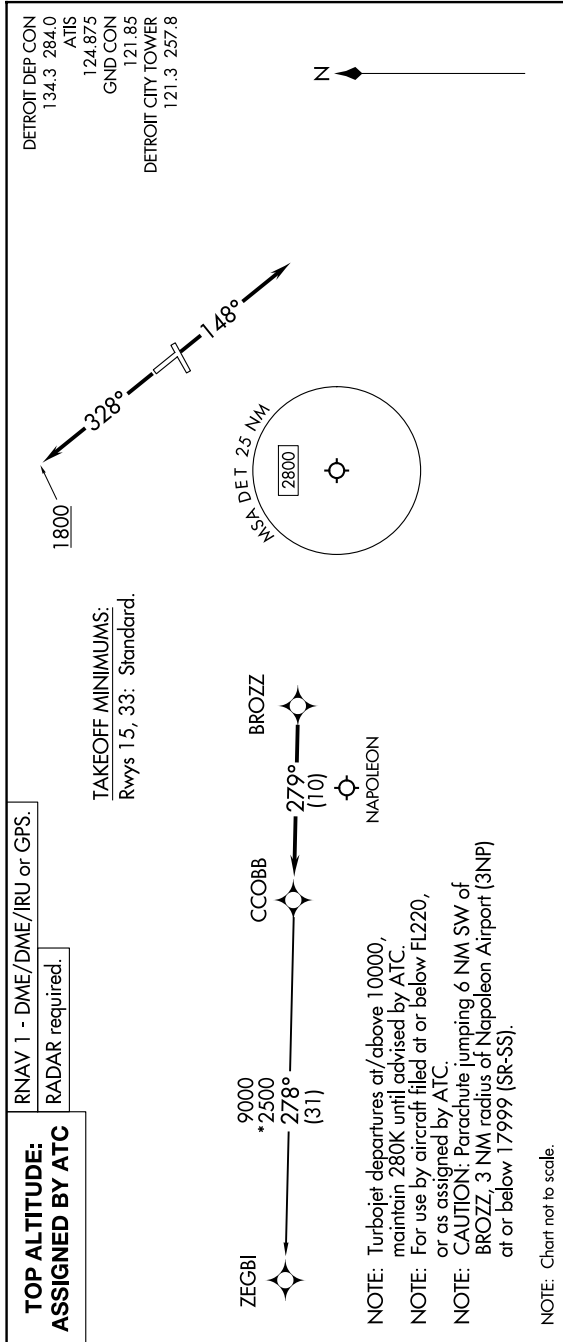


EC-1, 11 JUN 2026 to 09 JUL 2026



DEPARTURE ROUTE DESCRIPTION

TAKEOFF RUNWAY 15: Climb on heading 148° or as assigned by ATC, thence...
TAKEOFF RUNWAY 33: Climb on heading 328° to 1800 then as assigned by ATC, thence....
for RADAR vectors to BROZZ, then on track 279° to CCOBB, then on (transition).
 Maintain ATC assigned altitude, expect filed altitude 10 minutes after departure.

ZEGBI TRANSITION (CCOBB3.ZEGBI):

EC-1, 11 JUN 2026 to 09 JUL 2026