

RADAR required. DME required.

TOP ALTITUDE:
3000

(METRO4, DXO) 24249
METRO FOUR DEPARTURE

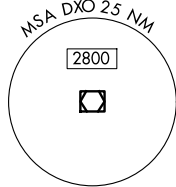
AL-1.18 (FAA)

COLEMAN A YOUNG MUNI (DET)
DETROIT, MICHIGAN

ATIS 124.875
GND CON
121.85
DETROIT CITY TOWER
121.3 257.8

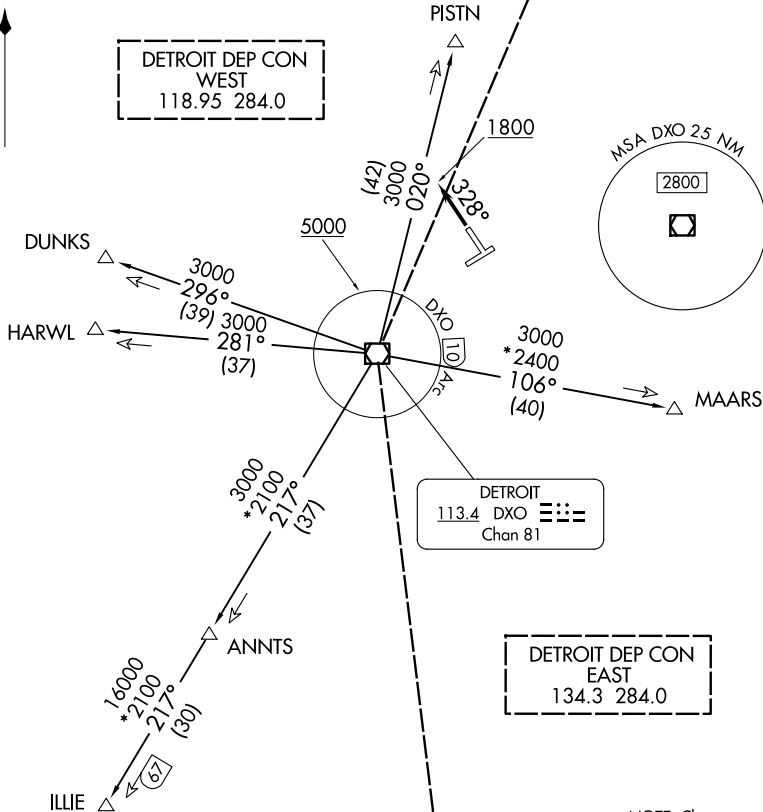


DETROIT DEP CON
WEST
118.95 284.0



TAKEOFF MINIMUMS
Rwys 15, 33: Standard.

NOTE: For use by non-RNAV equipped aircraft only.
NOTE: When using this departure, file the appropriate depicted departure fix and route. Aircraft over HARWL must file FL220 and below. Aircraft landing Cleveland (CLE) must file MAARS transition. Turbojet departures at/above 10000, maintain 280K until advised by ATC. If unable, advise ATC prior to departure.



DETROIT
113.4 DXO
Chan 81

DETROIT DEP CON
EAST
134.3 284.0

NOTE: Chart not to scale.

SPECIAL INSTRUCTIONS:

For appropriate departure control frequency, see graphic. Use frequency depicted within the sector where first navaid/fix for your route is located (sectors indicated by dashed lines; frequencies in dashed box within).

(CONTINUED ON FOLLOWING PAGE)

METRO FOUR DEPARTURE
(METRO4, DXO) 05SEP24

DETROIT, MICHIGAN
COLEMAN A YOUNG MUNI (DET)



DEPARTURE ROUTE DESCRIPTION

TAKEOFF RUNWAY 15: Climb on assigned heading, thence....

TAKEOFF RUNWAY 33: Climb heading 328° to 1800, then on assigned heading, thence....

.....maintain ATC assigned altitude for RADAR vectors to intercept filed/assigned transition or enroute fix/navaid. When ATC assigned altitude is at or above 5000, cross DXO 10 DME Arc at or above 5000 for noise abatement. If unable to comply, advise ATC prior to departure. Expect clearance to filed altitude/flight level within ten (10) minutes after departure.

DUNKS TRANSITION (METRO4.DUNKS): From over DXO VOR/DME on DXO R-296 to DUNKS.

HARWL TRANSITION (METRO4.HARWL): From over DXO VOR/DME on DXO R-281 to HARWL.

ILLIE TRANSITION (METRO4.ILLIE): From over DXO VOR/DME on DXO R-217 to ILLIE.

MAARS TRANSITION (METRO4.MAARS): From over DXO VOR/DME on DXO R-106 to MAARS.

PISTN TRANSITION (METRO4.PISTN): From over DXO VOR/DME on DXO R-020 to PISTN.

EC-1, 11 JUN 2026 to 09 JUL 2026

EC-1, 11 JUN 2026 to 09 JUL 2026