

(TRMML4.TRMML) 24137

# TRMML FOUR DEPARTURE (RNAV)

AL-118 (FAA)

COLEMAN A YOUNG MUNI (DET)

DETROIT, MICHIGAN

**TOP ALTITUDE:  
ASSIGNED BY ATC**

RNAV 1 - DME/DME/IRU or GPS.

RADAR required.

DETROIT DEP CON

134.3 284.0

ATIS

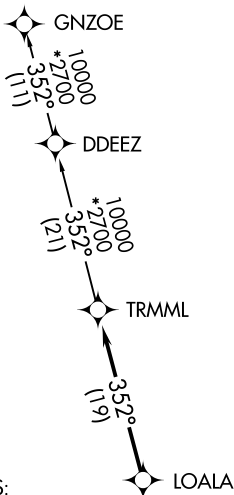
124.875

GND CON

121.85

DETROIT CITY TOWER

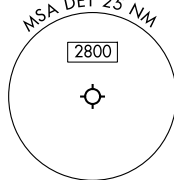
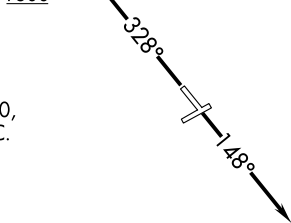
121.3 257.8



TAKEOFF MINIMUMS:  
Rwys 15, 33: Standard.

1800

NOTE: Turbojet departures at/above 10000,  
maintain 280K until advised by ATC.



NOTE: Chart not to scale.

## DEPARTURE ROUTE DESCRIPTION

TAKEOFF RUNWAY 15: Climb on heading 148° or as assigned by ATC,  
thence....

TAKEOFF RUNWAY 33: Climb on heading 328° to 1800 then as assigned by ATC,  
thence....

...for RADAR vectors to LOALA, then on track 352° to TRMML, then on (transition).  
Maintain ATC assigned altitude, expect filed altitude 10 minutes after departure.

GNZOE TRANSITION (TRMML4.GNZOE):

# TRMML FOUR DEPARTURE (RNAV)

(TRMML4.TRMML) 16MAY24

DETROIT, MICHIGAN

COLEMAN A YOUNG MUNI (DET)

EC-1, 11 JUN 2026 to 09 JUL 2026

EC-1, 11 JUN 2026 to 09 JUL 2026