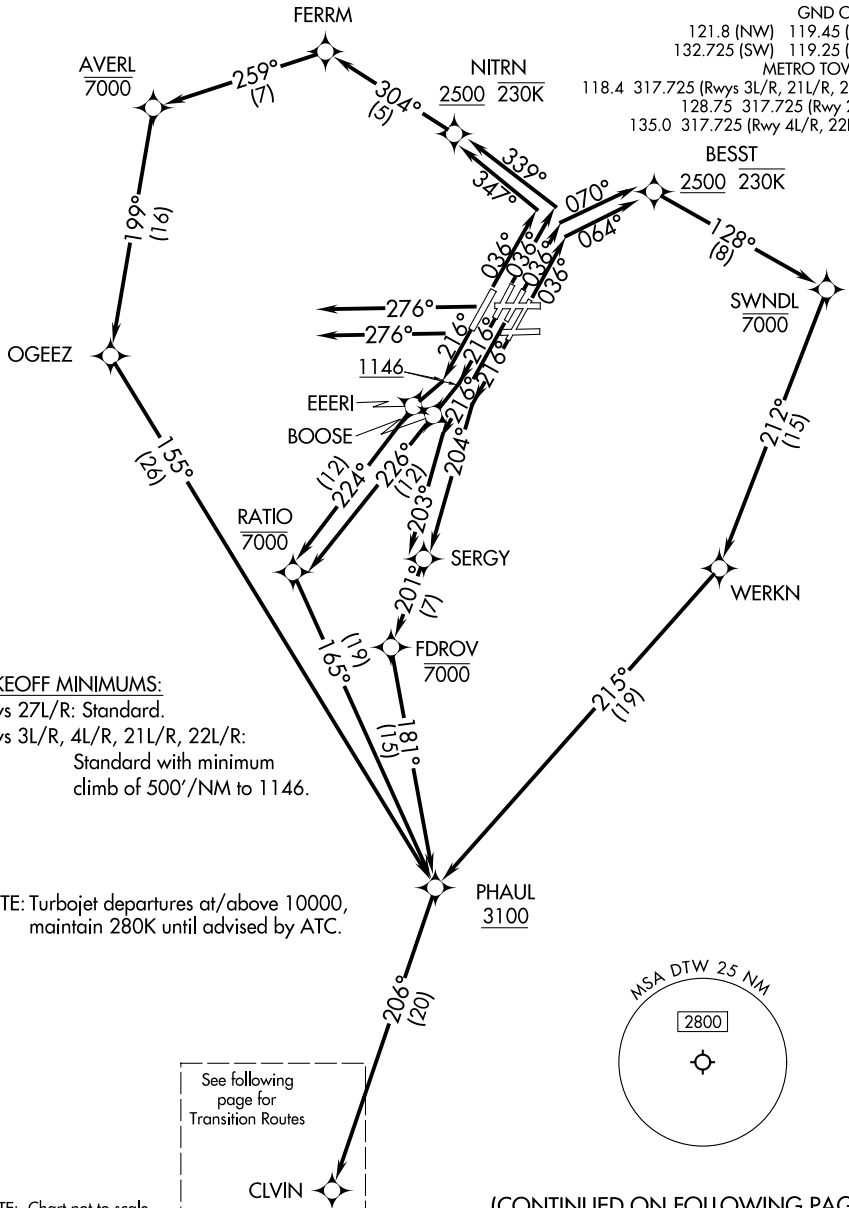


CLVIN THREE DEPARTURE (RNAV) Departure Routes

TOP ALTITUDE:
17000

RNAV 1 - DME/DME/IRU or GPS.
RADAR required.

DETROIT DEP CON
125.525 284.0 (Rwys 4L/R, 22L/R)
132.025 284.0 (Rwys 3L/R, 21L/R, 27R)
D-ATIS 118.125
CLNC DEL 120.65
CPDLC
GND CON
121.8 (NW) 119.45 (NE)
132.725 (SW) 119.25 (SE)
METRO TOWER
118.4 317.725 (Rwys 3L/R, 21L/R, 27R)
128.75 317.725 (Rwy 27L)
135.0 317.725 (Rwy 4L/R, 22L/R)



TAKEOFF MINIMUMS:

Rwys 27L/R: Standard.

Rwys 3L/R, 4L/R, 21L/R, 22L/R:

Standard with minimum
climb of 500'/NM to 1146.

NOTE: Turbojet departures at/above 10000,
maintain 280K until advised by ATC.

See following
page for
Transition Routes

NOTE: Chart not to scale.

(CONTINUED ON FOLLOWING PAGE)

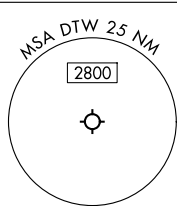
EC-1, 11 JUN 2026 to 09 JUL 2026

EC-1, 11 JUN 2026 to 09 JUL 2026

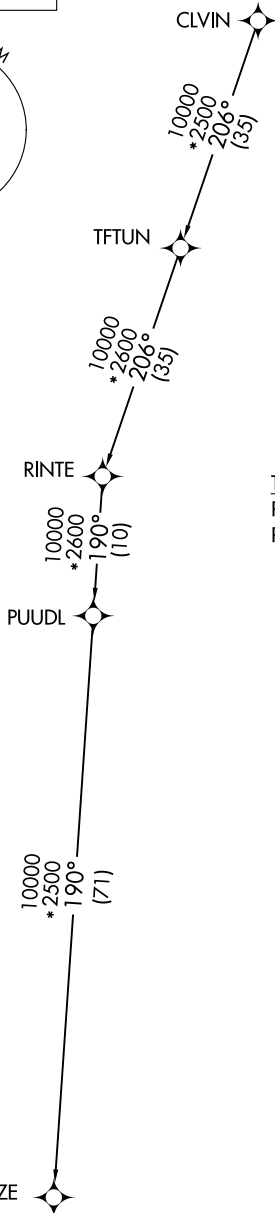
CLVIN THREE DEPARTURE (RNAV) Transition Routes

**TOP ALTITUDE:
17000**

RNAV 1 - DME/DME/IRU or GPS.
RADAR required.



- DETROIT DEP CON
- 125.525 284.0 (Rwys 4L/R, 22L/R)
- 132.025 284.0 (Rwys 3L/R, 21L/R, 27L/R)
- D-ATIS 118.125
- CLNC DEL 120.65
- CPDLC
- GND CON
- 121.8 (NW) 119.45 (NE)
- 132.725 (SW) 119.25 (SE)
- METRO TOWER
- 118.4 317.725 (Rwys 3L/R, 21L/R, 27R)
- 128.75 317.725 (Rwy 27L)
- 135.0 317.725 (Rwy 4L/R, 22L/R)



TAKEOFF MINIMUMS:
 Rwys 27L/R: Standard.
 Rwys 3L/R, 4L/R, 21L/R, 22L/R:
 Standard with minimum climb of
 500'/NM to 1146.

NOTE: Turbojet departures at/above 10000,
 maintain 280K until advised by ATC.

NOTE: Chart not to scale.

(CONTINUED ON FOLLOWING PAGE)

EC-1, 11 JUN 2026 to 09 JUL 2026

EC-1, 11 JUN 2026 to 09 JUL 2026



DEPARTURE ROUTE DESCRIPTION

SEE ADDITIONAL REQUIREMENTS ON AAUP

TAKEOFF RUNWAY 3L: Climb on heading 036° to intercept course 070° to cross BESST at or above 2500 and at or below 230K, then on track 128° to cross SWNDL at or below 7000, then on track 212° to WERKN, then on track 215° to cross PHAUL at or above 3100, thence....

TAKEOFF RUNWAY 3R: Climb on heading 036° to intercept course 064° to cross BESST at or above 2500 and at or below 230K, then on track 128° to cross SWNDL at or below 7000, then on track 212° to WERKN, then on track 215° to cross PHAUL at or above 3100, thence....

TAKEOFF RUNWAY 4L: Climb on heading 036° to intercept course 347° to cross NITRN at or above 2500 and at or below 230K, then on track 304° to FERRM, then on track 259° to cross AVERL at or below 7000, then on track 199° to OGEEZ, then on track 155° to cross PHAUL at or above 3100, thence....

TAKEOFF RUNWAY 4R: Climb on heading 036° to intercept course 339° to cross NITRN at or above 2500 and at or below 230K, then on track 304° to FERRM, then on track 259° to cross AVERL at or below 7000, then on track 199° to OGEEZ, then on track 155° to cross PHAUL at or above 3100, thence....

TAKEOFF RUNWAY 21L: Climb on heading 216° to intercept course 204° to SERGY, then on track 201° to cross FDROV at or below 7000, then on track 181° to cross PHAUL at or above 3100, thence....

TAKEOFF RUNWAY 21R: Climb on heading 216° to intercept course 203° to SERGY, then on track 201° to cross FDROV at or below 7000, then on track 181° to cross PHAUL at or above 3100, thence....

TAKEOFF RUNWAY 22L: Climb on heading 216° to 1146, then direct BOOSE, then on track 226° to cross RATIO at or below 7000, then on track 165° to cross PHAUL at or above 3100, thence....

TAKEOFF RUNWAY 22R: Climb on heading 216° to 1146, then direct EEERI, then on track 224° to cross RATIO at or below 7000, then on track 165° to cross PHAUL at or above 3100, thence....

TAKEOFF RUNWAYS 27L/R: Climb on heading 276° or as assigned by ATC, for RADAR vectors to cross PHAUL at or above 3100, thence....

....on track 206° to CLVIN, then on (transition). Maintain 17000, expect filed altitude 10 minutes after departure.

STAZE TRANSITION (CLVIN3.STAZE):

EC-1, 11 JUN 2026 to 09 JUL 2026

EC-1, 11 JUN 2026 to 09 JUL 2026