

LOC/DME I-DWC 110.7 Chan 44	APP CRS 216°	Rwy Ldg TDZE Apt Elev	12003 637 645
---	------------------------	-----------------------------	--

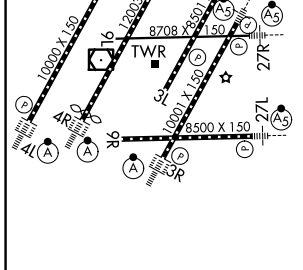
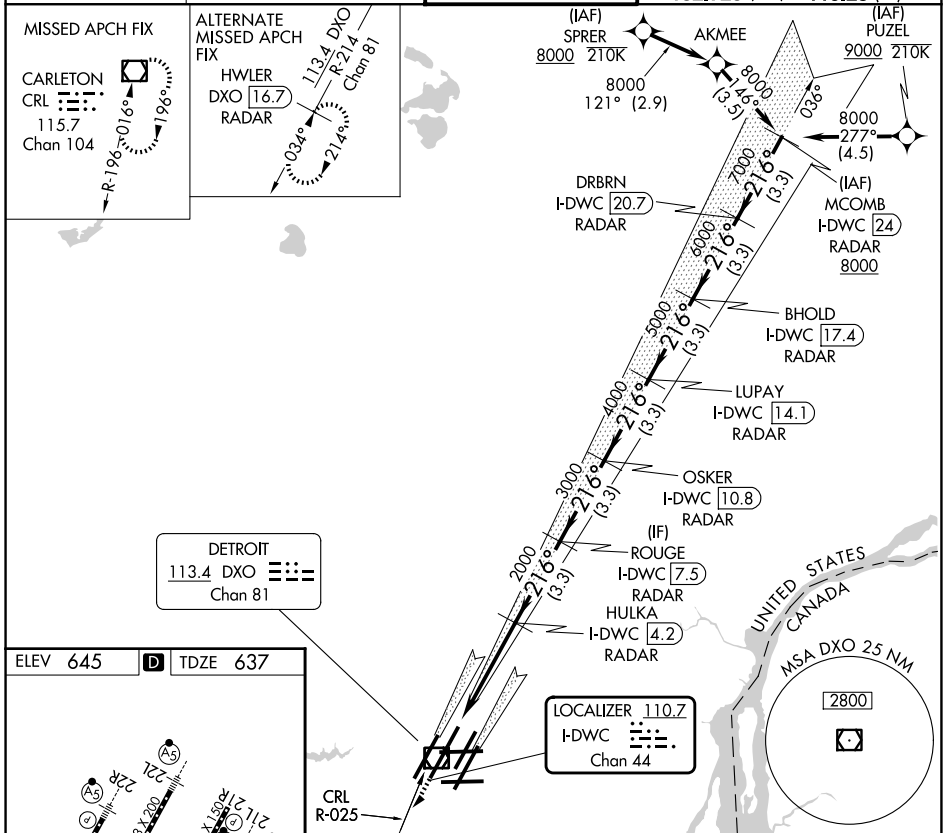
ILS RWY 22L (SA CAT I)
DETROIT METRO WAYNE COUNTY (DTW)

DME or RADAR required. RNAV 1-DME/DME/IRU or RADAR required for procedure entry.

MALS MISSED APPROACH: Climb to 4000 on heading 216° and CRL VOR/DME R-025 to CRL VOR/DME and hold, continue climb-in-hold to 4000.

Simultaneous approach authorized.
Requires specific OPSPEC, MSPEC, or LOA approval and use of HUD to DH.

D-ATIS 133.675	DETROIT APP CON 124.05 284.0	METRO TOWER 128.125 317.725	GND CON 121.8 (NW) 119.45 (NE) 132.725 (SW) 119.25 (SE)
--------------------------	--	---------------------------------------	---



4000 hdg 216°	CRL R-025	CRL	OSKER I-DWC 10.8 RADAR	LUPAY I-DWC 14.1 RADAR	BHOLD I-DWC 17.4 RADAR	DRBRN I-DWC 20.7 RADAR	MCOMB I-DWC 24 RADAR
	HULKA I-DWC 4.2 RADAR	ROUGE I-DWC 7.5 RADAR					
<p>2000 3000 4000 5000 6000 7000</p> <p>GS 2.85° TCH 60</p>							
CATEGORY A		CATEGORY B		CATEGORY C		CATEGORY D	
S-ILS 22L		SA CAT I		RA 148/14		150 DA 787	

TDZL/RCLS Rwy 3R, 4L, 4R and 22R
REIL Rwy 3L, 9L, 9R and 21R
HIRL all Rwy

SA CATEGORY I ILS- SPECIAL AIRCREW & AIRCRAFT CERTIFICATION REQUIRED

EC-1, 11 JUN 2026 to 09 JUL 2026

EC-1, 11 JUN 2026 to 09 JUL 2026