

# ILS PRM RWY 22L (CLOSE PARALLEL)

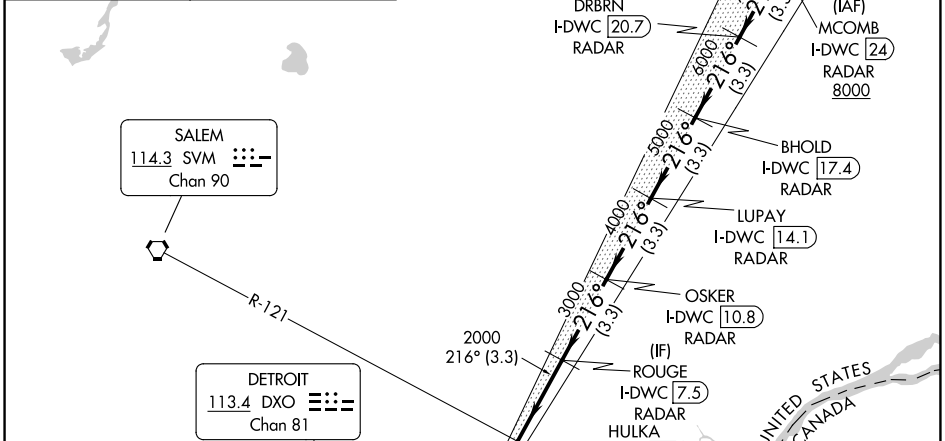
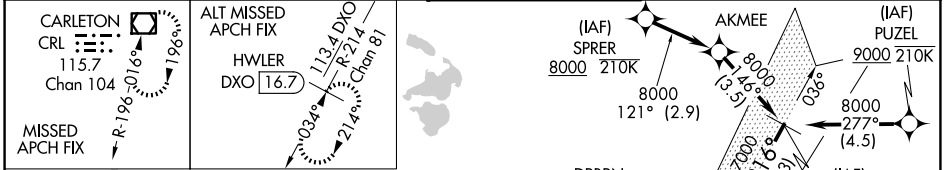
DETROIT METRO WAYNE COUNTY (DTW)

LOC/DME I-DWC <b>110.7</b> Chan <b>44</b>	APP CRS <b>216°</b>	Rwy Ldg TDZE Apt Elev	<b>12003</b> <b>637</b> <b>645</b>
---	------------------------	-----------------------------	--

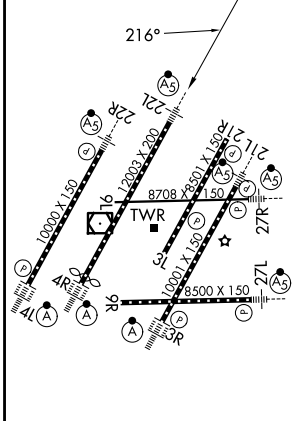
RNAV 1-GPS.  
RNAV 1-DME/DME/IRU or RADAR required for procedure entry. DME or RADAR required.  
Simultaneous approach authorized. Use of FD or AP required during simultaneous operations. Dual VHF comm required. See additional requirements on AAUP. Procedure NA when glide slope not available.  
\*RVR 1800 authorized with use of FD or AP or HUD to DA.

MALS R  
MISSED APPROACH:  
Climb to 4000 on heading 216° and CRL VOR/DME R-025 to CRL VOR/DME and hold, continue climb-in-hold to 4000.

D-ATIS <b>133.675</b>	DETROIT APP CON <b>124.05 284.0</b>	METRO TOWER <b>128.125 317.725</b> <b>PRM 135.775</b>	GND CON <b>121.8</b> (NW) <b>119.45</b> (NE) <b>132.725</b> (SW) <b>119.25</b> (SE)
--------------------------	--	---	---



ELEV 645	<b>D</b>	TDZE 637
----------	----------	----------



TDZL/RCLS Rws 3R, 4L, 4R and 22R  
REIL Rws 3L, 9L, 9R and 21R  
HIRL all Rws

4000	CRL R-025	CRL	OSKER I-DWC 10.8	LUPAY I-DWC 14.1	BHOLD I-DWC 17.4	DRBRN I-DWC 20.7	MCOMB I-DWC 24
3000		HULKA I-DWC 4.2	ROUGE I-DWC 7.5				
2000	I-DWC DME ANTENNA						
8000							GS 2.85° TCH 60
4.3 NM	3.3 NM	3.3 NM	3.3 NM	3.3 NM	3.3 NM	3.3 NM	
CATEGORY	A	B	C	D			
S-ILS 22L*	837/24 200 (200-1/2)						

EC-1, 11 JUN 2026 to 09 JUL 2026

EC-1, 11 JUN 2026 to 09 JUL 2026