

# ILS PRM Y RWY 22R (CLOSE PARALLEL)

DETROIT METRO WAYNE COUNTY (DTW)

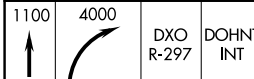
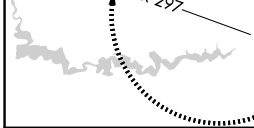
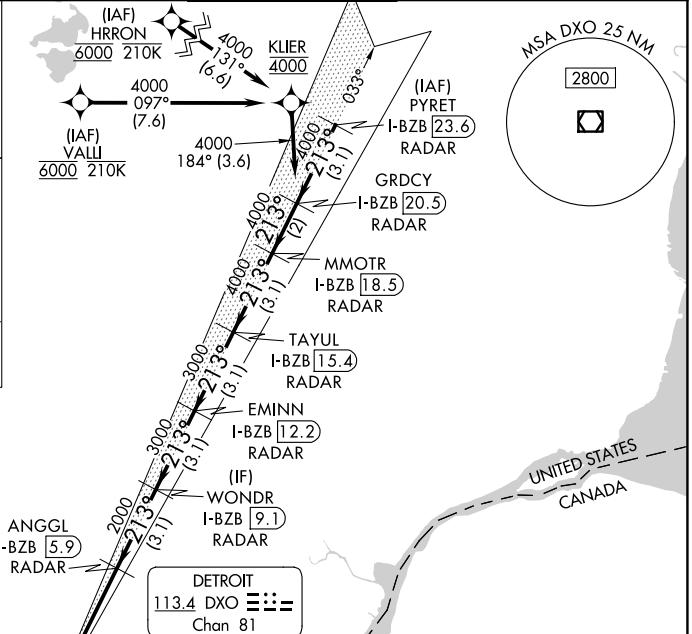
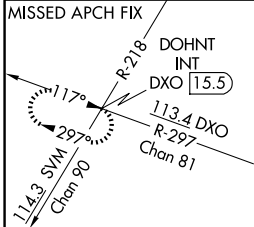
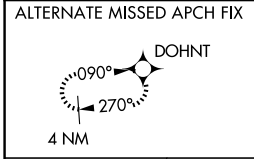
LOC/DME I-BZB <b>111.75</b> Chan <b>54 (Y)</b>	APP CRS <b>213°</b>	Rwy Ldg TDZE Apt Elev	<b>10000</b> <b>642</b> <b>645</b>
--	------------------------	-----------------------------	--

RNAV 1-GPS, HRRON and VALLI: RNAV 1-DME/DME/IRU or GPS required.  
Aircraft not DME/DME/IRU or GPS equipped - RADAR required for procedure entry.

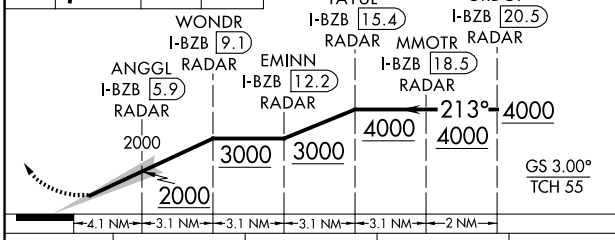
Simultaneous approach authorized.  
Procedure NA when glide slope not available (ILS procedures only).  
Dual VHF Comm required. See additional requirements on AAUP.

MALSR  
MISSED APPROACH: Climb to 1100 then climbing right turn to 4000 on DXO VOR/DME R-297 to DOHNT INT/DXO 15.5 DME and hold.

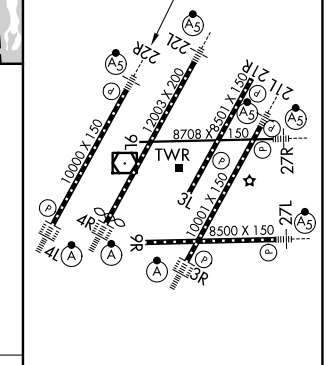
D-ATIS <b>133.675</b>	DETROIT APP CON <b>124.05 284.0</b>	METRO TOWER <b>135.0 317.725</b> <b>PRM 127.05</b>	GND CON <b>121.8 (NW) 119.45 (NE)</b> <b>132.725 (SW) 119.25 (SE)</b>
--------------------------	--	--	---



VGSI and ILS glidepath not coincident (VGSI Angle 3.00/TCH 71).



ELEV 645	D	TDZE 642
----------	---	----------



CATEGORY	A	B	C	D
S-ILS 22R		892/24	250 (300-1/2)	

TDZL/RCLS Rwy 3R, 4L, 4R and 22R  
REIL Rwy 3L, 9L, 9R and 21R  
HIRL all Rwy's

# ILS PRM Y RWY 22R (CLOSE PARALLEL)

EC-1, 11 JUN 2026 to 09 JUL 2026

EC-1, 11 JUN 2026 to 09 JUL 2026