

DETROIT, MICHIGAN

AL-119 (FAA)

26134

LOC/DME I-JKI 111.95	APP CRS 216°	Rwy Ldg TDZE 642 Apt Elev 645
Chan 56 (Y)		

ILS PRM Z RWY 22R (SA CAT I & II) (CLOSE PARALLEL)

DETROIT METRO WAYNE COUNTY (DTW)

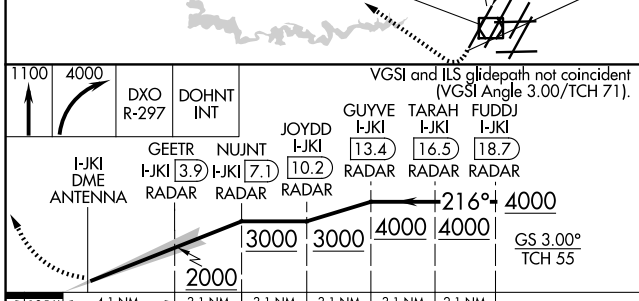
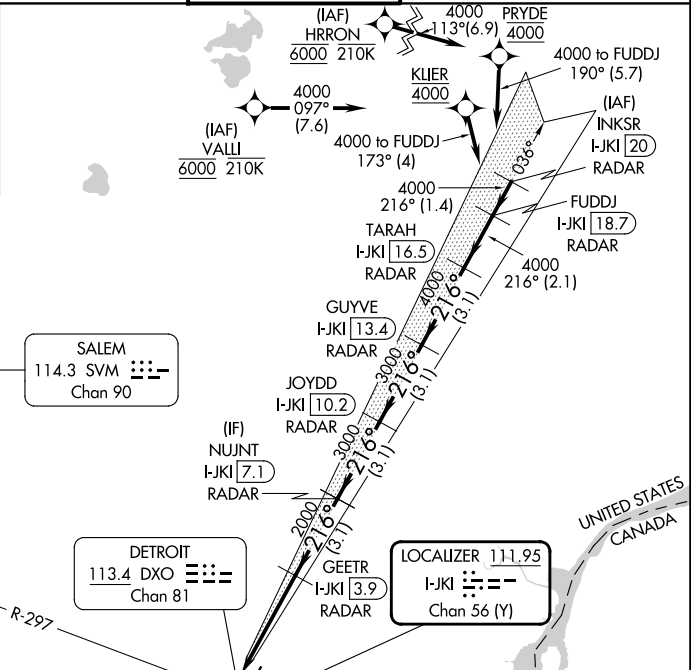
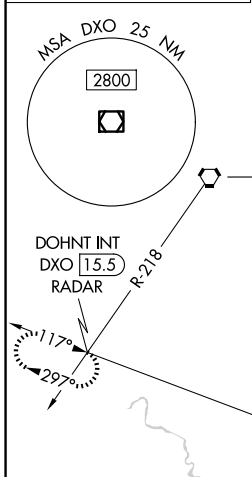
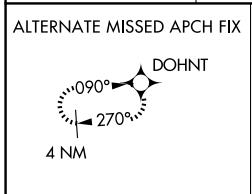
RNAV 1-GPS, HRRON and VALLI: RNAV 1-DME/DME/IRU or GPS required.
Aircraft not DME/DME/IRU or GPS equipped - RADAR required for procedure entry.

Simultaneous approach authorized. Use of FD or AP required during simultaneous operations. Dual VHF Comm required. See additional requirements on AAUP.
SA CAT I: Requires specific OPSPEC, MSPEC, or LOA approval and use of HUD to DH.
SA CAT II: Reduced lighting: Requires specific OPSPEC, MSPEC, or LOA approval and use of autoland or HUD to touchdown.

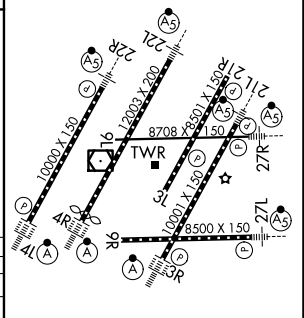
MALSR

MISSED APPROACH: Climb to 1100 then climbing right turn to 4000 on DXO VOR/DME R-297 to DOHNT INT/ DXO 15.5 DME/RADAR and hold.

D-ATIS 133.675	DETROIT APP CON 124.05 284.0	METRO TOWER 135.0 317.25 PRM 127.05	GND CON 121.8 (NW) 119.45 (NE) 132.725 (SW) 119.25 (SE)
--------------------------	--	---	---



ELEV 645	D	TDZE 642
-----------------	----------	-----------------



1058	4.1 NM	3.1 NM	3.1 NM	3.1 NM	3.1 NM	2.1 NM
CATEGORY	A	B	C	D		
S-ILS 22R	SA CAT I RA 148/14 150 DA 792					
S-ILS 22R	SA CAT II RA 98/12 100 DA 742					

SA CATEGORY I & II ILS - SPECIAL AIRCREW & AIRCRAFT CERTIFICATION REQUIRED

TDZL/RCLS Rwy 3R, 4L, 4R and 22R
REIL Rwy 3L, 9L, 9R and 21R
HIRL all Rwy

DETROIT, MICHIGAN

42°13'N-83°21'W

DETROIT METRO WAYNE COUNTY (DTW)

Orig-B 30JAN20

ILS PRM Z RWY 22R (SA CAT I & II) (CLOSE PARALLEL)

EC-1, 11 JUN 2026 to 09 JUL 2026

EC-1, 11 JUN 2026 to 09 JUL 2026