

LOC/DME I-BZB 111.75 Chan 54 (Y)	APP CRS 213°	Rwy Ldg TDZE Apt Elev	10000 642 645
------------------------------------------------------	------------------------	-----------------------------	------------------------------------------

ILS Y RWY 22R

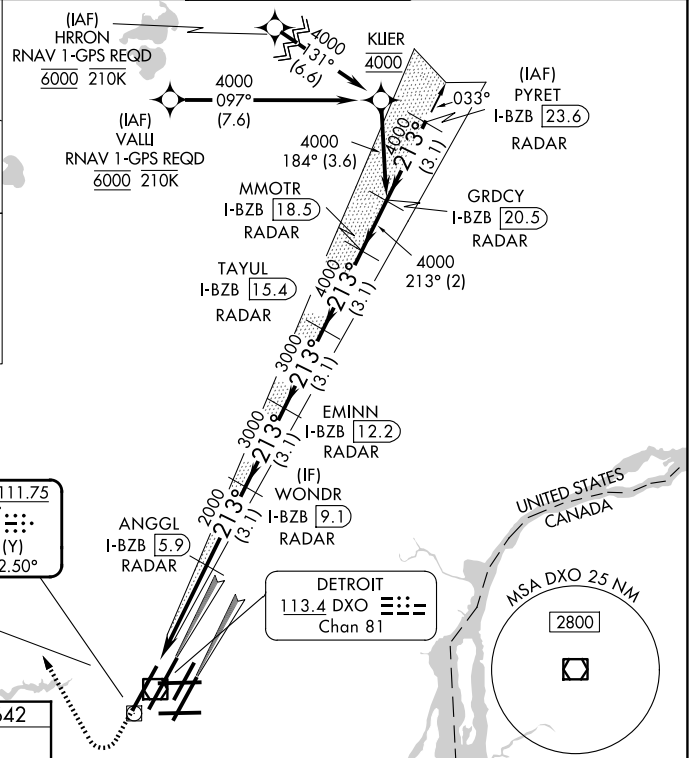
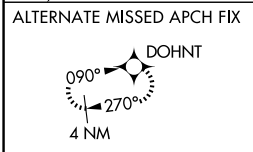
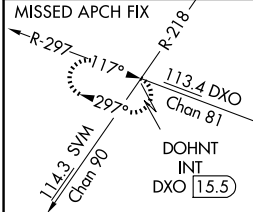
DETROIT METRO WAYNE COUNTY (DTW)

RNAV 1-GPS. HRRON and VALLI: RNAV 1-DME/DME/IRU or GPS required. Aircraft not DME/DME/IRU or GPS equipped - RADAR required for procedure entry.

MALSRS MISSED APPROACH: Climb to 1100 then climbing right turn to 4000 on DXO VOR/DME R-297 to DOHNT INT/DXO 15.5 DME and hold.

Simultaneous approach authorized.

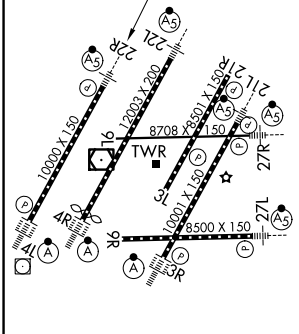
D-ATIS 133.675	DETROIT APP CON 124.05 284.0	METRO TOWER 135.0 317.725	GND CON 121.8 (NW) 119.45 (NE) 132.725 (SW) 119.25 (SE)
--------------------------	----------------------------------------	-------------------------------------	-----------------------------------------------------------------------------



LOCALIZER 111.75
I-BZB
Chan 54 (Y)
LOC offset 2.50°

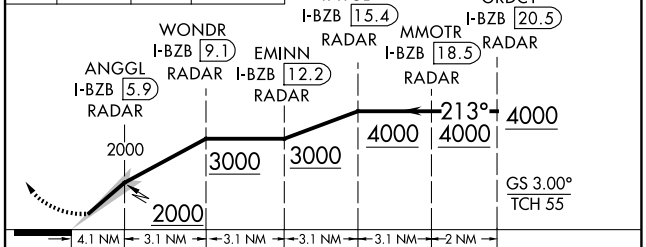
DETROIT 113.4 DXO
Chan 81

ELEV 645	TDZE 642
----------	----------



TDZL/RCLS Rwws 3R, 4L, 4R and 22R
REIL Rwws 3L, 9L, 9R and 21R
HIRL all Rwws

1100 4000
DXO R-297 DOHNT INT
VGSi and ILS glidepath not coincident (VGSi Angle 3.00/TCH 71).



CATEGORY	A	B	C	D
S-ILS 22R	892/24 250 (300-1/2)			

EC-1, 11 JUN 2026 to 09 JUL 2026

EC-1, 11 JUN 2026 to 09 JUL 2026