

LOC/DME I-JKI <b>111.95</b>	APP CRS <b>216°</b>	Rwy Ldg TDZE <b>642</b> Apt Elev <b>645</b>
Chan <b>56 (Y)</b>		

# ILS Z RWY 22R (SA CAT I & II)

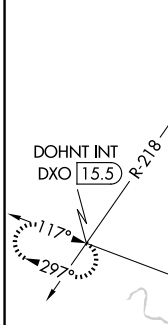
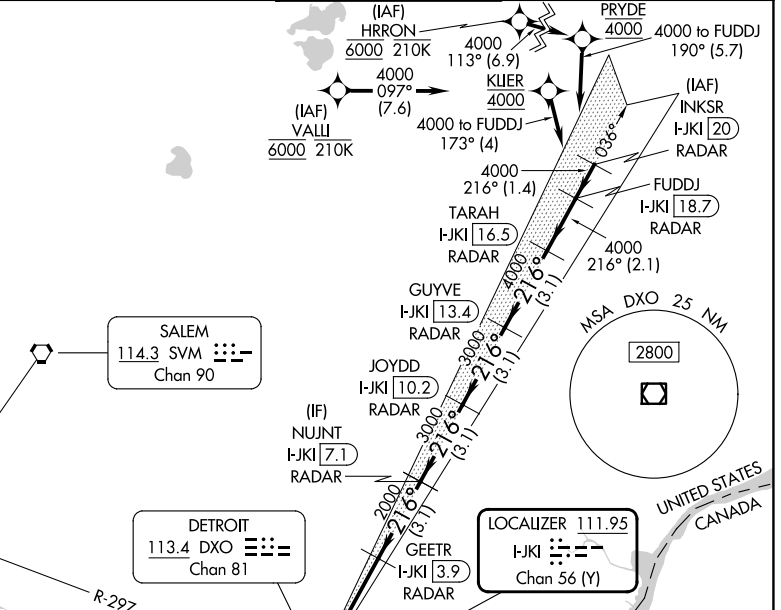
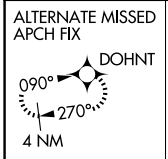
DETROIT METRO WAYNE COUNTY (DTW)

RNAV 1-GPS, HRRON and VALLI: RNAV 1-DME/DME/IRU or GPS required.  
 Aircraft not DME/DME/IRU or GPS equipped - RADAR required for procedure entry.

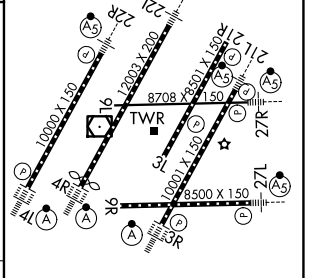
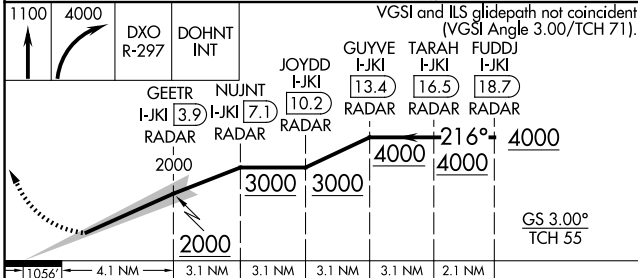
Simultaneous approach authorized. SA CAT I: Requires specific OPSPEC, MSPEC, or LOA approval and use of HUD to DH. SA CAT II: Reduced lighting: Requires specific OPSPEC, MSPEC, or LOA approval and use of autoland or HUD to touchdown.

MALSR 	MISSED APPROACH: Climb to 1100 then climbing right turn to 4000 on DXO VOR/DME R-297 to DOHNT INT/DXO 15.5 DME and hold.
	GND CON <b>121.8</b> (NW) <b>119.45</b> (NE) <b>132.725</b> (SW) <b>119.25</b> (SE)

D-ATIS <b>133.675</b>	DETROIT APP CON <b>124.05 284.0</b>	METRO TOWER <b>135.0 317.725</b>
--------------------------	--	-------------------------------------



ELEV 645	TDZE 642
----------	----------



SA CAT I	RA 148/14	150 DA 792
SA CAT II	RA 98/12	100 DA 742

**SA CATEGORY I & II ILS - SPECIAL AIRCREW & AIRCRAFT CERTIFICATION REQUIRED**

TDZL/RCLS Rwy 3R, 4L, 4R and 22R  
 REL Rwy 3L, 9L, 9R and 21R  
 HIRL all Rwy

EC-1, 11 JUN 2026 to 09 JUL 2026

EC-1, 11 JUN 2026 to 09 JUL 2026