


LOC/DME I-HJT 111.95 Chan 56(Y)	APP CRS 036°	Rwy Ldg TDZE Apt Elev	10000 645 645
---	------------------------	-----------------------------	--

ILS Z RWY 4L (CAT II & III)

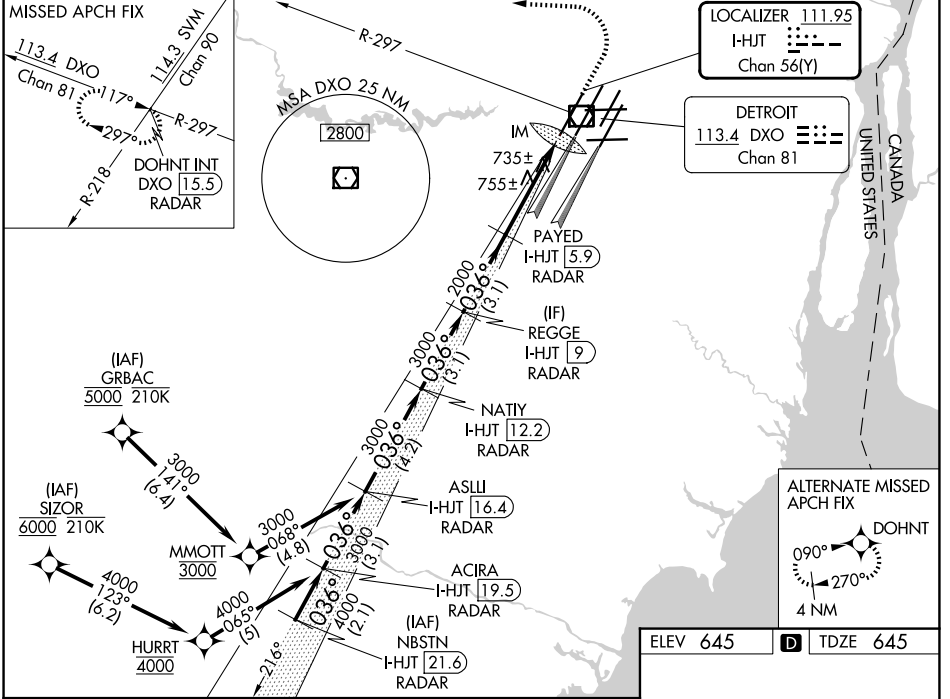
DETROIT METRO WAYNE COUNTY (DTW)

From GRBAC, SIZOR: RNAV 1-DME/DME/IRU or GPS required. Aircraft not DME/DME/IRU or GPS equipped - RADAR required for procedure entry. DME or RADAR required.

ALSF-2

 MISSED APPROACH: Climb to 1100 then climbing left turn to 4000 on DXO VOR/DME R-297 to DOHNT INT/DXO 15.5 DME/RADAR and hold.

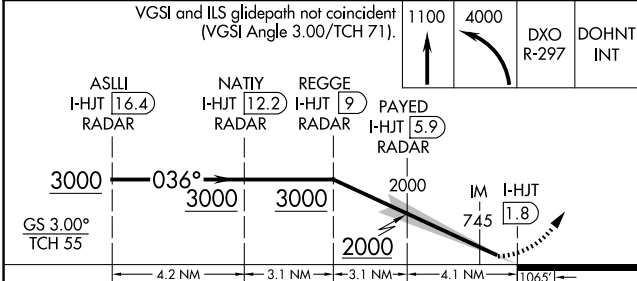
Simultaneous approach authorized. CAT II; RVR 1000 authorized with specific OPSPEC, MSPEC, or LOA approval and use of autoland or HUD to touchdown.

D-ATIS 133.675	DETROIT APP CON 124.05 284.0	METRO TOWER 135.0 317.725	GND CON 121.8 (NW) 119.45 (NE) 132.725 (SW) 119.25 (SE)
--------------------------	--	-------------------------------------	---

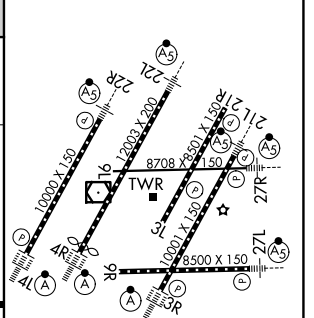


EC-1, 11 JUN 2026 to 09 JUL 2026

EC-1, 11 JUN 2026 to 09 JUL 2026



ELEV 645	D	TDZE 645
----------	----------	----------



CATEGORY	A	B	C	D
S-ILS 4L	CAT II RA 101/12		100 DA 745	
S-ILS 4L	CAT III RVR 600			

CATEGORY II & III ILS - SPECIAL AIRCREW & AIRCRAFT CERTIFICATION REQUIRED

TDZL/RCLS Rwy's 3R, 4L, 4R and 22R
 REIL Rwy's 3L, 9L, 9R and 21R
 HIRL all Rwy's