

RNAV 1 - DME/DME/IRU or GPS.

RADAR required.

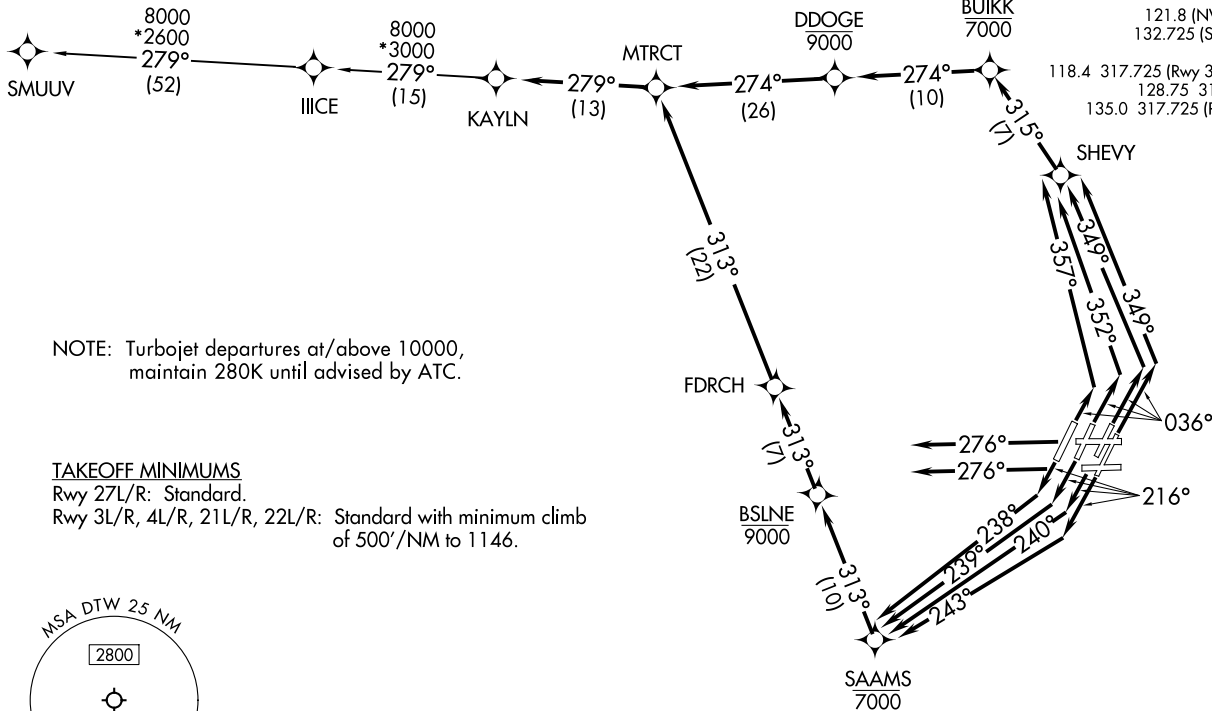
DETROIT DEP CON
 125.525 284.0
 D-ATIS 118.125
 CLNC DEL 120.65
 CPDLC
 GND CON
 121.8 (NW) 119.45 (NE)
 132.725 (SW) 119.25 (SE)
 METRO TOWER
 118.4 317.725 (Rwy 3L/R, 21L/R, 27R)
 128.75 317.725 (Rwy 27L)
 135.0 317.725 (Rwy 4L/R, 22L/R)

**TOP ALTITUDE:
17000**

KAYLN THREE DEPARTURE (RNAV)
(KAYLN3.KAYLN) 16MAN724

(KAYLN3.KAYLN) 24137
KAYLN THREE DEPARTURE (RNAV)

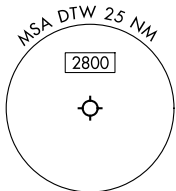
DETROIT METRO WAYNE COUNTY (DTW)
AL-119 (FAA)
DETROIT, MICHIGAN



NOTE: Turbojet departures at/above 10000, maintain 280K until advised by ATC.

TAKEOFF MINIMUMS

Rwy 27L/R: Standard.
 Rwy 3L/R, 4L/R, 21L/R, 22L/R: Standard with minimum climb of 500'/NM to 1146.



(CONTINUED ON FOLLOWING PAGE)

NOTE: Chart not to scale.

DETROIT, MICHIGAN
DETROIT METRO WAYNE COUNTY (DTW)



DEPARTURE ROUTE DESCRIPTION

SEE ADDITIONAL REQUIREMENTS ON AAUP.

TAKEOFF RUNWAYS 3L/R: Climb on heading 036° to intercept course 349° to SHEVY, then on track 315° to cross BUIKK at or below 7000, then on track 274° to cross DDOGE at or below 9000, then on track 274° to MTRCT, thence....

TAKEOFF RUNWAY 4L: Climb on heading 036° to intercept course 357° to SHEVY, then on track 315° to cross BUIKK at or below 7000, then on track 274° to cross DDOGE at or below 9000, then on track 274° to MTRCT, thence....

TAKEOFF RUNWAY 4R: Climb on heading 036° to intercept course 352° to SHEVY, then on track 315° to cross BUIKK at or below 7000, then on track 274° to cross DDOGE at or below 9000, then on track 274° to MTRCT, thence....

TAKEOFF RUNWAY 21L: Climb on heading 216° to intercept course 243° to cross SAAMS at or below 7000, then on track 313° to cross BSLNE at or below 9000, then on track 313° to FDRCH, then on track 313° to MTRCT, thence....

TAKEOFF RUNWAY 21R: Climb on heading 216° to intercept course 240° to cross SAAMS at or below 7000, then on track 313° to cross BSLNE at or below 9000, then on track 313° to FDRCH, then on track 313° to MTRCT, thence....

TAKEOFF RUNWAY 22L: Climb on heading 216° to intercept course 239° to cross SAAMS at or below 7000, then on track 313° to cross BSLNE at or below 9000, then on track 313° to FDRCH, then on track 313° to MTRCT, thence....

TAKEOFF RUNWAY 22R: Climb on heading 216° to intercept course 238° to cross SAAMS at or below 7000, then on track 313° to cross BSLNE at or below 9000, then on track 313° to FDRCH, then on track 313° to MTRCT, thence....

TAKEOFF RUNWAYS 27L/R: Climb on heading 276° or as assigned by ATC, for RADAR vectors to MTRCT, thence....

....on track 279° to KAYLN, then on (transition). Maintain 17000, expect filed altitude 10 minutes after departure.

SMUUV TRANSITION (KAYLN3.SMUUV):

EC-1, 11 JUN 2026 to 09 JUL 2026

EC-1, 11 JUN 2026 to 09 JUL 2026