

(LIDDS4.LIDDS) 17Apr25

LIDDS FOUR DEPARTURE (RNAV)

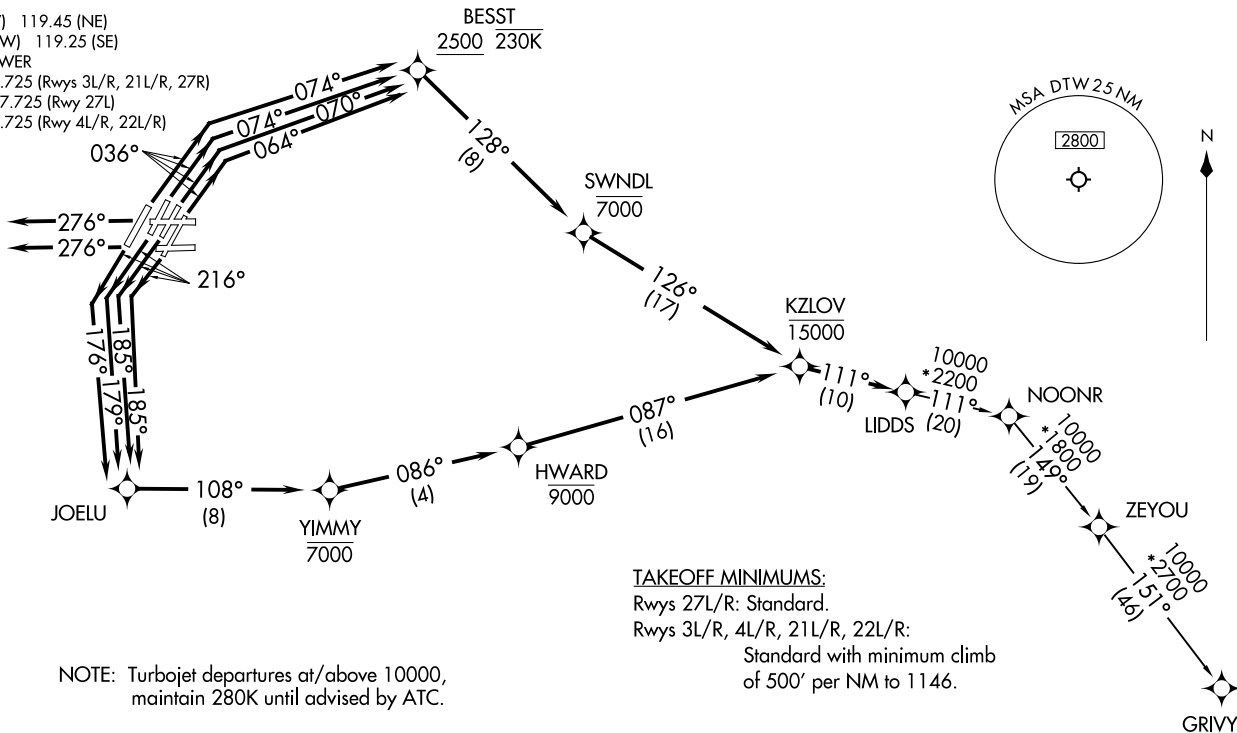
DETROIT METRO WAYNE COUNTY (DTW)

DETROIT, MICHIGAN

DETROIT DEP CON
 132.025 284.0
 D-ATIS 118.125
 CLNC DEL 120.65
 CPDLC
 GND CON
 121.8 (NW) 119.45 (NE)
 132.725 (SW) 119.25 (SE)
 METRO TOWER
 118.4 317.725 (Rwys 3L/R, 21L/R, 27R)
 128.75 317.725 (Rwy 27L)
 135.0 317.725 (Rwy 4L/R, 22L/R)

RNAV 1 - DME/DME/IRU or GPS.
 RADAR required.
 RADAR required for non-GPS equipped aircraft.

**TOP ALTITUDE:
 17000**



NOTE: Turbojet departures at/above 10000, maintain 280K until advised by ATC.

TAKEOFF MINIMUMS:
 Rwys 27L/R: Standard.
 Rwys 3L/R, 4L/R, 21L/R, 22L/R:
 Standard with minimum climb
 of 500' per NM to 1146.

NOTE: Chart not to scale.

(CONTINUED ON FOLLOWING PAGE)

(LIDDS4.LIDDS) 25107

LIDDS FOUR DEPARTURE (RNAV)

AL-119 (FAA)

DETROIT METRO WAYNE COUNTY (DTW)

DETROIT, MICHIGAN



DEPARTURE ROUTE DESCRIPTION

SEE ADDITIONAL REQUIREMENTS ON AAUP.

TAKEOFF RUNWAY 3L: Climb on heading 036° to intercept course 070° to cross BESST at or above 2500 and at or below 230K, then on track 128° to cross SWNDL at or below 7000, then on track 126° to cross KZLOV at or below 15000, thence....

TAKEOFF RUNWAY 3R: Climb on heading 036° to intercept course 064° to cross BESST at or above 2500 and at or below 230K, then on track 128° to cross SWNDL at or below 7000, then on track 126° to cross KZLOV at or below 15000, thence....

TAKEOFF RUNWAYS 4L/R: Climb on heading 036° to intercept course 074° to cross BESST at or above 2500 and at or below 230K, then on track 128° to cross SWNDL at or below 7000, then on track 126° to cross KZLOV at or below 15000, thence....

TAKEOFF RUNWAYS 21L/R: Climb on heading 216° to intercept course 185° to JOELU, then on track 108° to cross YIMMY at or below 7000, then on track 086° to cross HWARD at or below 9000, then on track 087° to cross KZLOV at or below 15000, thence....

TAKEOFF RUNWAY 22L: Climb on heading 216° to intercept course 179° to JOELU, then on track 108° to cross YIMMY at or below 7000, then on track 086° to cross HWARD at or below 9000, then on track 087° to cross KZLOV at or below 15000, thence....

TAKEOFF RUNWAY 22R: Climb on heading 216° to intercept course 176° to JOELU, then on track 108° to cross YIMMY at or below 7000, then on track 086° to cross HWARD at or below 9000, then on track 087° to cross KZLOV at or below 15000, thence....

TAKEOFF RUNWAYS 27L/R: Climb on heading 276° or as assigned by ATC, for RADAR vectors to cross KZLOV at or below 15000, thence....

....on track 111° to LIDDS, then on (transition). Maintain 17000, expect filed altitude 10 minutes after departure.

GRIVY TRANSITION (LIDDS4.GRIVY):

EC-1, 11 JUN 2026 to 09 JUL 2026

EC-1, 11 JUN 2026 to 09 JUL 2026