


# RNAV (GPS) PRM Y RWY 22R (CLOSE PARALLEL)

DETROIT METRO WAYNE COUNTY (DTW)

WAAS CH <b>42939</b> <b>W22B</b>	APP CRS <b>213°</b>	Rwy Ldg TDZE <b>642</b> Apt Elev <b>645</b>
--	------------------------	---

▼ For uncompensated Baro-VNAV systems, LNAV/VNAV NA below -19°C (-2°F) or above 54°C (130°F). DME/DME RNP-0.3 NA. Use of FD or AP providing RNAV track guidance required during simultaneous operations. Simultaneous approach authorized. Dual VHF comm required. See additional requirements on AAUP.

MALSR  


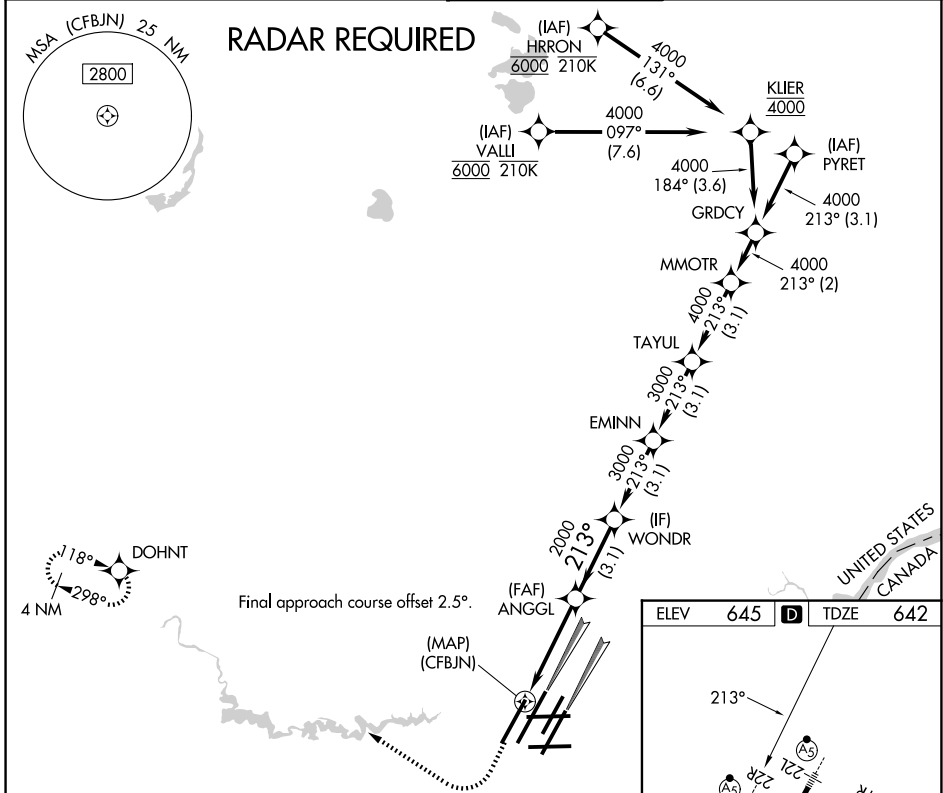
MISSED APPROACH: Climb to 1100 then climbing right turn to 4000 direct DOHNT and hold.


D-ATIS  
**133.675**

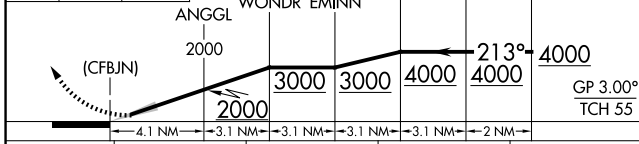
DETROIT APP CON  
**124.05 284.0**

METRO TOWER  
**135.0 317.725**  
**PRM 127.05**

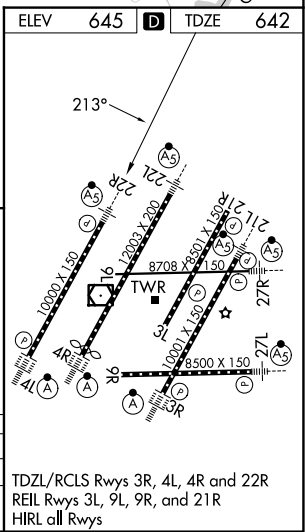
GND CON  
**121.8 (NW) 119.45 (NE)**  
**132.725 (SW) 119.25 (SE)**



1100 4000 DOHNT  
 VGSI and RNAV glidepath not coincident (VGSI Angle 3.00/TCH 71).



CATEGORY	A	B	C	D
LPV DA		892/24	250 (300-1/2)	
LNAV/VNAV DA		1050/45	408 (500-7/8)	



# RNAV (GPS) PRM Y RWY 22R (CLOSE PARALLEL)

EC-1, 11 JUN 2026 to 09 JUL 2026

EC-1, 11 JUN 2026 to 09 JUL 2026