

RNAV (GPS) PRM Y RWY 4L (CLOSE PARALLEL)

DETROIT METRO WAYNE COUNTY (DTW)

WAAS CH 82439 W04A	APP CRS 038°	Rwy Ldg 10000 TDZE 645 Apt Elev 645
--	------------------------	--

RNP APCH.

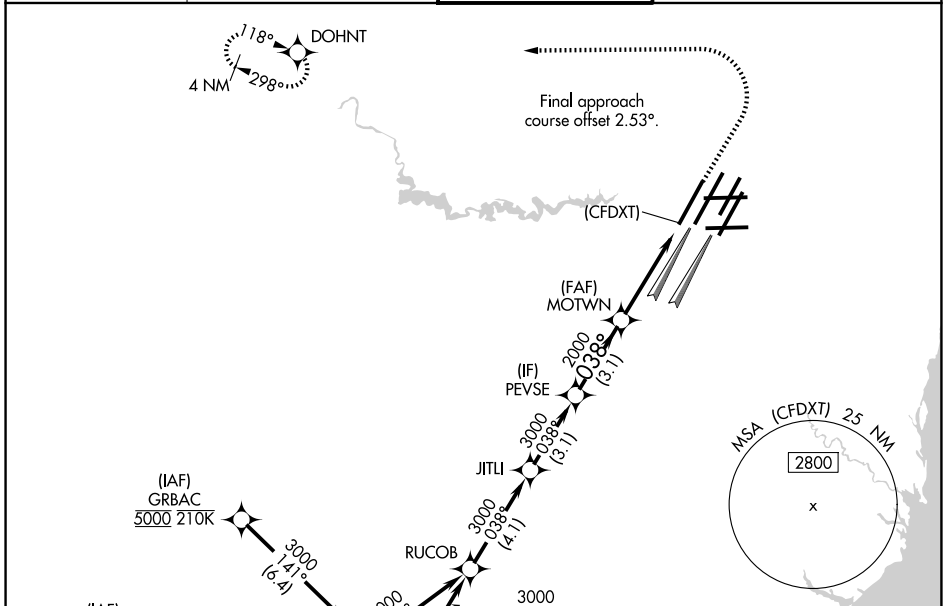
▼ Rwy 4L and 4R separated by 3000 feet centerline to centerline. For uncompensated Baro-VNAV systems, LNAV/VNAV NA below -19°C or above 54°C. Simultaneous approach authorized. Use of FD or AP required during simultaneous operations. Dual VHF comm required. See additional requirements on AAUP.

ALSF-2

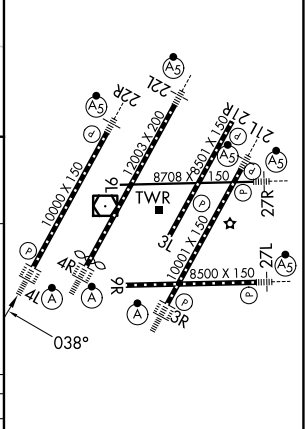


MISSED APPROACH:
Climb to 1100 then
direct left turn to 4000
direct DOHNT and hold.

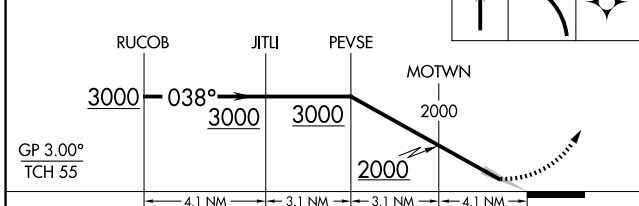
D-ATIS 133.675	DETROIT APP CON 124.05 284.0	METRO TOWER 135.0 317.725 PRM 127.05	GND CON 121.8 (NW) 119.45 (NE) 132.725 (SW) 119.25 (SE)
--------------------------	--	--	---



ELEV 645	D	TDZE 645
----------	----------	----------



VGSI and RNAV glidepath not coincident (VGSI Angle 3.00/TCH 71).



CATEGORY	A	B	C	D
LPV DA		895/24	250 (300-½)	
LNAV/VNAV DA		1068/45	423 (500-¾)	

TDZL/RCLS Rwy 3R, 4L, 4R and 22R
REL Rwy 3L, 9L, 9R, and 21R
HIRL all Rwy

RNAV (GPS) PRM Y RWY 4L (CLOSE PARALLEL)

EC-1, 11 JUN 2026 to 09 JUL 2026

EC-1, 11 JUN 2026 to 09 JUL 2026