

DETROIT, MICHIGAN

AL-119 (FAA)

RNAV (GPS) PRM Z RWY 4R (CLOSE PARALLEL)

DETROIT METRO WAYNE COUNTY (DTW)

WAAS CH 87139 W04B	APP CRS 036°	Rwy Ldg 11494 TDZE 640 Apt Elev 645
--	------------------------	--

RNP APCH.

▽ For uncompensated Baro-VNAV systems, LNAV/VNAV NA below -19°C or above 54°C. Simultaneous approach authorized. Use of FD or AP required during simultaneous operations. Dual VHF comm required. See additional requirements on AAUP.

ALS-F-2



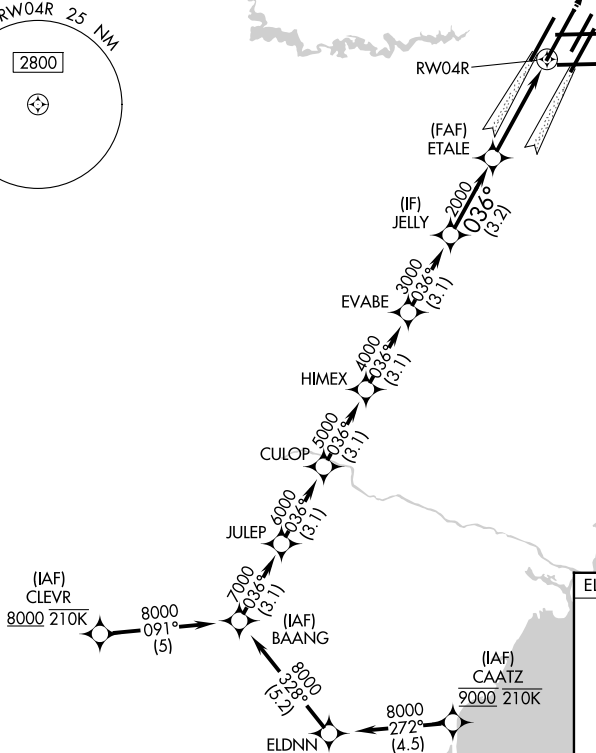
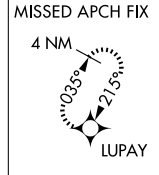
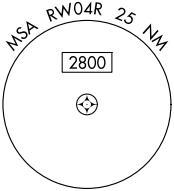
MISSED APPROACH:
Climb to 4000 direct LUPAY and hold.

D-ATIS
133.675

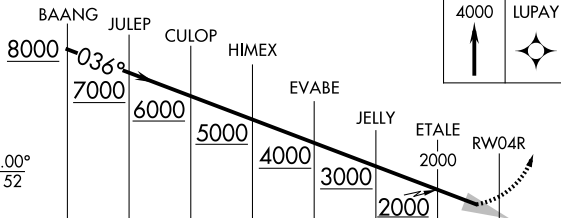
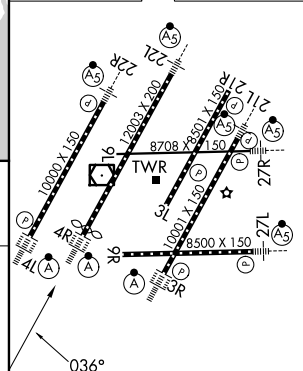
DETROIT APP CON
124.05 284.0

METRO TOWER
128.125 317.725
PRM 135.775

GND CON
121.8 (NW) 119.45 (NE)
132.725 (SW) 119.25 (SE)



ELEV 645 **D** TDZE 640



CATEGORY	A		B		C		D
LPV DA	840/18		200 (200-½)				
LNAV/VNAV DA	1021/35		381 (400-¾)				

TDZL/RCLS Rwy 3R, 4L, 4R and 22R
REL Rwy 3L, 9L, 9R and 21R
HIRL all Rwy

DETROIT, MICHIGAN
Amdt 1A 28FEB19

42°13'N-83°21'W
RNAV (GPS) PRM Z RWY 4R (CLOSE PARALLEL)

DETROIT METRO WAYNE COUNTY (DTW)

EC-1, 11 JUN 2026 to 09 JUL 2026

EC-1, 11 JUN 2026 to 09 JUL 2026