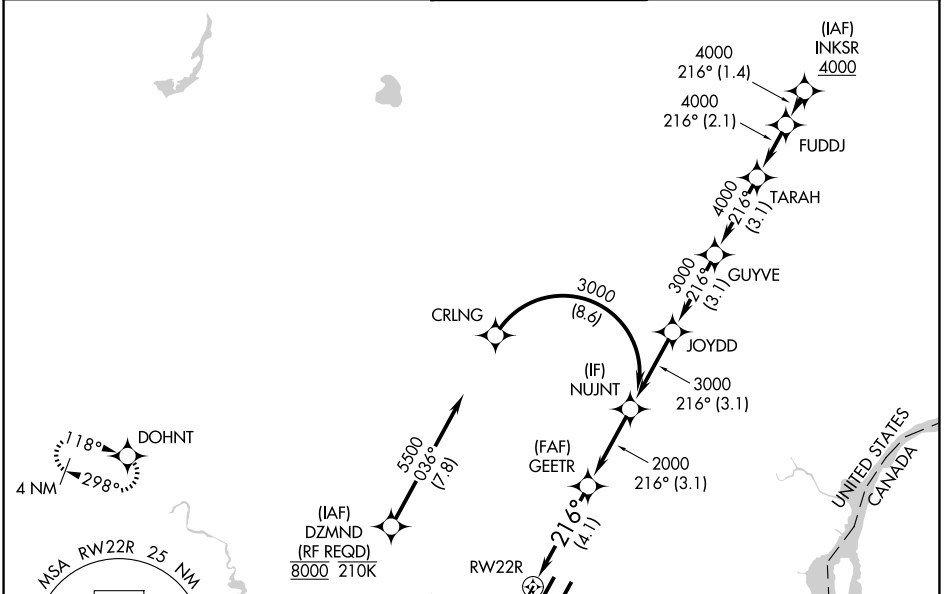


APP CRS	Rwy Ldg	10000
216°	TDZE	642
	Apt Elev	645

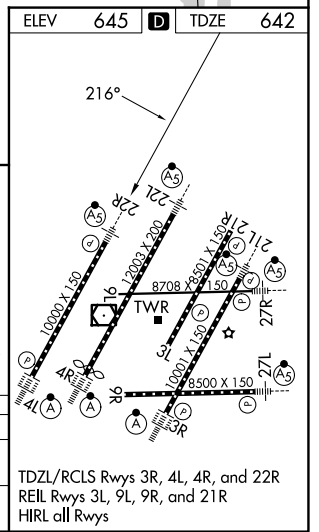
RNAV (RNP) W RWY 22R

DETROIT METRO WAYNE COUNTY (DTW)

RNP AR APCH. ▼ For uncompensated Baro-VNAV systems, procedure NA below -19°C or above 54°C. Simultaneous approach authorized. For inop ALS, increase RNP 0.30 all Cats visibility to RVR 5500.		MALSR 	MISSED APPROACH: Climb to 1100 then climbing right turn to 4000 direct DOHNT and hold, continue climb-in-hold to 4000.
D-ATIS 133.675	DETROIT APP CON 124.05 284.0	METRO TOWER 135.0 317.725	GND CON 121.8 (NW) 119.45 (NE) 132.725 (SW) 119.25 (SE)



1100 4000 DOHNT VGSI and RNAV glidepath not coincident (VGSI Angle 3.00/TCH 71). GEETR 2000 216° 3000 2000 RWY 22R 4.1 NM 3.1 NM	NUJNT GP 3.00° TCH 55
CATEGORY A B C D	
RNP 0.30 DA	987/30 345 (400-5/8)
<h2>AUTHORIZATION REQUIRED</h2>	



EC-1, 11 JUN 2026 to 09 JUL 2026

EC-1, 11 JUN 2026 to 09 JUL 2026