

APP CRS	Rwy Ldg	<b>10000</b>
<b>036°</b>	TDZE	<b>645</b>
	Apt Elev	<b>645</b>

# RNAV (RNP) W RWY 4L

DETROIT METRO WAYNE COUNTY (DTW)

RNP AR APCH.

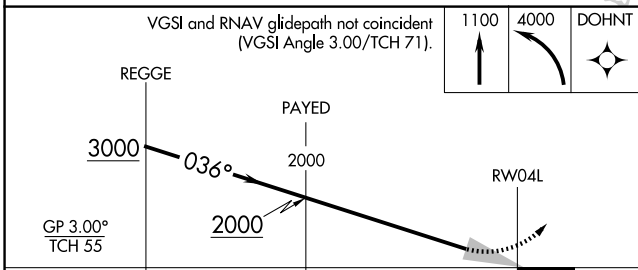
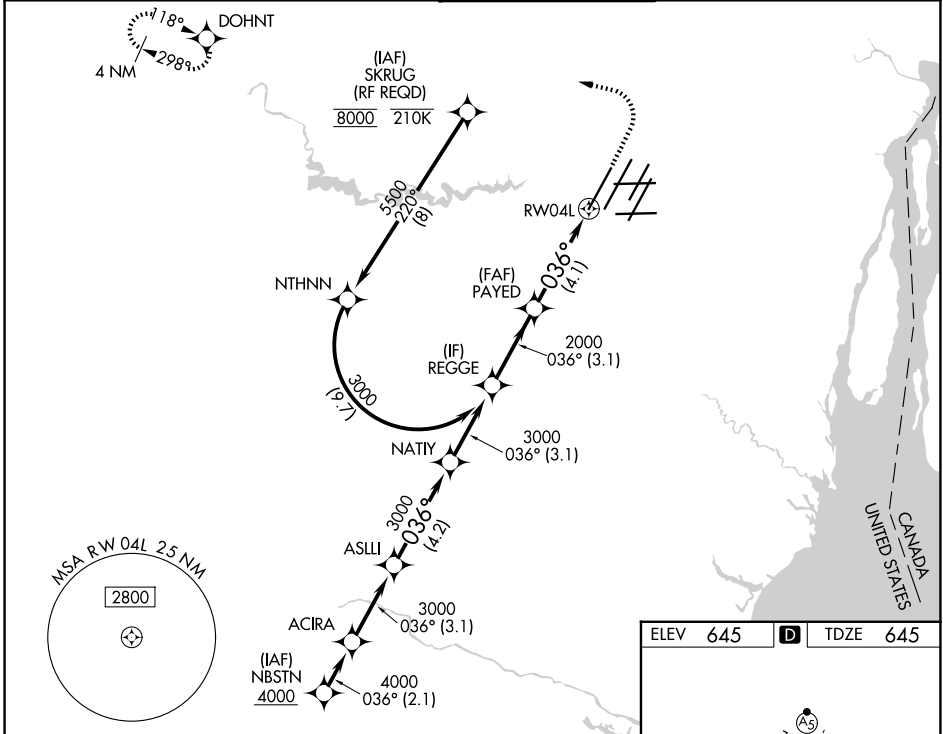
Simultaneous approach authorized. For uncompensated Baro-VNAV systems, procedure NA below -19°C or above 54°C. For inop ALS, increase RNP 0.30 all Cats visibility to RVR 6000.

ALS F-2



MISSED APPROACH: Climb to 1100 then climbing left turn to 4000 direct DOHNT and hold, continue climb-in-hold to 4000.

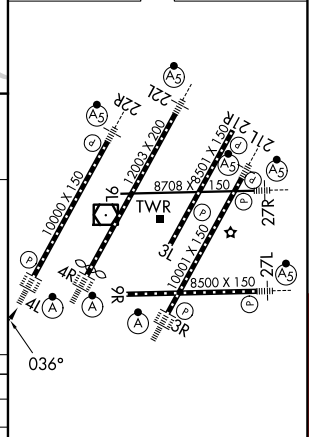
D-ATIS <b>133.675</b>	DETROIT APP CON <b>124.05 284.0</b>	METRO TOWER <b>135.0 317.725</b>	GND CON <b>121.8 (NW) 119.45 (NE) 132.725 (SW) 119.25 (SE)</b>
--------------------------	--	-------------------------------------	---



CATEGORY	A	B	C	D
RNP 0.15 DA		970/26	325 (400-½)	
RNP 0.30 DA		1058/40	413 (500-¾)	

## AUTHORIZATION REQUIRED

ELEV	645	TDZE	645
------	-----	------	-----



TDZL/RCLS Rwy 3R, 4L, 4R and 22R  
REIL Rwy 3L, 9L, 9R and 21R  
HIRL all Rwy

EC-1, 11 JUN 2026 to 09 JUL 2026

EC-1, 11 JUN 2026 to 09 JUL 2026