

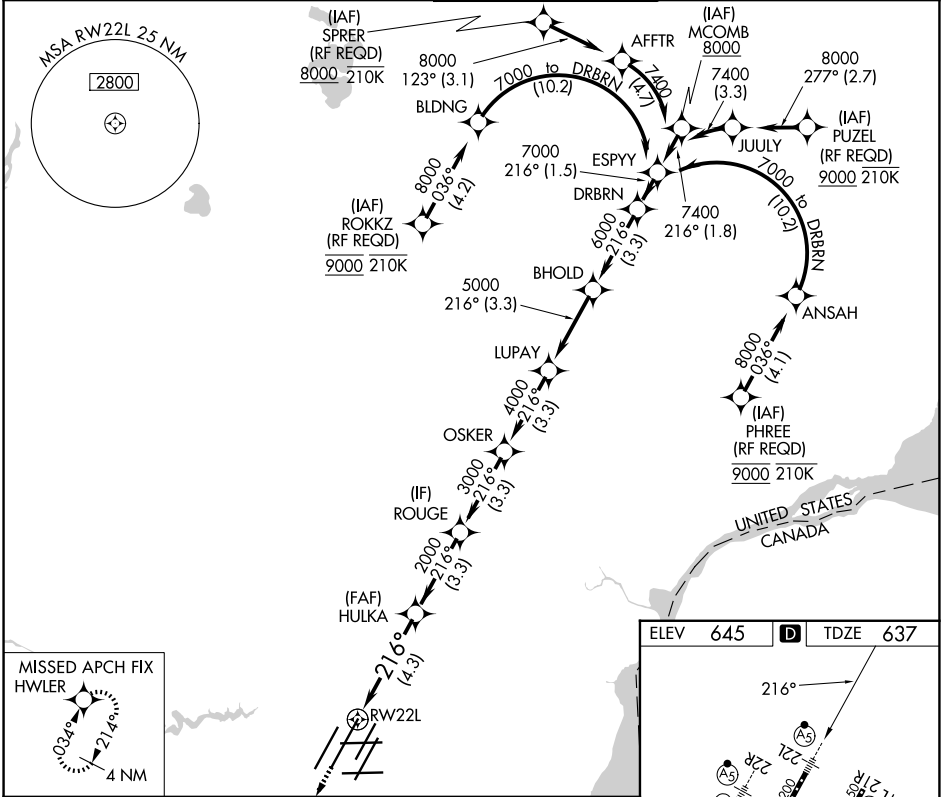
APP CRS	Rwy Ldg	12003
216°	TDZE	637
	Apt Elev	645

RNAV (RNP) X RWY 22L

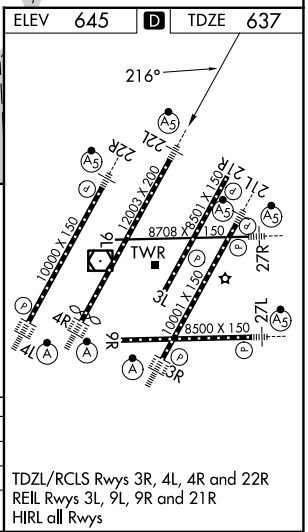
DETROIT METRO WAYNE COUNTY (DTW)

RNP AR APCH.	MALSR	MISSED APPROACH: Climb to 4000 direct HWLER and hold.
▼ For uncompensated Baro-VNAV systems, procedure NA below -10°C (14°F) or above 54°C (130°F). Simultaneous approach authorized. For inop ALS, increase RNP 0.15 all Cats visibility to RVR 4500 and RNP 0.30 all Cats visibility to RVR 6000.		

D-ATIS 133.675	DETROIT APP CON 124.05 284.0	METRO TOWER 128.125 317.725	GND CON 121.8 (NW) 119.45 (NE) 132.725 (SW) 119.25 (SE)
--------------------------	--	---------------------------------------	---



4000	HWLER	DRBRN			
HULKA	ROUGE	OSKER	LUPAY	BHOLD	7000
2000	3000	4000	5000	6000	
RW22L					GP 2.85° TCH 60
4.3 NM	3.3 NM	3.3 NM	3.3 NM	3.3 NM	3.3 NM
CATEGORY	A	B	C	D	
RNP 0.15 DA	941/24		304 (300-½)		
RNP 0.30 DA	1040/40		403 (400-¾)		



AUTHORIZATION REQUIRED

TDZL/RCLS Rwy's 3R, 4L, 4R and 22R
REIL Rwy's 3L, 9L, 9R and 21R
HIRL all Rwy's

EC-1, 11 JUN 2026 to 09 JUL 2026

EC-1, 11 JUN 2026 to 09 JUL 2026