

# RNAV (RNP) X RWY 22R


DETROIT METRO WAYNE COUNTY (DTW)

APP CRS	Rwy Ldg	<b>10000</b>
<b>216°</b>	TDZE	<b>642</b>
	Apt Elev	<b>645</b>

RNP AR APCH.

▼ For uncompensated Baro-VNAV systems, procedure NA below -19°C (-2°F) or above 54°C (130°F). Simultaneous approach authorized. For inop ALS, increase RNP 0.30 cll Cats visibility to RVR 5500.

MALSRL



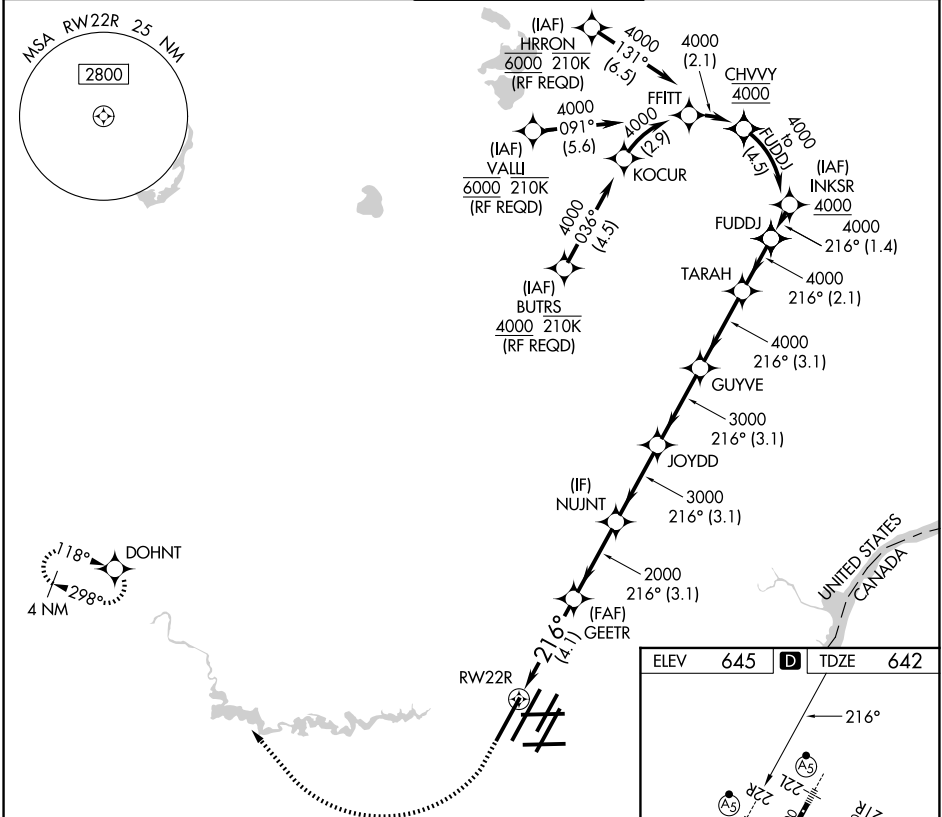
MISSED APPROACH: Climb to 1100 then climbing right turn to 4000 direct DOHNT and hold.

D-ATIS  
**133.675**

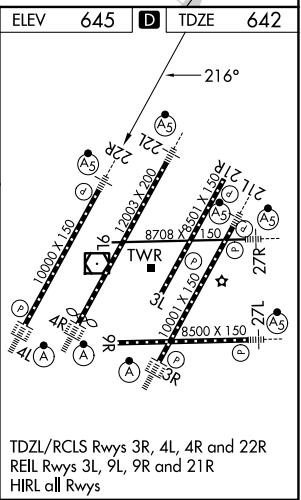
DETROIT APP CON  
**124.05 284.0**

METRO TOWER  
**135.0 317.725**

GND CON  
**121.8 (NW) 119.45 (NE)**  
**132.725 (SW) 119.25 (SE)**



1100	4000	DOHNT	VGSi and RNAV glidepath not coincident (VGSi Angle 3.00/TCH 71).			
			GUYVE	TARAH	FUDDJ	
	GEETR	NUJNT	JOYDD			
	2000		3000	3000	4000	4000
					216°	4000
						GP 3.00°
						TCH 55
	4.1 NM	3.1 NM	3.1 NM	3.1 NM	3.1 NM	2.1 NM
CATEGORY	A		B		C	D
RNP 0.30 DA			987/30		345 (400-5%)	



## AUTHORIZATION REQUIRED

TDZL/RCLS Rwy 3R, 4L, 4R and 22R  
REIL Rwy 3L, 9L, 9R and 21R  
HIRL all Rwy

EC-1, 11 JUN 2026 to 09 JUL 2026

EC-1, 11 JUN 2026 to 09 JUL 2026