

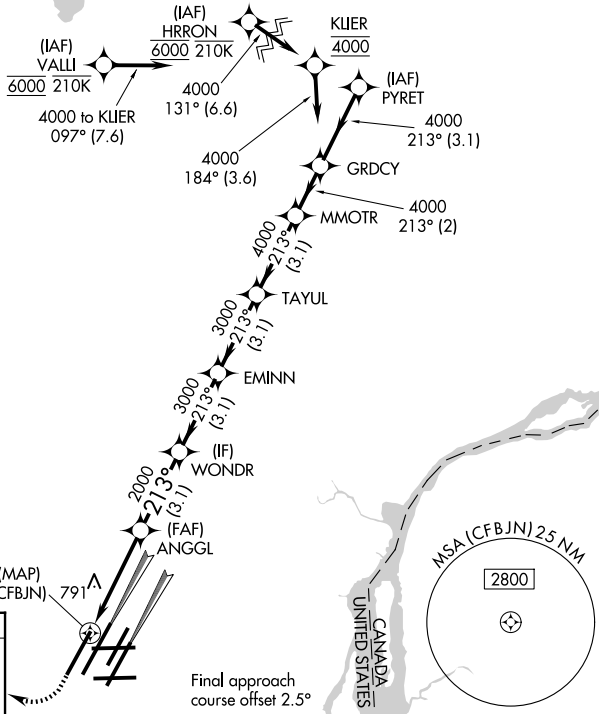
WAAS CH 42939 W22B	APP CRS 213°	Rwy Ldg TDZE Apt Elev	10000 642 645
--	------------------------	-----------------------------	--

RNAV (GPS) Y RWY 22R

DETROIT METRO WAYNE COUNTY (DTW)

<p>▼ For uncompensated Baro-VNAV systems, LNAV/VNAV NA below -19°C (-2°F) or above 54°C (130°F). DME/DME RNP-0.3 NA. Simultaneous approach authorized. LNAV procedure NA during simultaneous operations. Use of FD or AP providing RNAV track guidance required during simultaneous operations.</p>			<p>MALS R</p>	<p>MISSED APPROACH: Climb to 1100 then climbing right turn to 4000 direct DOHNT and hold.</p>
D-ATIS 133.675	DETROIT APP CON 124.05 284.0	METRO TOWER 135.0 317.725	<p>GND CON</p> <p>121.8 (NW) 119.45 (NE) 132.725 (SW) 119.25 (SE)</p>	

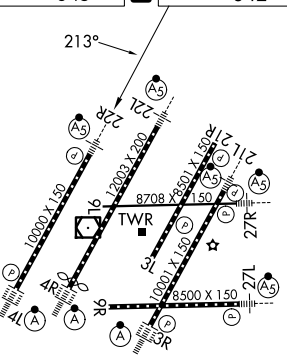
RADAR REQUIRED



MISSED APCH FIX



ELEV 645 **D** TDZE 642



1100	4000	DOHNT	VGSi and RNAV glidepath not coincident (VGSi Angle 3.00/TCH 71).										
*LNAV only.		ANGGL		WONDR		EMINN		TAYUL		MMOTR		GRDCY	
*1.1 NM to (CFBJN)		2000		3000		3000		4000		4000		4000	
1.1 NM		3.0 NM		3.1 NM		3.1 NM		3.1 NM		2 NM		GP 3.00° TCH 55	
CATEGORY	A			B		C		D					
LPV DA	892/24			250 (300-½)									
LNAV/VNAV DA	1050/45			408 (500-¾)									
LNAV MDA	1060/24		418 (500-½)		1060/40		418 (500-¾)						
CIRCLING	1180-1		535 (600-1)		1180-1½		535 (600-½)		1240-2		595 (600-2)		

TDZL/RCLS Rwy 3R, 4L, 4R and 22R
HIRL all Rwy
REIL Rwy 3L, 9L, 9R and 21R

EC-1, 11 JUN 2026 to 09 JUL 2026

EC-1, 11 JUN 2026 to 09 JUL 2026