

WAAS CH <b>99601</b> <b>W22A</b>	APP CRS <b>216°</b>	Rwy Ldg <b>12003</b> TDZE <b>637</b> Apt Elev <b>645</b>
--	------------------------	--

# RNAV (GPS) Z RWY 22L

DETROIT METRO WAYNE COUNTY (DTW)

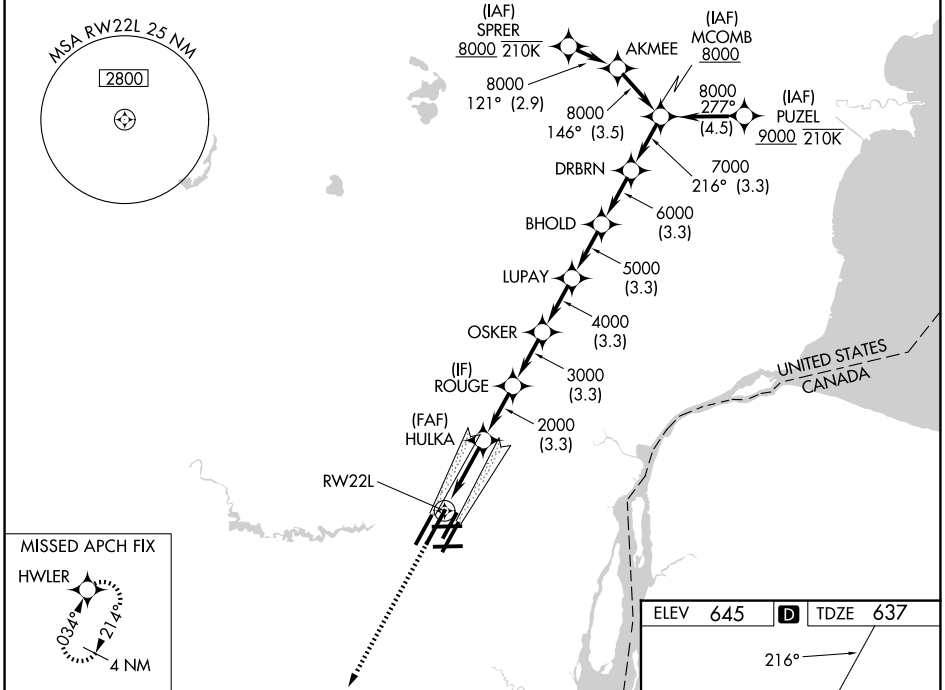
RNP APCH.

▼ For uncompensated Baro-VNAV systems, LNAV/VNAV NA below -10°C (14°F) or above 54°C (130°F). Simultaneous approach authorized. LNAV procedure NA during simultaneous operations. Use of FD or AP required during simultaneous operations. For inop ALS, increase LNAV/VNAV all Cats visibility to RVR 4500 and LNAV Cat C/D visibility to 1½ SM. #RVR 1800 authorized with use of FD or AP or HUD to DA.

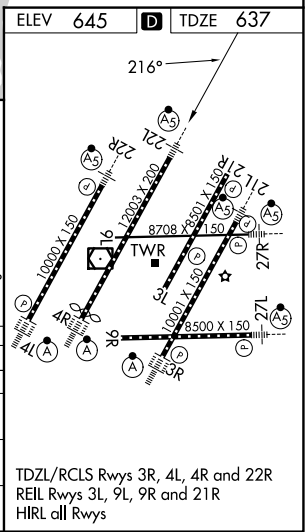


MISSED APPROACH:  
Climb to 4000 direct  
HWLER and hold.

D-ATIS <b>133.675</b>	DETROIT APP CON <b>124.05 284.0</b>	METRO TOWER <b>128.125 317.725</b>	GND CON <b>121.8</b> (NW) <b>119.45</b> (NE) <b>132.725</b> (SW) <b>119.25</b> (SE)
--------------------------	--	---------------------------------------	---



4000	HWLER				
*LNAV only.					
* 1.3 NM to RW22L					
RW22L					
1.3 NM		3 NM		3.3 NM	
HULKA 2000		ROUGE 3000		OSKER 4000	
		LUPAY 5000		BHOLD 6000	
				DRBRN 7000	
				MCOMB 8000	
				GP 2.85° TCH 60	
CATEGORY	3	A	B	C	D
LPV DA#		837/24		200 (200-½)	
LNAV/VNAV DA		938/24		301 (300-½)	
LNAV MDA	1100/24	463 (500-½)		1100/50 463 (500-¾)	
CIRCLING	1180-1	535 (600-1)		1180-1½ 535 (600-1½) 1240-2 595 (600-2)	



EC-1, 11 JUN 2026 to 09 JUL 2026

EC-1, 11 JUN 2026 to 09 JUL 2026