

WAAS CH <b>82241</b> <b>W04D</b>	APP CRS <b>036°</b>	Rwy Ldg <b>10000</b> TDZE <b>645</b> Apt Elev <b>645</b>
--	------------------------	--

# RNAV (GPS) Z RWY 4L

DETROIT METRO WAYNE COUNTY (DTW)

RNP APCH

Simultaneous approach authorized. Use of FD or AP required during simultaneous operations. LNAV procedure NA during simultaneous operations. For uncompensated Baro-VNAV systems, LNAV/VNAV NA below -19°C or above 54°C. For inop ALS, increase LNAV/VNAV all Cats visibility to RVR 6000.

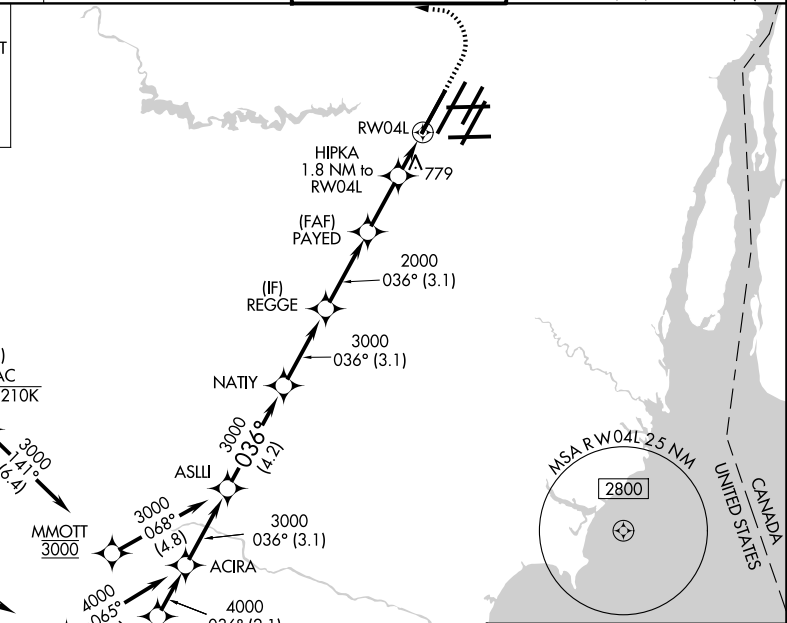
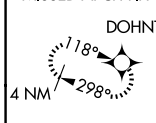
ALS-F-2



MISSED APPROACH: Climb to 1100 then climbing left turn to 4000 direct DOHNT and hold.

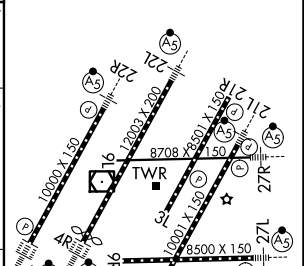
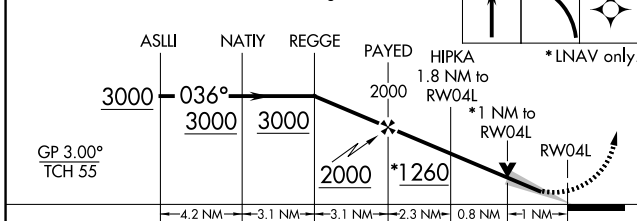
D-ATIS <b>133.675</b>	DETROIT APP CON <b>124.05 284.0</b>	METRO TOWER <b>135.0 317.725</b>	GND CON <b>121.8 (NW) 119.45 (NE)</b> <b>132.725 (SW) 119.25 (SE)</b>
--------------------------	--	-------------------------------------	---

MISSED APCH FIX



ELEV 645	<b>D</b> TDZE 645
----------	-------------------

VGSI and RNAV glidepath not coincident (VGSI Angle 3.00/TCH 71).



CATEGORY	A	B	C	D
LPV DA	845/18		200 (200-½)	
LNAV/VNAV DA	1046/40		401 (500-¾)	
LNAV MDA	1040/24	395 (400-½)	1040/35	395 (400-⅝)
CIRCLING	1180-1	535 (600-1)	1180-1½ 535 (600-1½)	1240-2 595 (600-2)

TDZL/RCLS Rwy's 3R, 4L, 4R and 22R  
REL Rwy's 3L, 9L, 9R and 21R  
HIRL all Rwy's

EC-1, 11 JUN 2026 to 09 JUL 2026

EC-1, 11 JUN 2026 to 09 JUL 2026