

LOC I-DLH <b>110.3</b>	APP CRS <b>093°</b>	Rwy Ldg <b>10062</b>
		TDZE <b>1428</b>
		Apt Elev <b>1428</b>

# ILS RWY 9 (CAT II)

## DULUTH INTL (DLH)

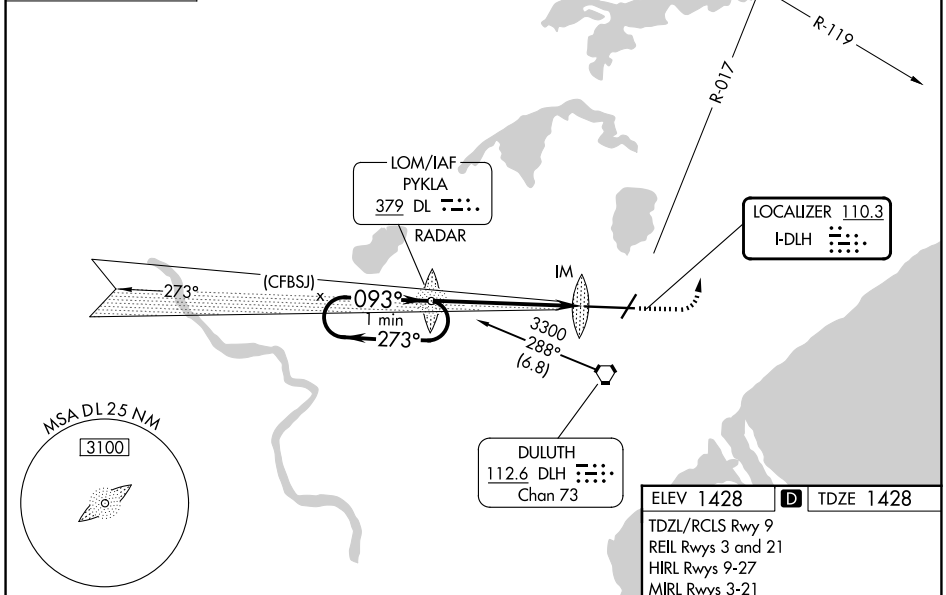
ASR ADF or RADAR required.	ALSF-2 	MISSED APPROACH: Climb to 3000 then climbing left turn to 4500 on heading 320° and on DLH VORTAC R-017 to CHERL INT/DLH 15 DME and hold.
-------------------------------	------------	--

ATIS <b>124.1 270.1</b>	DULUTH APP CON <b>125.45 233.7</b>	DULUTH TOWER <b>118.3 257.8</b>	GND CON <b>121.9 348.6</b>
----------------------------	---------------------------------------	------------------------------------	-------------------------------

ALTERNATE MISSED APCH FIX

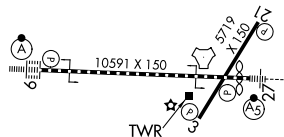
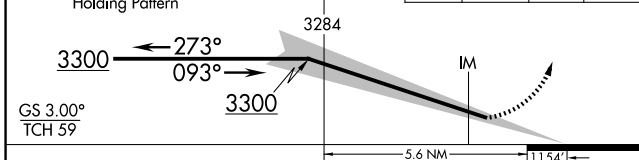
PYKLA  
 DL ---  
 379  
 RADAR

**ADF or RADAR REQUIRED**



VGSI and ILS glidepath not coincident (VGSI Angle 3.00/TCH 70).  
 One Minute Holding Pattern  
 DL PYKLA LOM RADAR

3000	4500	DLH R-017	CHERL INT
↑	hdg 320°		



CATEGORY	A	B	C	D
S-ILS 9	RA 101/12 100 DA 1528			

**CATEGORY II ILS - SPECIAL AIRCREW & AIRCRAFT CERTIFICATION REQUIRED**

NC-1, 11 JUN 2026 to 09 JUL 2026

NC-1, 11 JUN 2026 to 09 JUL 2026