

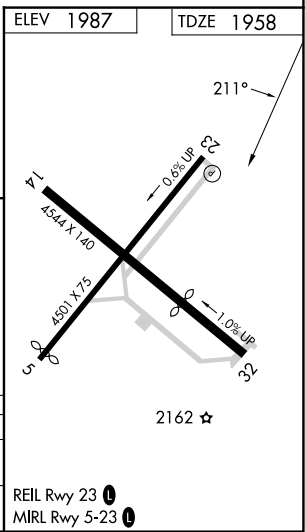
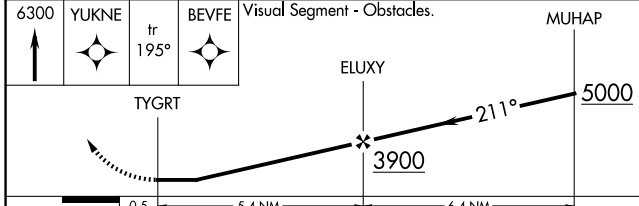
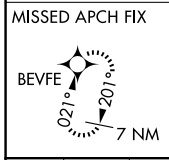
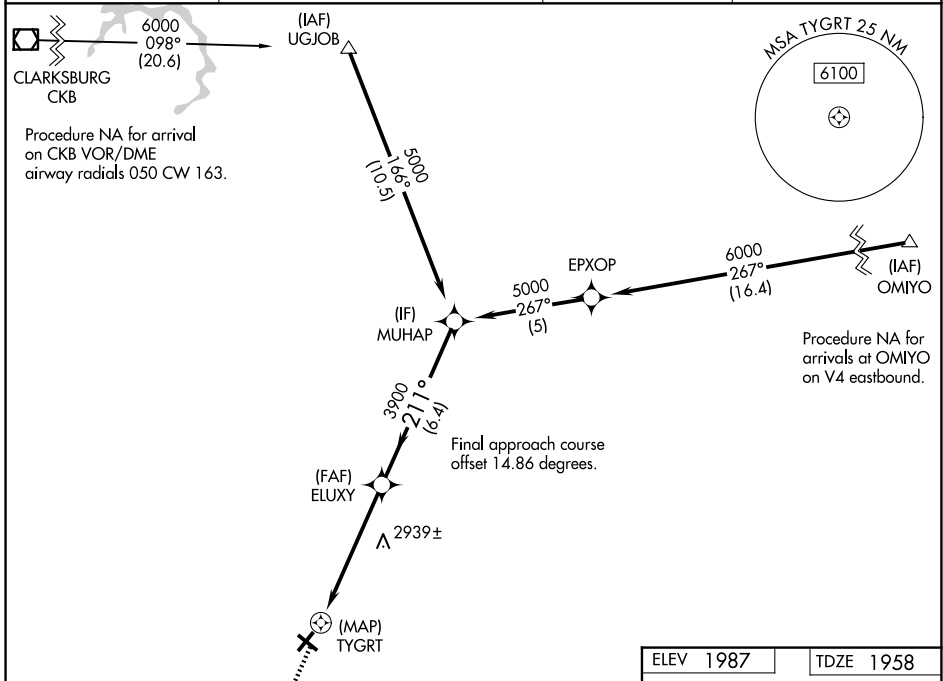
APP CRS **211°**  
 Rwy Ldg **4501**  
 TDZE **1958**  
 Apt Elev **1987**

# RNAV (GPS) RWY 23

ELKINS/RANDOLPH COUNTY (JENNINGS RANDOLPH FLD) (EKN)

RNP APCH. Straight-in Rwy 23 NA at night, Circling to Rwy 14, 23, 32 NA at night.  
 When local altimeter setting not received, use Buckhannon altimeter setting and increase all MDAs 100 feet. Rwy 23 helicopter visibility reduction below 1 SM NA.  
 MISSED APPROACH: Climb to 6300 direct YUKNE and on track 195° to BEVFE and hold, continue climb-in hold to 6300.

ASOS <b>119.275</b>	CLARKSBURG APP CON ★ <b>121.15 284.65</b>	CTAF <b>123.6</b>	<b>122.9 0</b>
------------------------	--	----------------------	----------------



CATEGORY	A	B	C	D
LNVA MDA	3160-1¼ 1202 (1200-1¼)	3160-1½ 1202 (1200-1½)	3160-3	1202 (1200-3)
CIRCLING	3160-1¼ 1173 (1200-1¼)	3160-1½ 1173 (1200-1½)	3720-3 1733 (1800-3)	NA

NE-4, 11 JUN 2026 to 09 JUL 2026

NE-4, 11 JUN 2026 to 09 JUL 2026