

APP CRS	Rwy Ldg	4347
032°	TDZE	1972
	Apt Elev	1987

RNAV (GPS) RWY 5

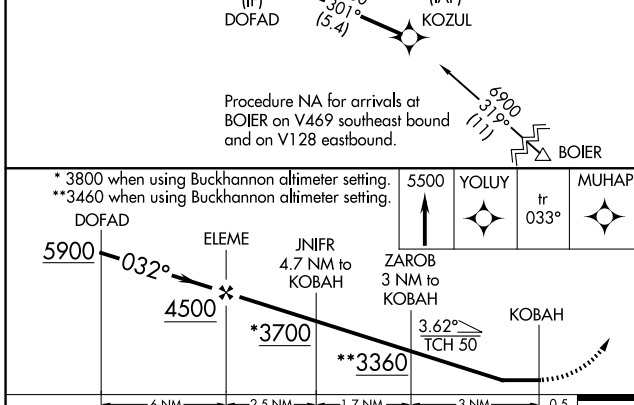
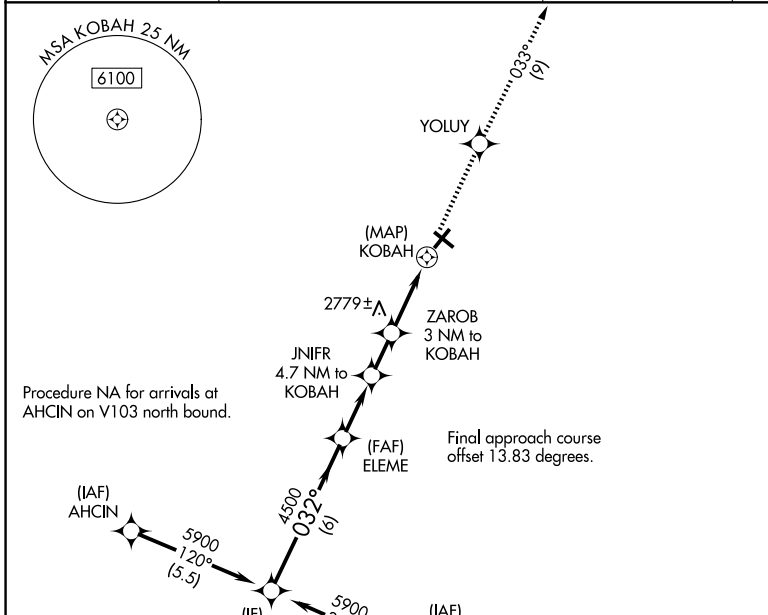
ELKINS/RANDOLPH COUNTY (JENNINGS RANDOLPH FLD) (EKN)

RNP APCH.

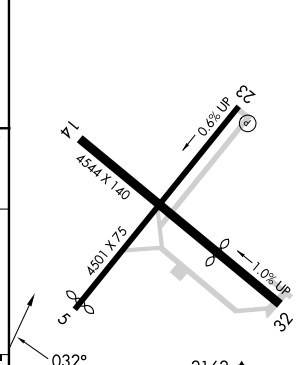
⚠ Circling Rwy 14, 23, 32 NA at night. When local altimeter setting not received, use Buckhannon altimeter setting and increase all MDA 100 feet.
⚠ Straight-in minimums NA when using Buckhannon altimeter setting.
⚠ Rwy 5 helicopter visibility reduction below 3/4 SM NA.

MISSED APPROACH: Climb to 5500 direct YOLUY and on track 033° to MUHAP and hold.

ASOS 119.275	CLARKSBURG APP CON ★ 121.15 284.65	CTAF 123.6	122.9 0
------------------------	--	----------------------	----------------



ELEV 1987	TDZE 1972
-----------	-----------



CATEGORY	A	B	C	D
LNVA MDA	3040-1½ 1068 (1100-1½)	3040-1½ 1068 (1100-1½)	3040-3 1068 (1100-3)	NA
CIRCLING	3040-1½ 1053 (1100-1½)	3140-1½ 1153 (1200-1½)	3720-3 1733 (1800-3)	4020-3 2033 (2100-3)

REL Rwy 23 **0**
 MRL Rwy 5-23 **0**

RNAV (GPS) RWY 5

NE-4, 11 JUN 2026 to 09 JUL 2026

NE-4, 11 JUN 2026 to 09 JUL 2026