

ENID, OKLAHOMA

ILS or LOC RWY 17R

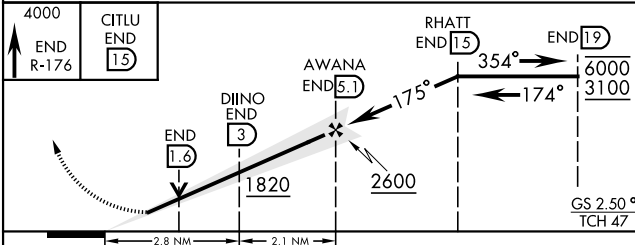
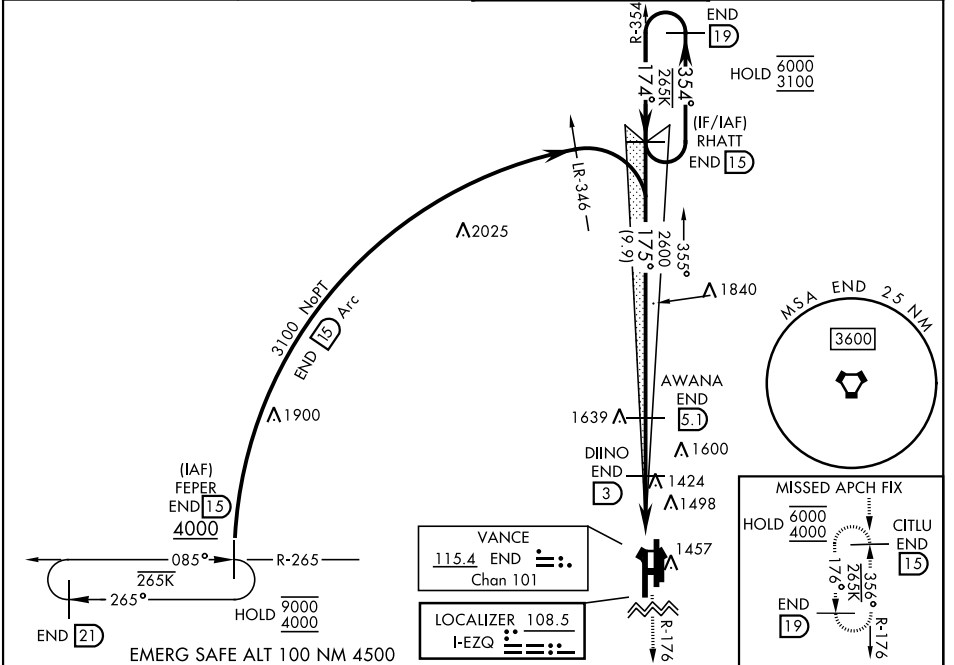
LOC I-EZQ 108.5	APCH CRS 175°	Rwy Idg 9217
		TDZE 1287
		Arpt Elev 1307

[USAF]

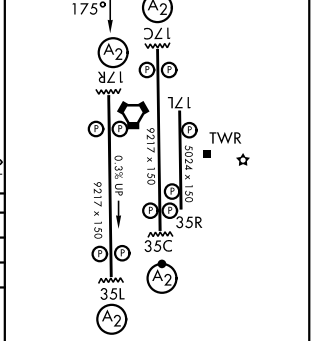
VANCE AFB (KEND)

A2 MISSED APPROACH: Climb to 4000, intercept END VORTAC R-176 to CITLU and hold.

ATIS ★ 115.4 263.15	APP CON 125.45 343.625 (E) 126.75 346.325 (W)	TOWER ★ 124.05 259.1	GND CON 121.675 289.4
-------------------------------	---	--------------------------------	---------------------------------



ELEV	1307	TDZE	1287
------	------	------	------



CATEGORY	A	B	C	D	E
S-ILS 17R	1487-3/4		200	(200-3/4)	
S-LOC 17R*	1680-3/4 393 (400-3/4)		1680-7/8 393 (400-7/8)		
CIRCLING	1760-1	1800-1 1/2	1900-2	2400-3	
	453 (500-1)	493 (500-1 1/2)	593 (600-2)	1093 (1100-3)	
LOCAL ALTIMETER, WITHOUT LAST STEPDOWN FIX					
S-LOC 17R**	1820-3/4 533 (600-3/4)		1820-1 1/4 533 (600-1 1/4)		
CIRCLING	1820-1	1820-1 1/2	1900-2	2400-3	
	513 (600-1)	513 (600-1 1/2)	593 (600-2)	1093 (1100-3)	

HIRL Rwy 17C-35C, 17R-35L	
MIRL Rwy 17L-35R	
REIL Rwys 17L, 35R	
FAF to MAP 4.8 NM	
Knots	60 90 120 150 180
Min:Sec	4:48 3:12 2:24 1:55 1:36

ENID, OKLAHOMA

36° 20' N-97° 55' W

VANCE AFB (KEND)

Orig 12JUN25

ILS or LOC RWY 17R

SC-1, 11 JUN 2026 to 09 JUL 2026

SC-1, 11 JUN 2026 to 09 JUL 2026