

ENID, OKLAHOMA

# RNAV (GPS) RWY 17L

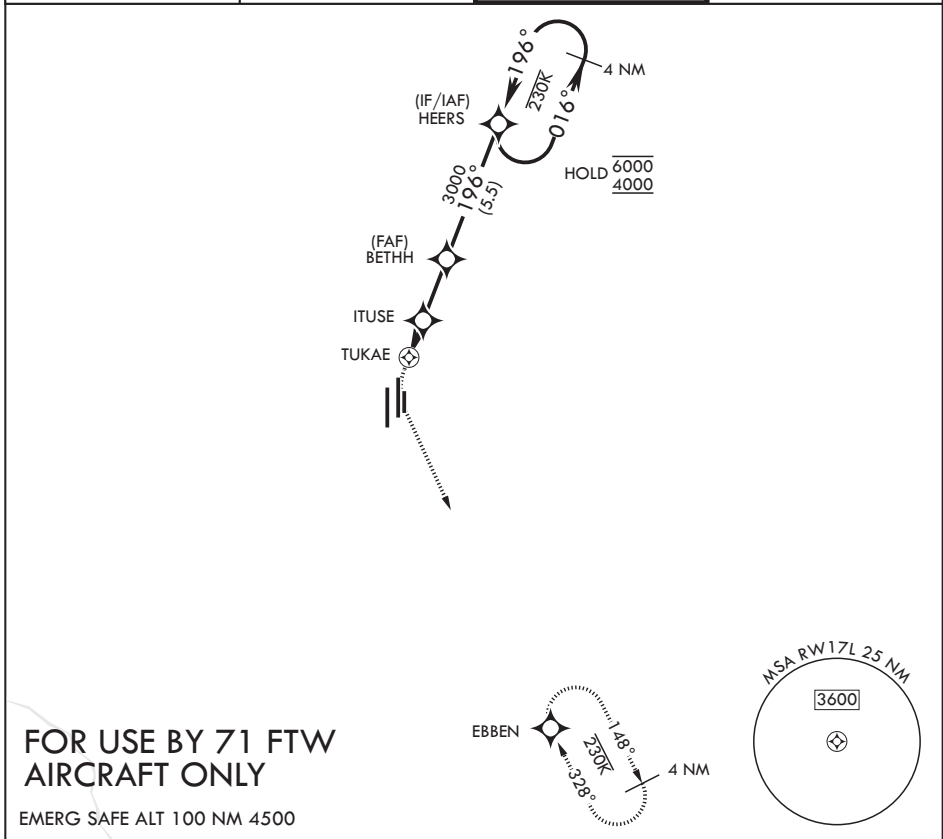
APCH CRS <b>196°</b>	Rwy Idg <b>5024</b>
	TDZE <b>1282</b>
	Arprt Elev <b>1307</b>

(USAF)

VANCE AFB (KEND)

RNP APCH	MISSED APPROACH: Climb to 1900 then climbing left turn to 4000 direct EBBEN and hold.
----------	---

ATIS★ <b>115.4 263.15</b>	APP CON <b>125.45 343.625 (E)</b> <b>126.75 346.325 (W)</b>	TOWER★ <b>124.05 259.1</b>	GND CON <b>121.675 289.4</b>
------------------------------	---	-------------------------------	---------------------------------



1900	4000	EBBEN	HEERS 4 NM Holding Pattern				ELEV 1307	TDZE 1282
<p>1.3    1.5 NM    2.5 NM</p>			<p>3000 2200 ≤ 2.99° TCH 54</p>				<p>17L 5024 x 150 35R 35C 35L</p>	
CATEGORY	A		B		C	D	HIRL Rwys 17C-35C and 17R-35L	
LNAV MDA	1720-1½		438 (500-1½)		NA		MIRL Rwy 17L-35R	
CIRCLING	1760-1½		453 (500-1½)		NA		REL Rwys 17L and 35R	

ENID, OKLAHOMA

36°20'N - 97°55'W

VANCE AFB (KEND)

Orig 24MAR22

# RNAV (GPS) RWY 17L

SC-1, 11 JUN 2026 to 09 JUL 2026

SC-1, 11 JUN 2026 to 09 JUL 2026