

RNAV (GPS) Y RWY 17R

APCH CRS	Rwy Idg	9217
163°	TDZE	1287
	Arpt Elev	1307

[USAF]

VANCE AFB (KEND)

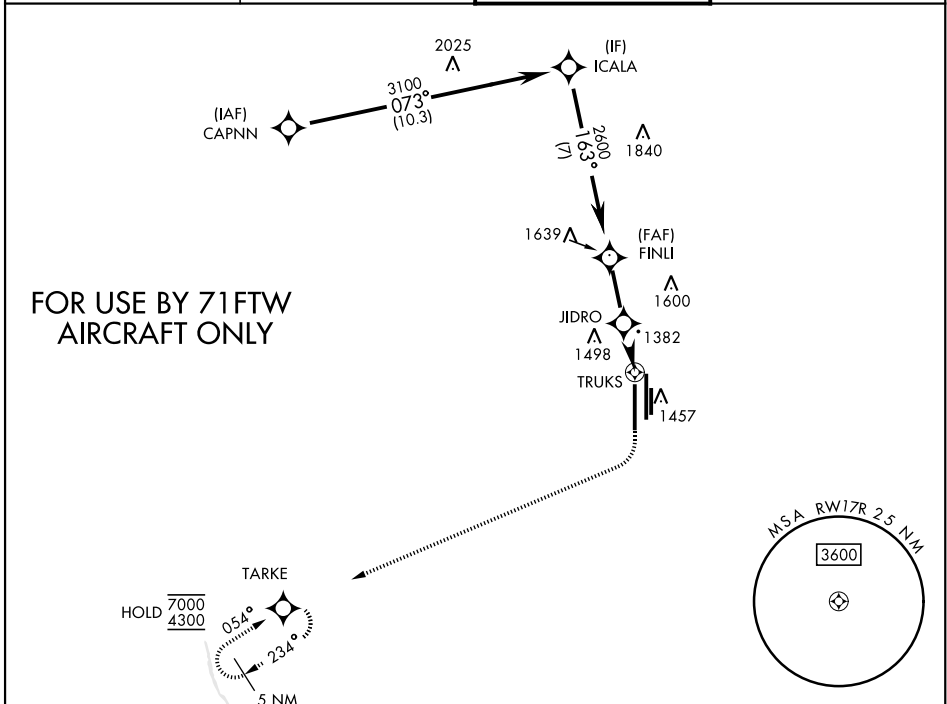
RNP APCH - GPS	SALS
RADAR required	(A2)
* When ALS inop, increase vis to 1 mile. Circling visibility reduction by helicopters not authorized.	

MISSED APPROACH: Climb to 1900, then climbing right turn to 4300 direct TARKE and hold.

ATIS ★	APP CON
115.4 263.15	125.45 343.625 (E) 126.75 346.325 (W)

TOWER ★
124.05 259.1

GND CON
121.675 289.4

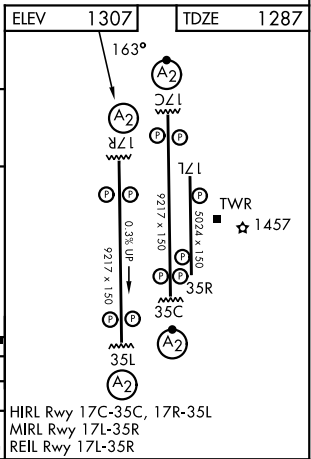
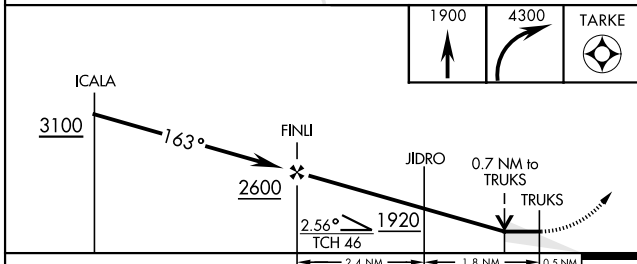


FOR USE BY 71FTW AIRCRAFT ONLY

SC-1, 11 JUN 2026 to 09 JUL 2026

SC-1, 11 JUN 2026 to 09 JUL 2026

ELEV	1307	TDZE	1287
------	------	------	------



CATEGORY	A	B	C	D	E
LNAV MDA*	1640- $\frac{3}{4}$ 353 (400- $\frac{3}{4}$)				
CIRCLING	1760-1 453 (500-1)	1800-1 $\frac{1}{2}$ 493 (500-1 $\frac{1}{2}$)	1900-2 593 (600-2)	2400-3 1093 (1100-3)	

HIRL Rwy 17C-35C, 17R-35L
 MRL Rwy 17L-35R
 REIL Rwy 17L-35R

RNAV (GPS) Y RWY 17R