

ENID, OKLAHOMA

VOR/DME RWY 17L

VORTAC END 115.4 Chan 101	APCH CRS 196°	Rwy Idg 5024 TDZE 1282 Arpt Elev 1307
---	-------------------------	--

[USAF]

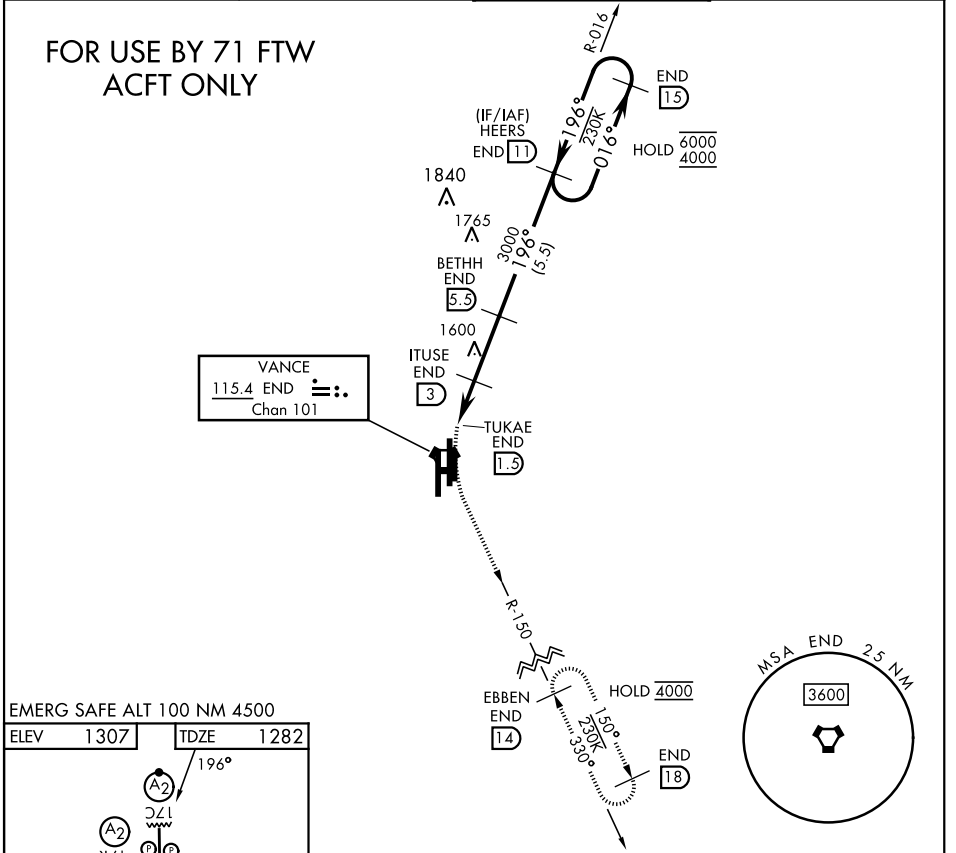
VANCE AFB (KEND)

ATIS ★ 115.4 263.15		APP CON 125.45 343.625 (E) 126.75 346.325 (W)	TOWER ★ 124.05 259.1	GND CON 121.675 289.4
--------------------------------------	--	--	---------------------------------------	--

MISSED APPROACH: Climbing left turn to 4000 on heading 165°, intercept END VORTAC R-150 to EBBEN and hold.

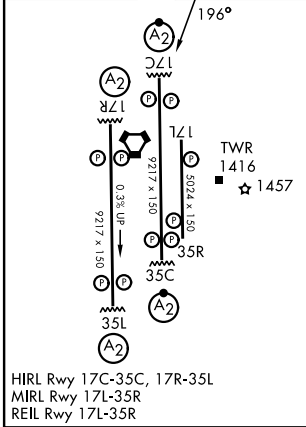
**FOR USE BY 71 FTW
ACFT ONLY**

VANCE
115.4 END
Chan 101



EMERG SAFE ALT 100 NM 4500

ELEV 1307	TDZE 1282
-----------	-----------



4000 hdg 165°	↑ END R-150	EBBEN END 14	VGSi and descent angles not coincident (VGSi Angle 3.00/TCH 54).			
END VORTAC	TUKAE END 1.5	ITUSE END 3	BETHH END 5.3	HEERS END 11	END 15	6000 4000
2200			3000		6000	
1.3			1.5 NM		2.5 NM	
CATEGORY	A	B	C	D		
S-17L	1720-1½	438 (500-1½)	NA			
CIRCLING	1760-1½	453 (500-1½)	NA			

ENID, OKLAHOMA
Orig 24MAR22

36°20'N-97°55'W

VANCE AFB (KEND)

VOR/DME RWY 17L

SC-1, 11 JUN 2026 to 09 JUL 2026

SC-1, 11 JUN 2026 to 09 JUL 2026